

Waterbird population trend analysis of the Mersey Estuary SPA, Mersey Narrows & North Wirral Foreshore pSPA and Ribble & Alt Estuaries SPA

Annex C - Population trends of each waterbird species in each sector of the Liverpool City Region SPAs, and the proportion of the SPA population found in each sector per year:
Part 2 Mersey

First published 27 May 2015

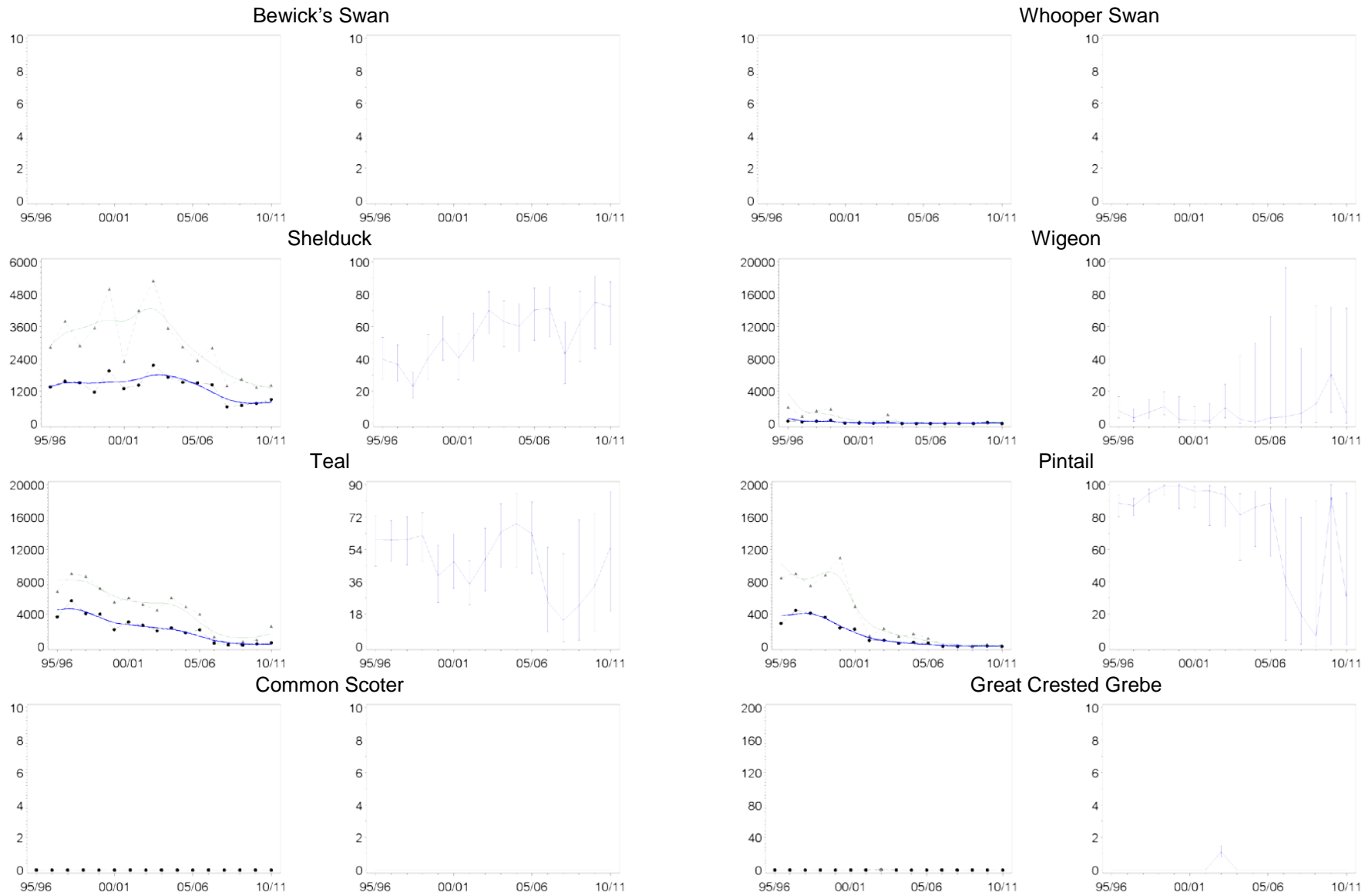


Figure C.45419. Population trends of each waterbird species in sector 45419 (Manisty Bay) (left-hand graphs), and the proportion of the Mersey Estuary SPA population found in this sector per year (right-hand graphs). Blank plots indicate that the species has not been recorded during WeBS counts on the section in question.

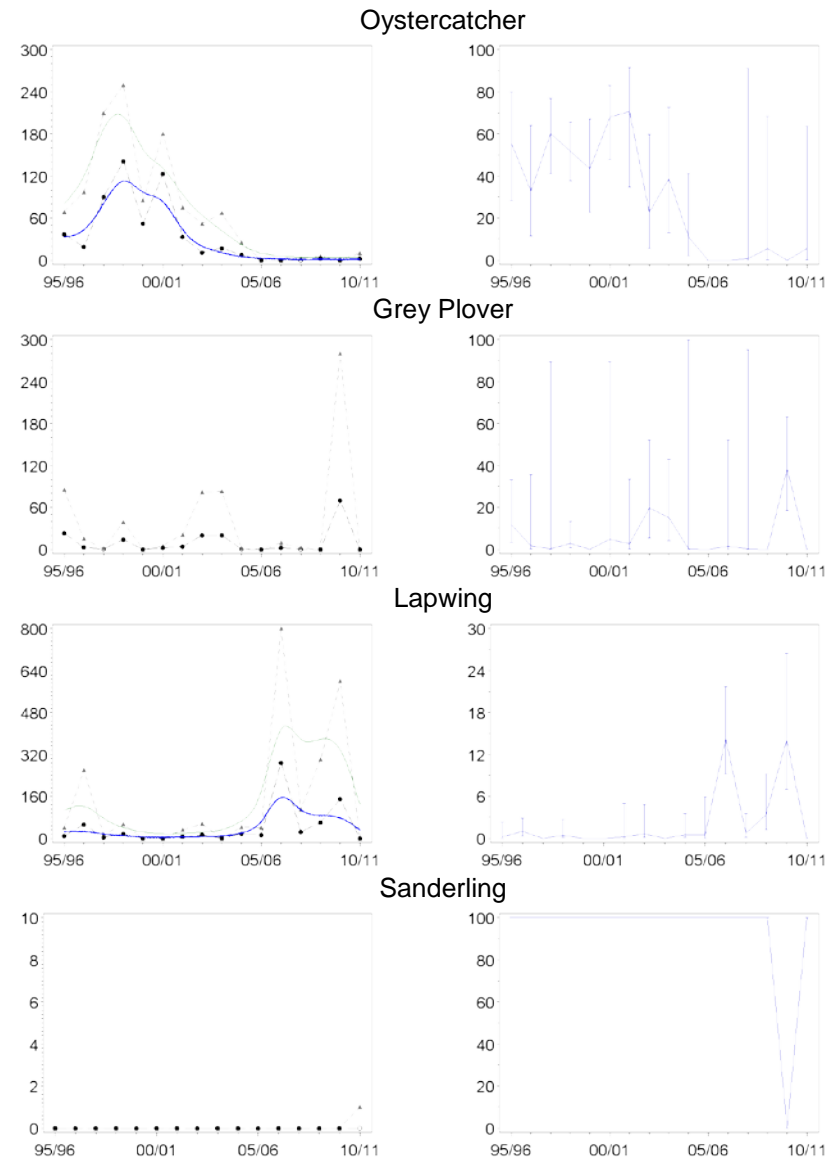
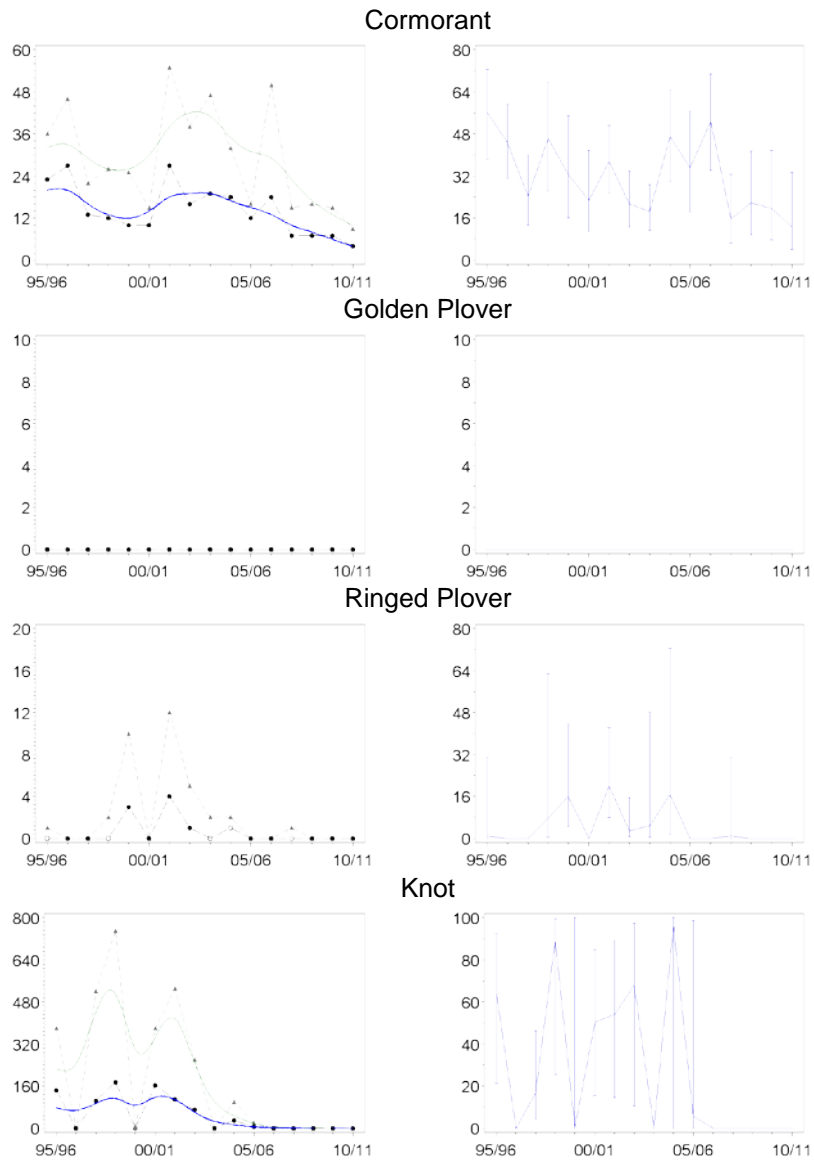


Figure C.45419. Continued

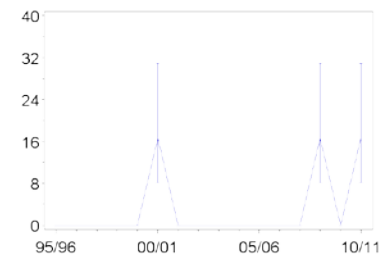
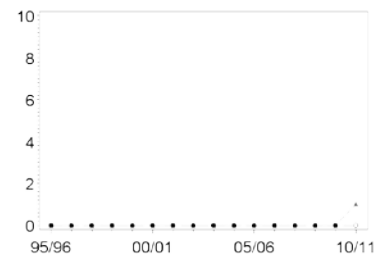
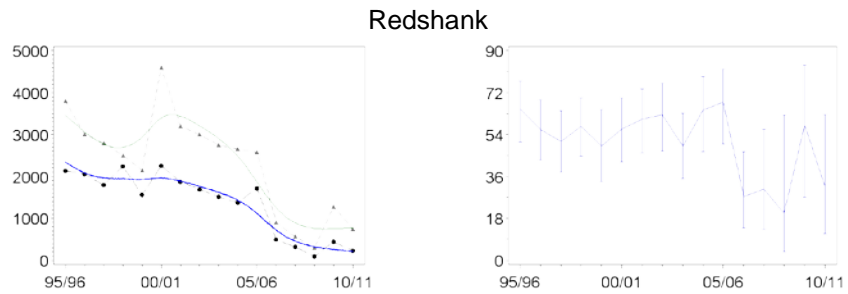
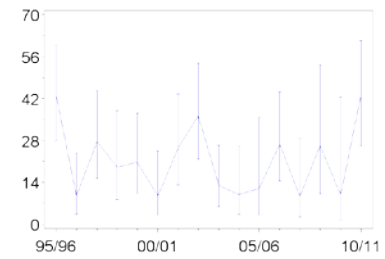
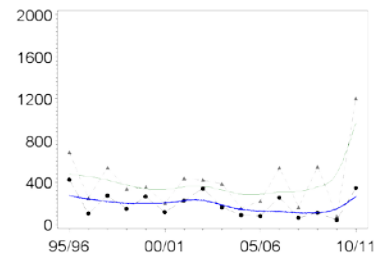
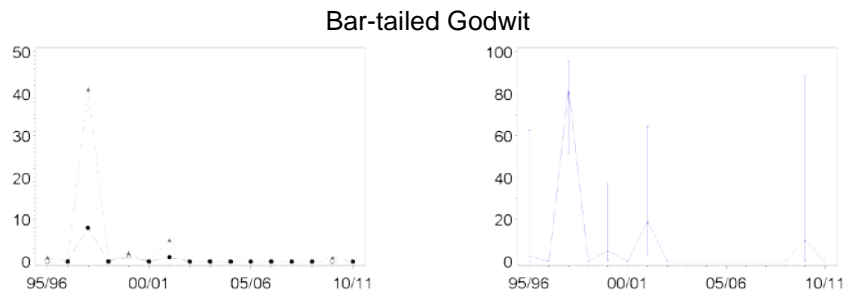
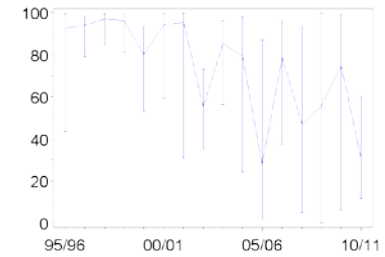
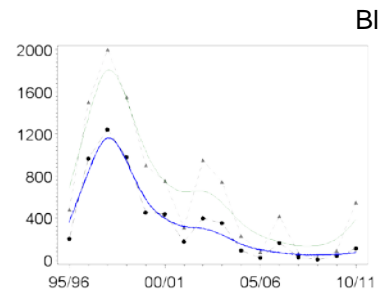
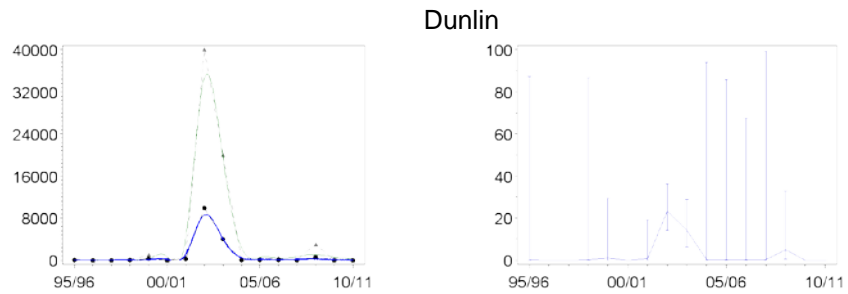


Figure C.45419. Continued

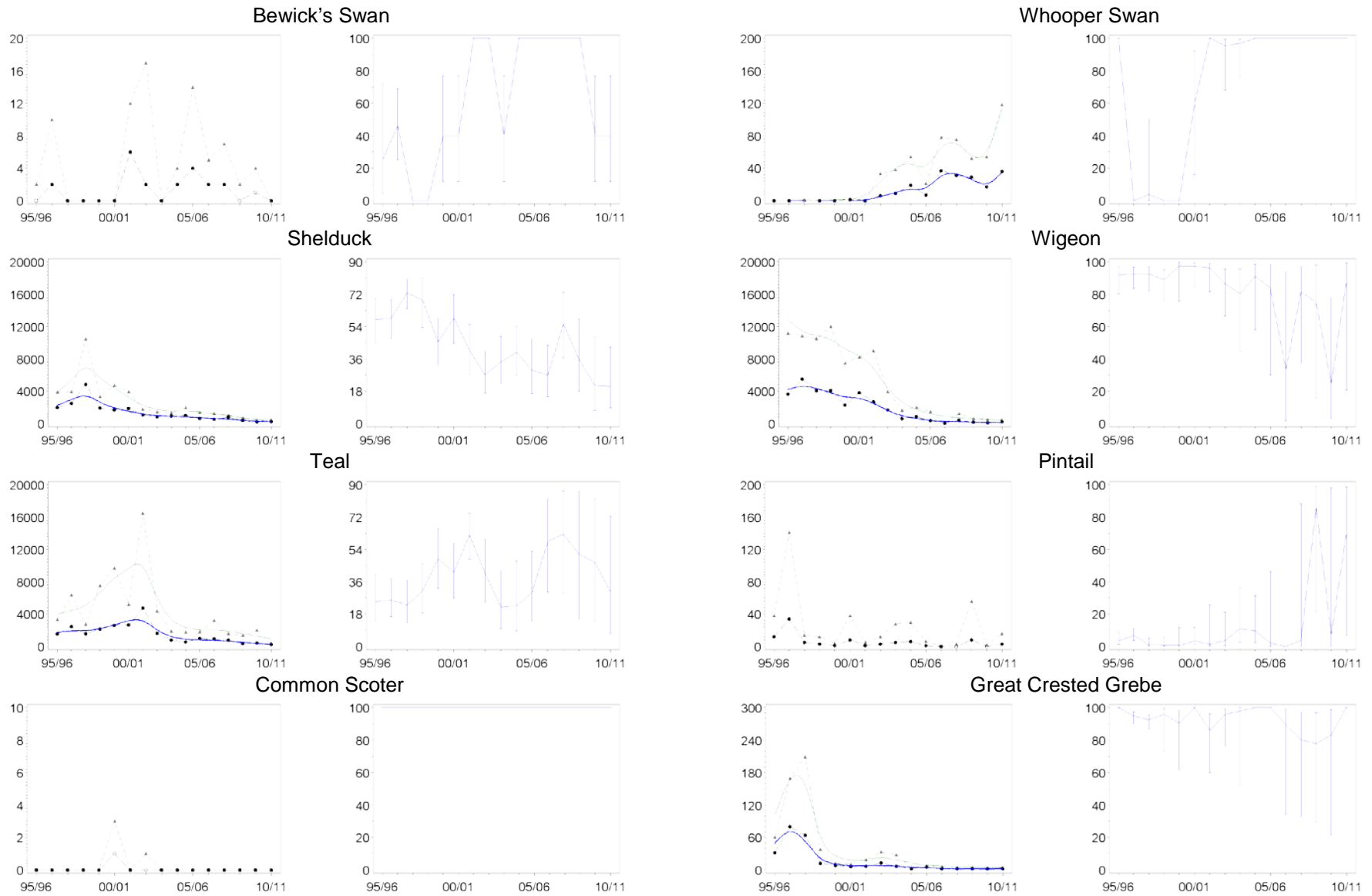


Figure C.45420. Population trends of each waterbird species in sector 45420 (Ince Bank) (left-hand graphs), and the proportion of the Mersey Estuary SPA population found in this sector per year (right-hand graphs). Blank plots indicate that the species has not been recorded during WeBS counts on the section in question.

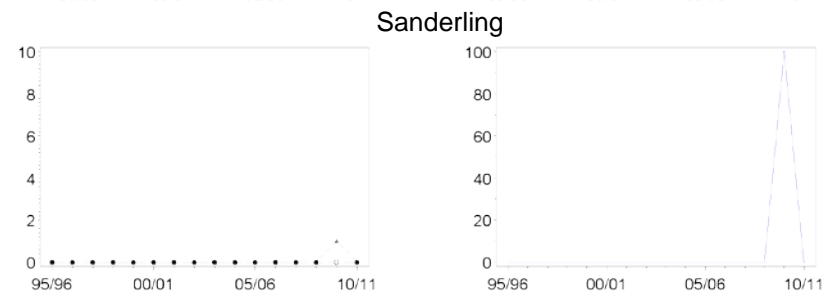
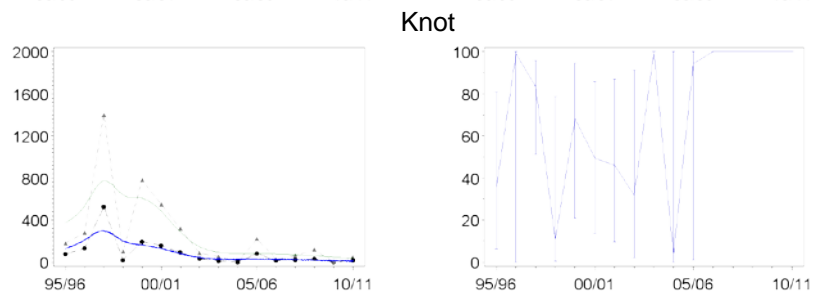
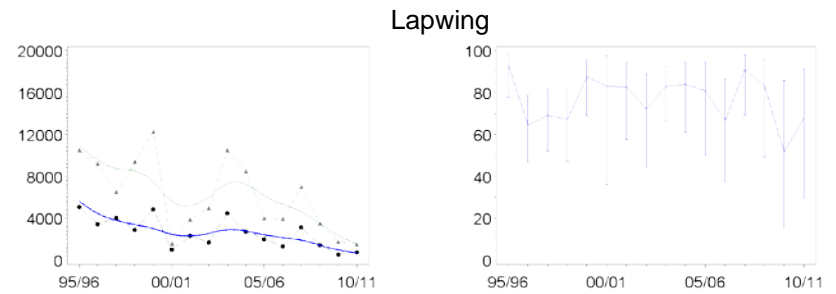
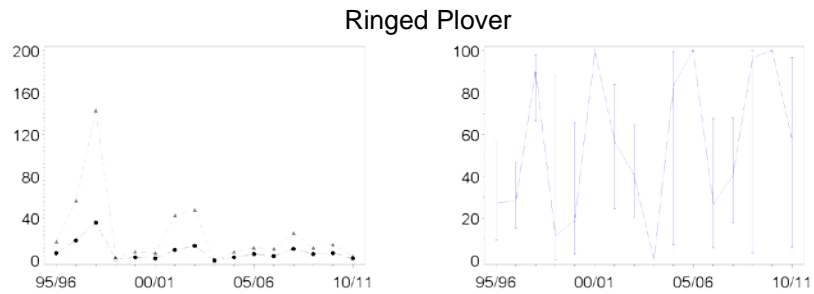
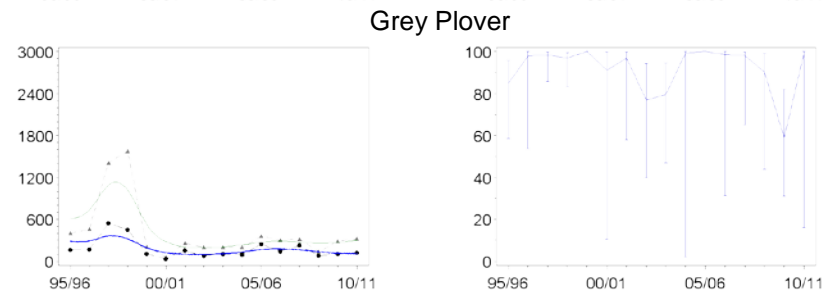
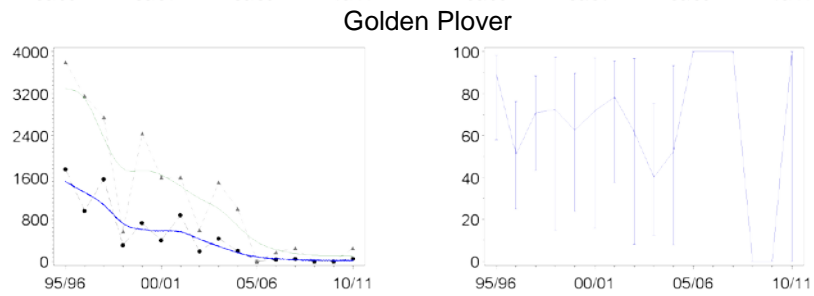
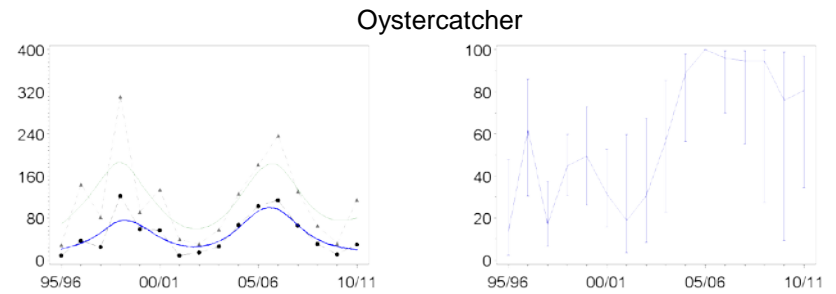
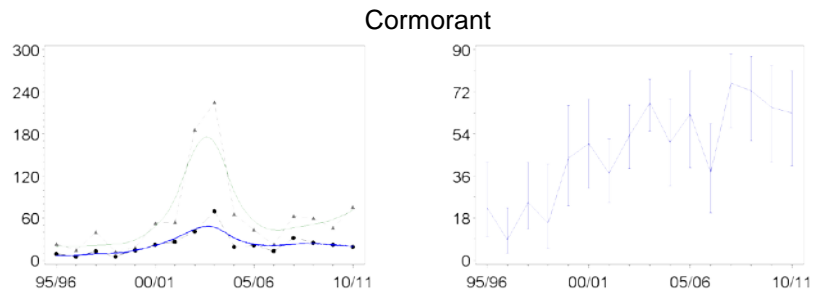


Figure C.45420. Continued

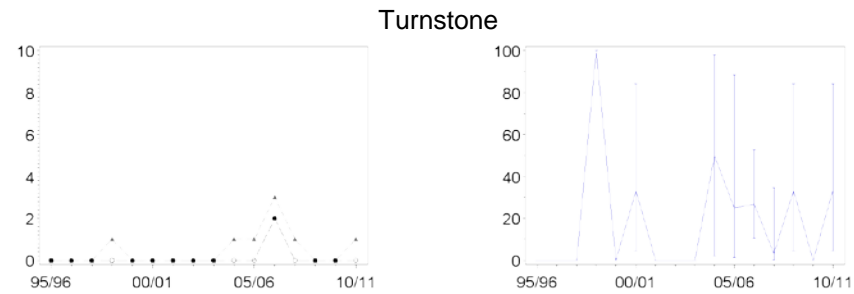
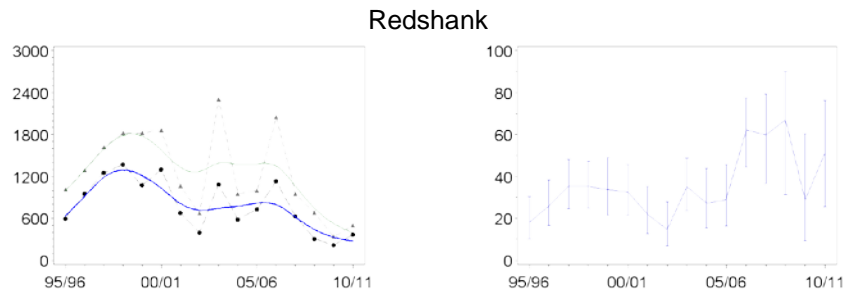
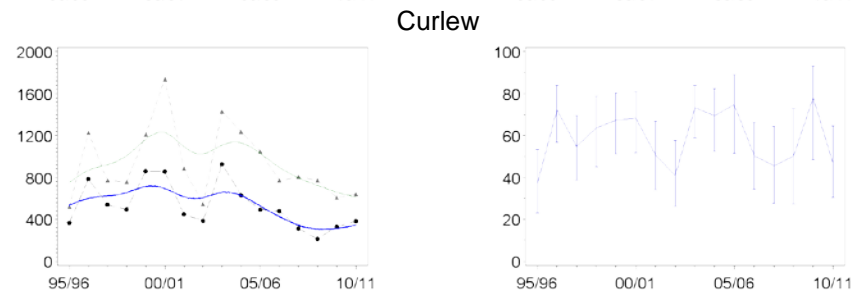
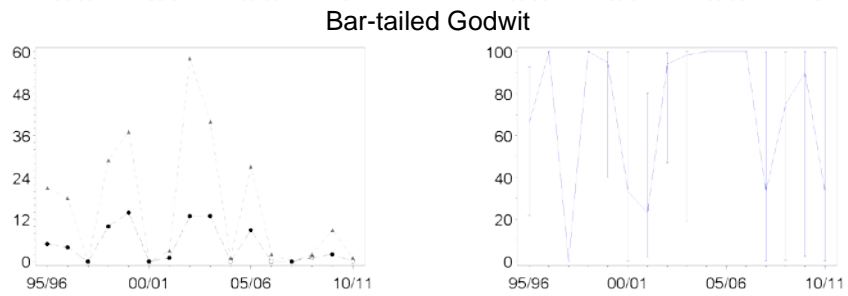
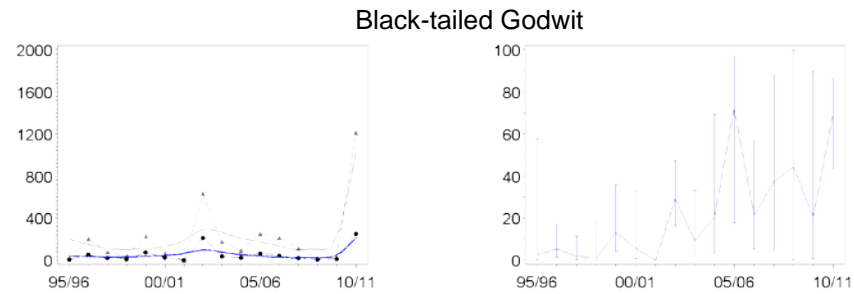
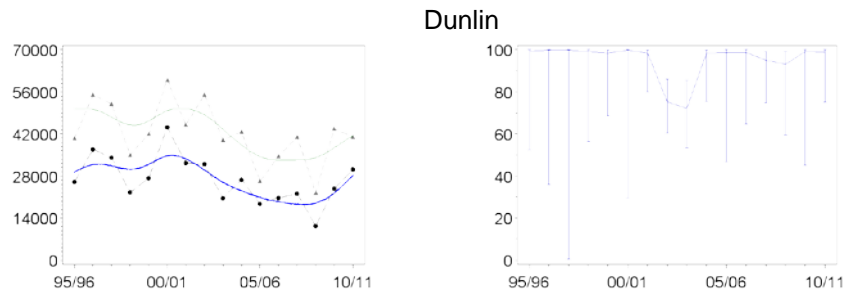


Figure C.45420. Continued

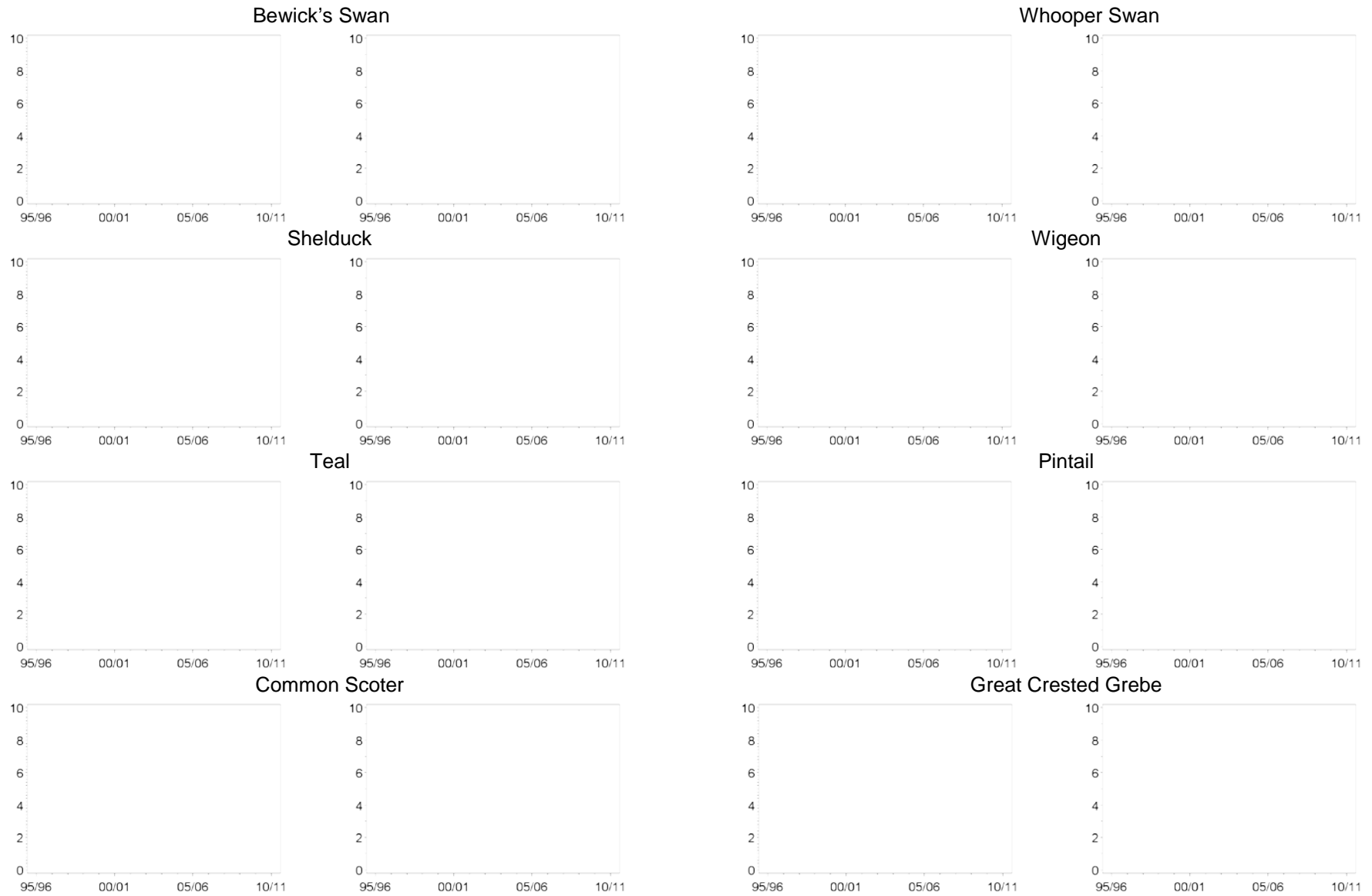


Figure C.45425. Population trends of each waterbird species in sector 45425 (River Mersey Dungeon Banks) (left-hand graphs), and the proportion of the Mersey Estuary SPA population found in this sector per year (right-hand graphs). Blank plots indicate that the species has not been recorded during WeBS counts on the section in question.

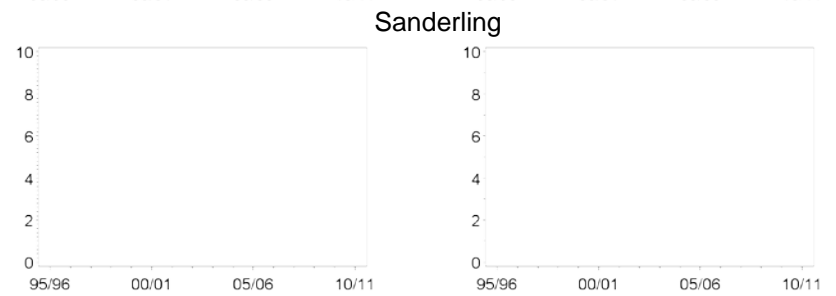
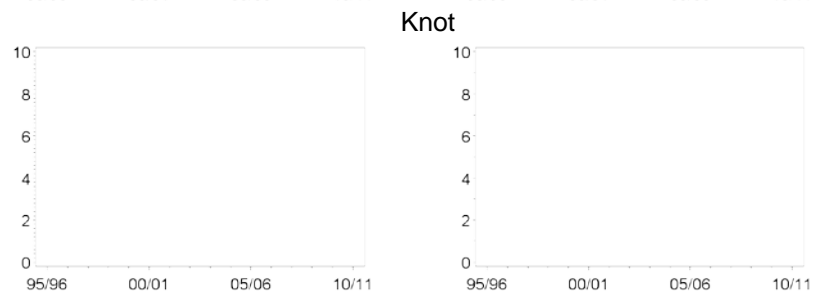
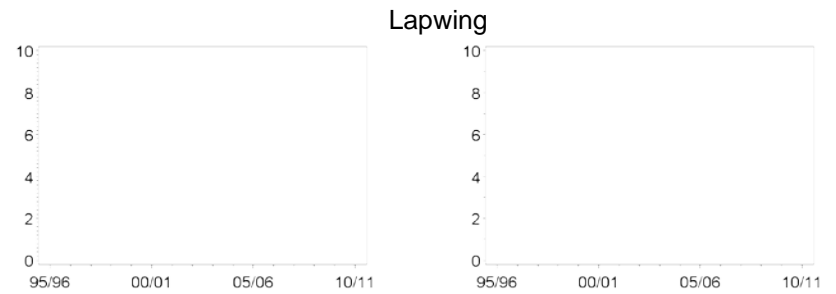
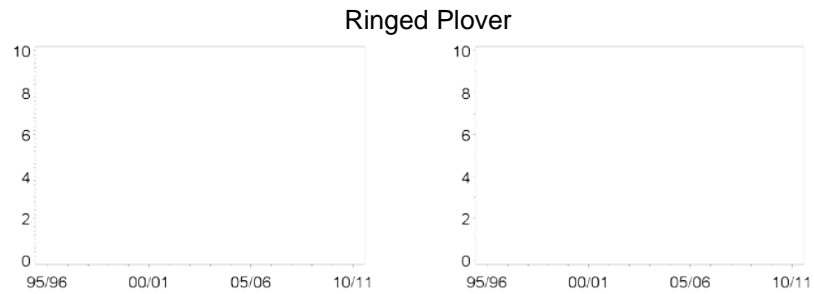
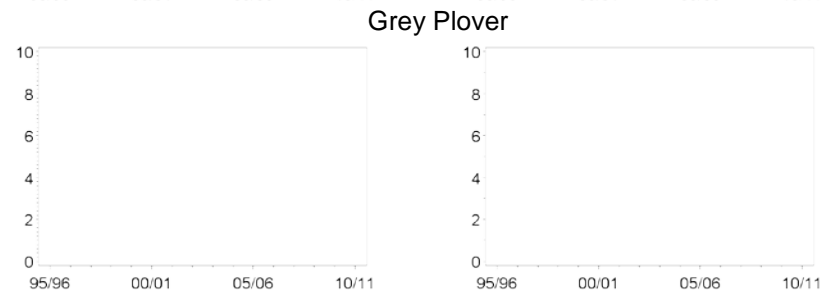
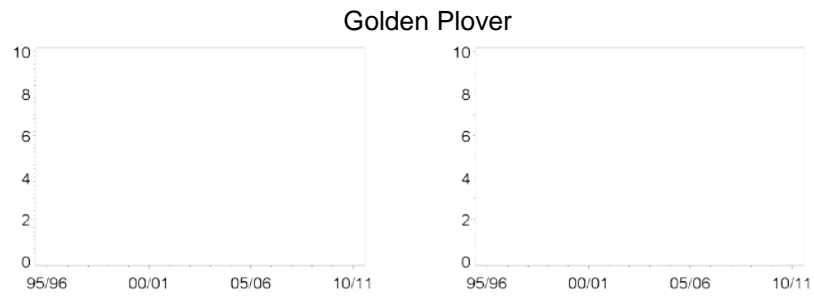
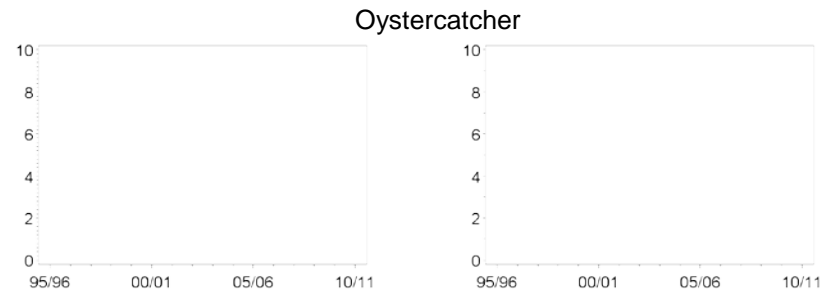
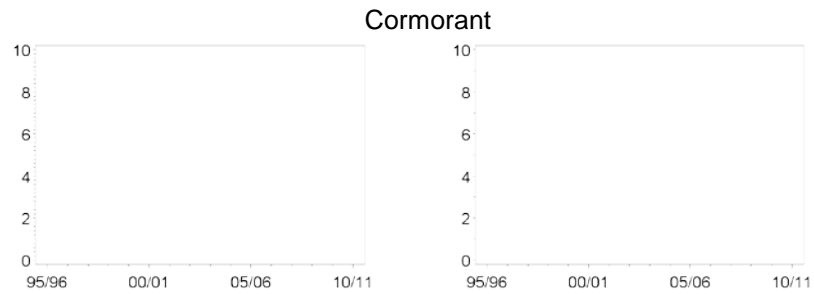


Figure C.45425. Continued

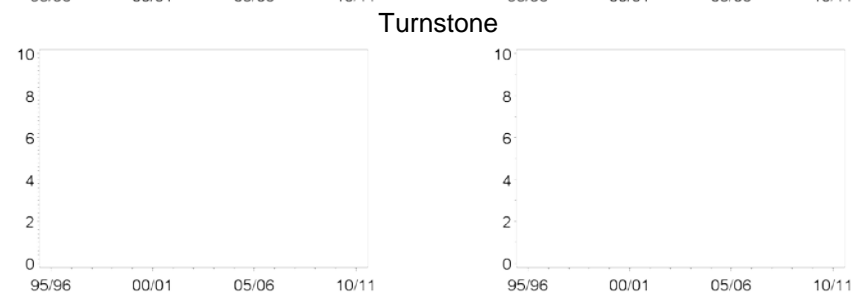
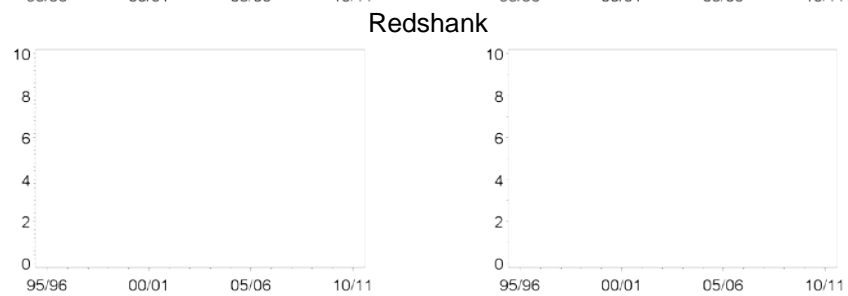
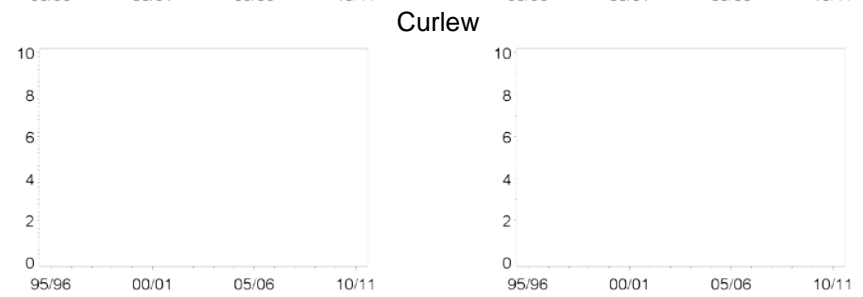
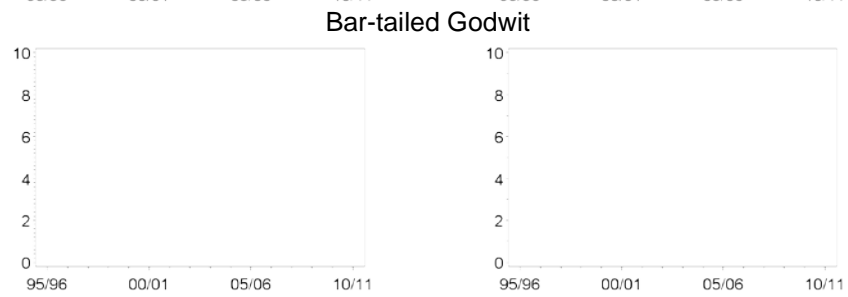
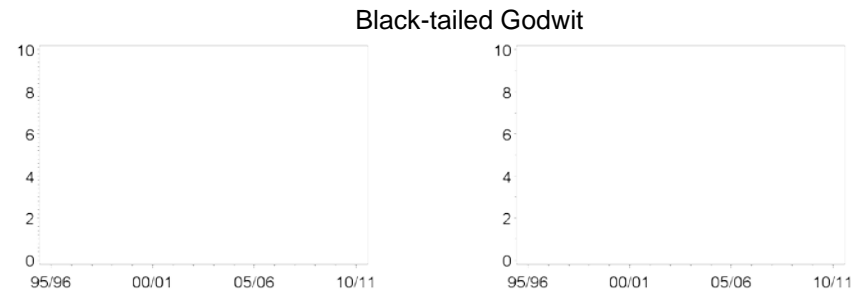
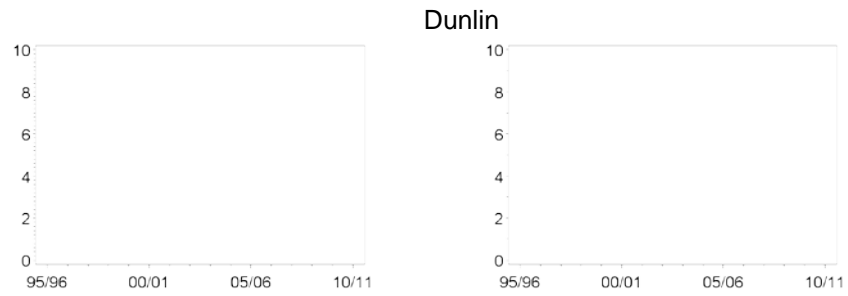


Figure C.45425. Continued

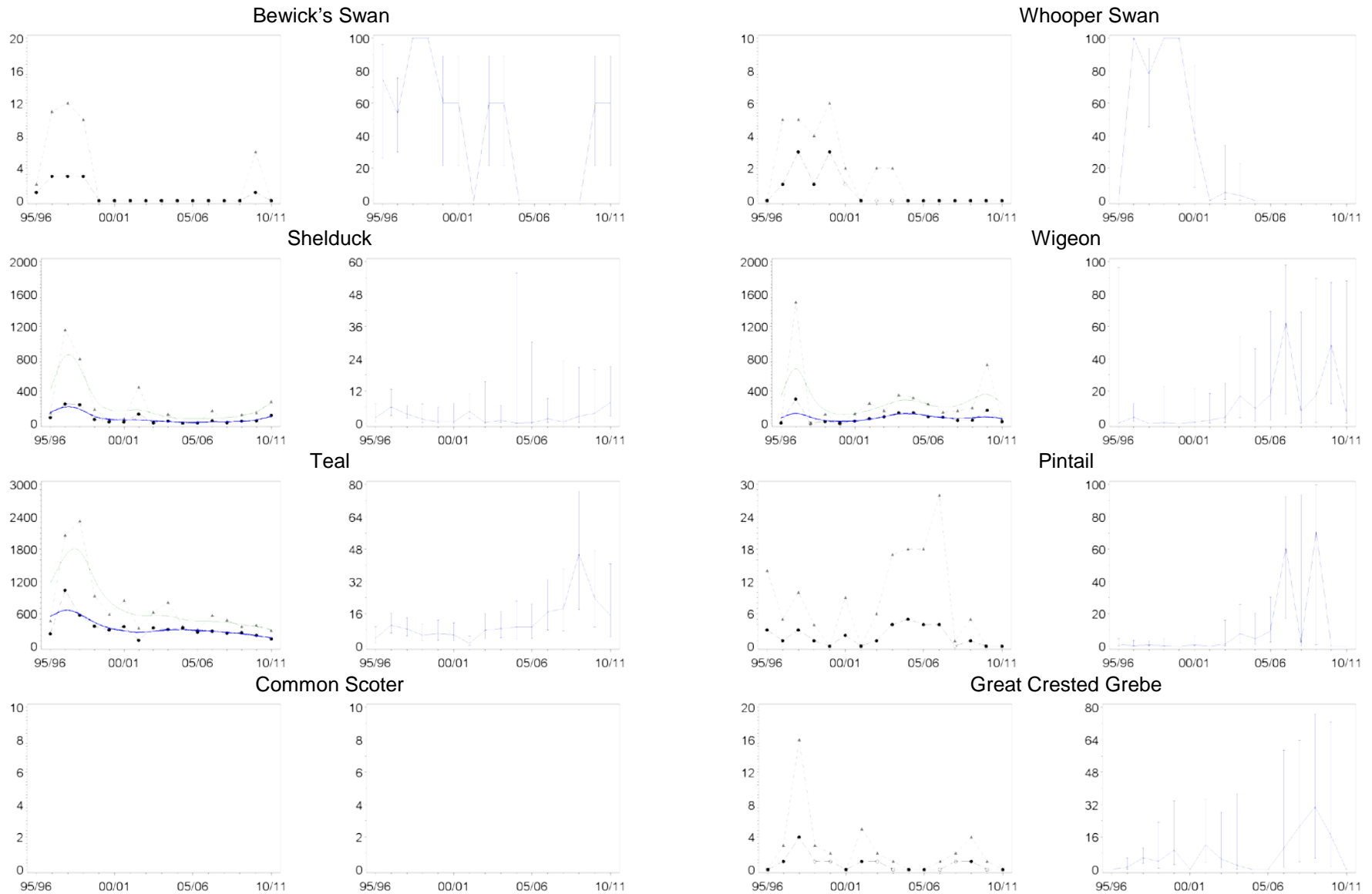


Figure C.46407. Population trends of each waterbird species in sector 46407 (Hale) (left-hand graphs), and the proportion of the Mersey Estuary SPA population found in this sector per year (right-hand graphs). Blank plots indicate that the species has not been recorded during WeBS counts on the section in question.

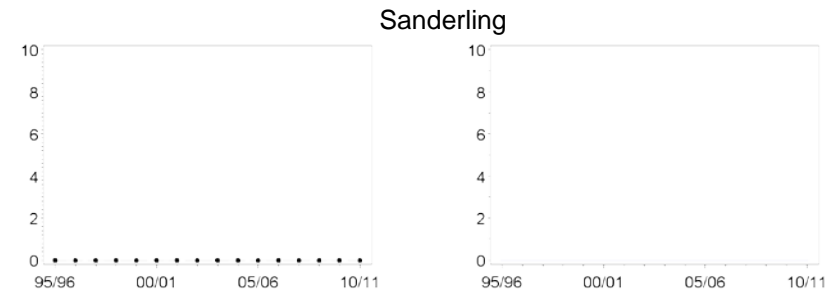
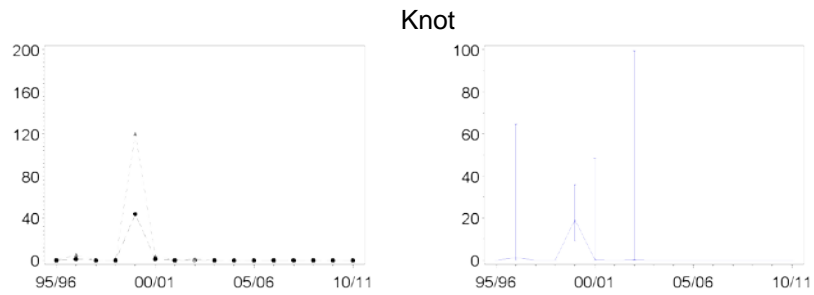
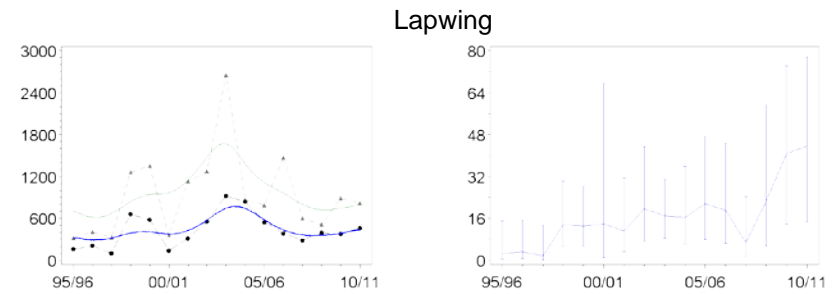
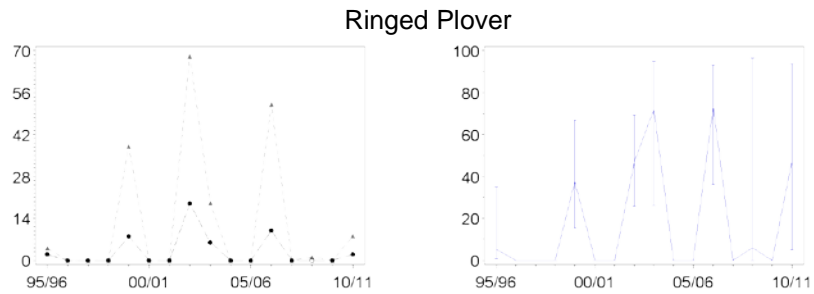
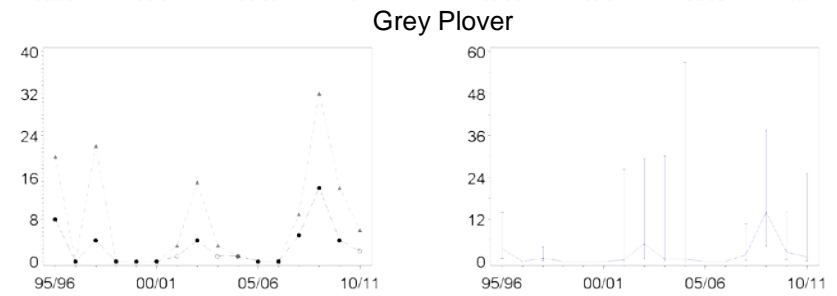
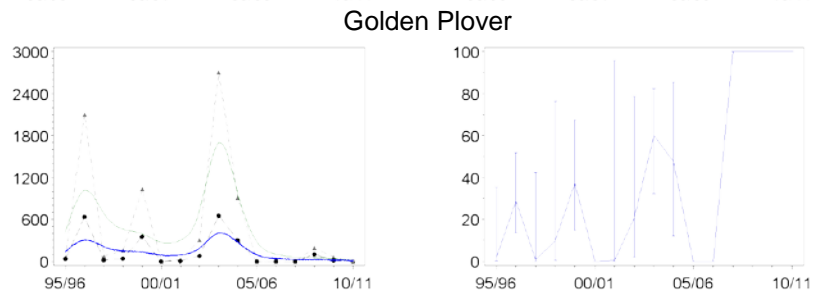
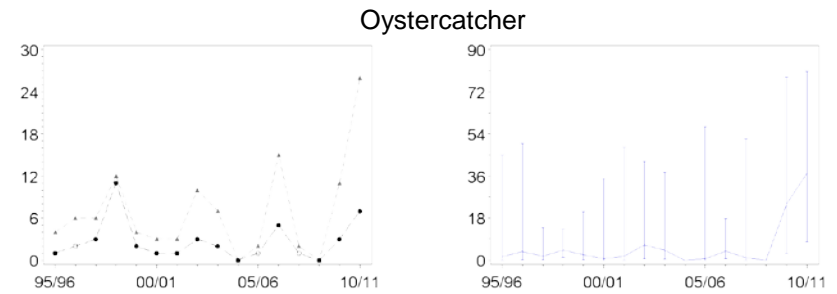
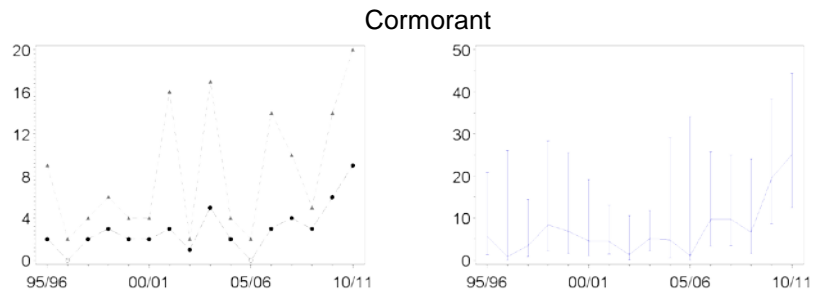


Figure C.46407. Continued

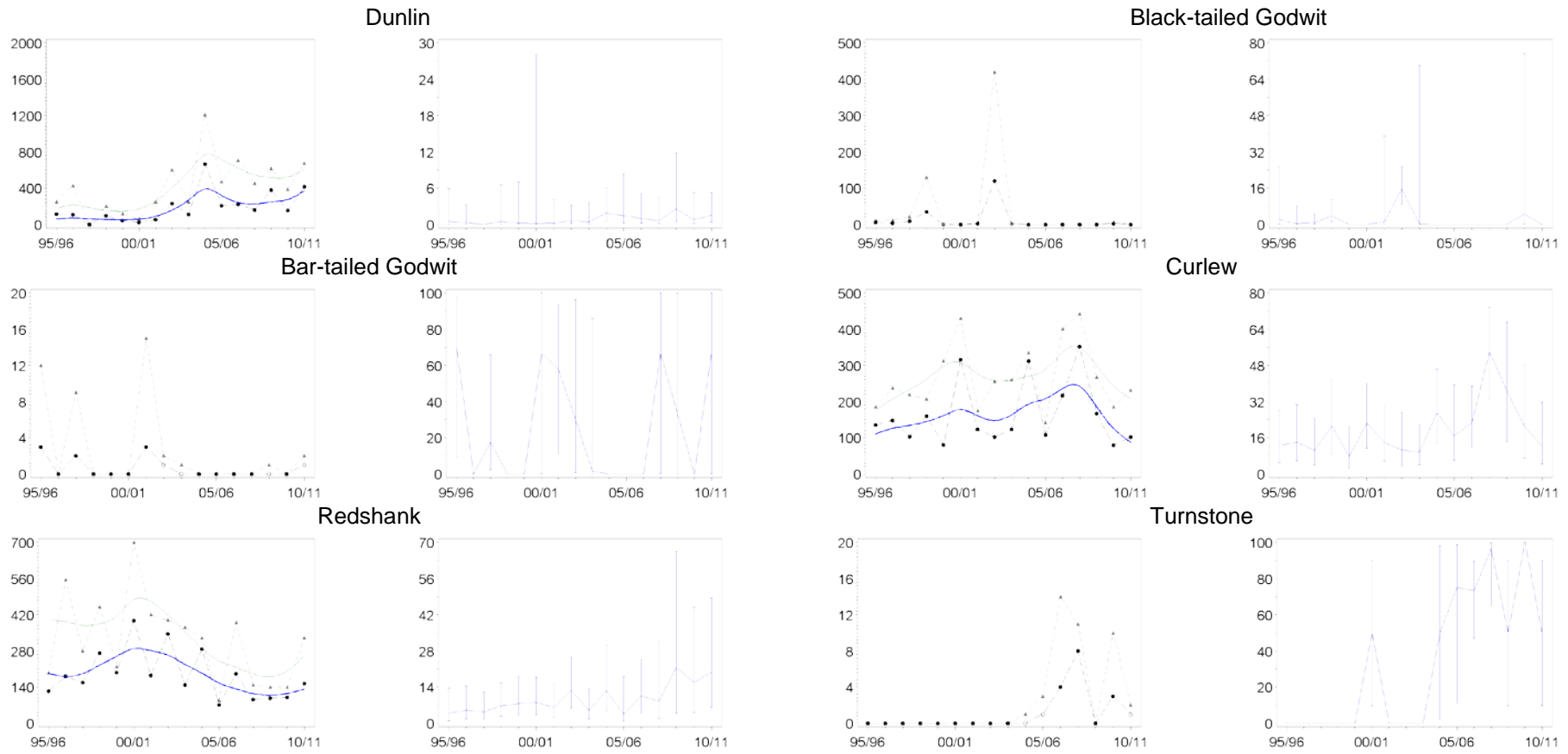


Figure C.46407. Continued

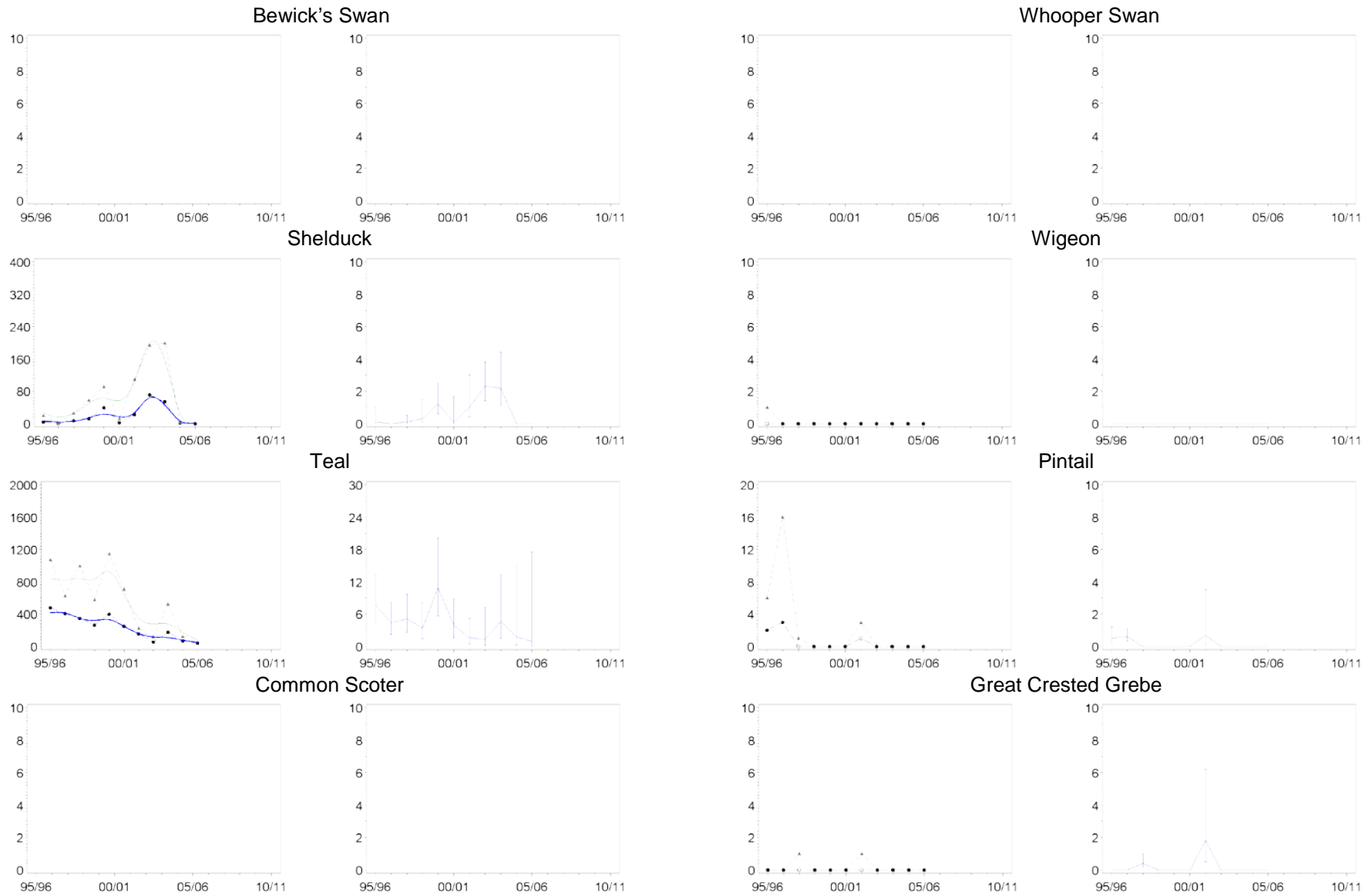


Figure C.46408. Population trends of each waterbird species in sector 46408 (Oglet) (left-hand graphs), and the proportion of the Mersey Estuary SPA population found in this sector per year (right-hand graphs). Blank plots indicate that the species has not been recorded during WeBS counts on the section in question.

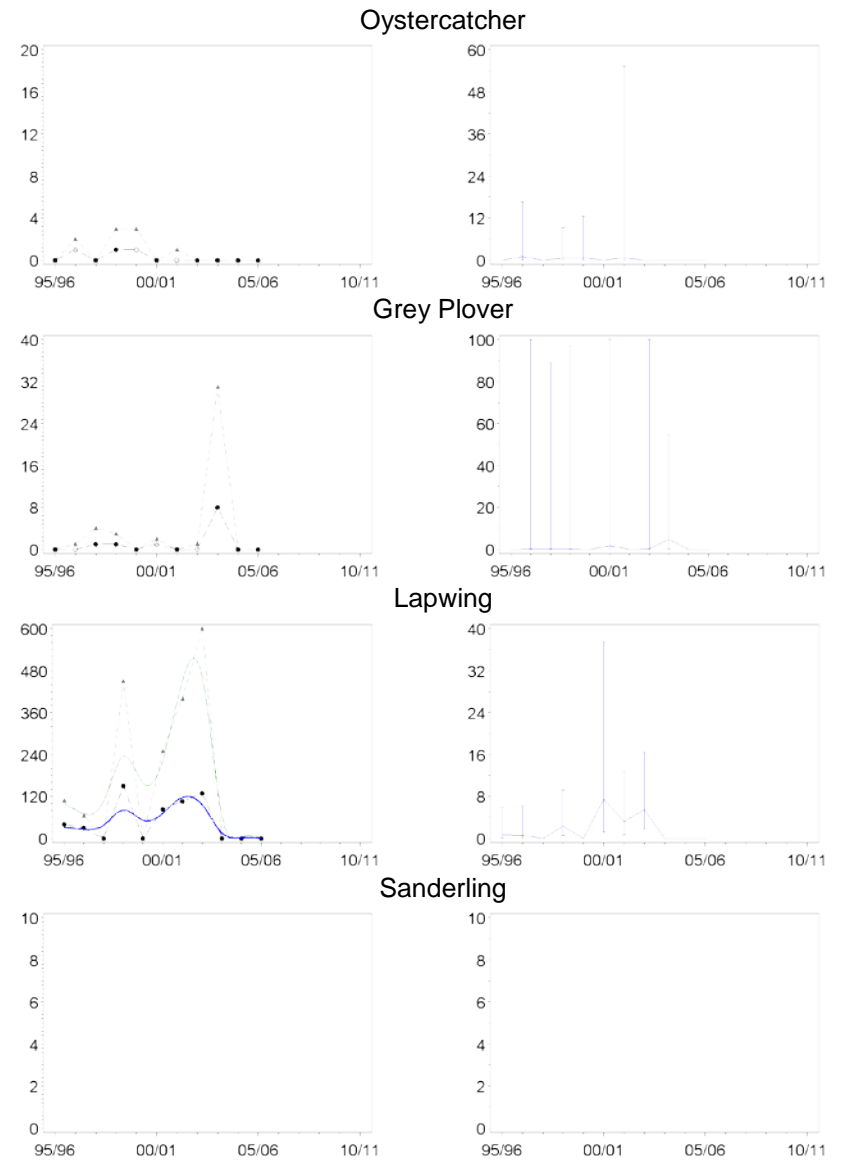
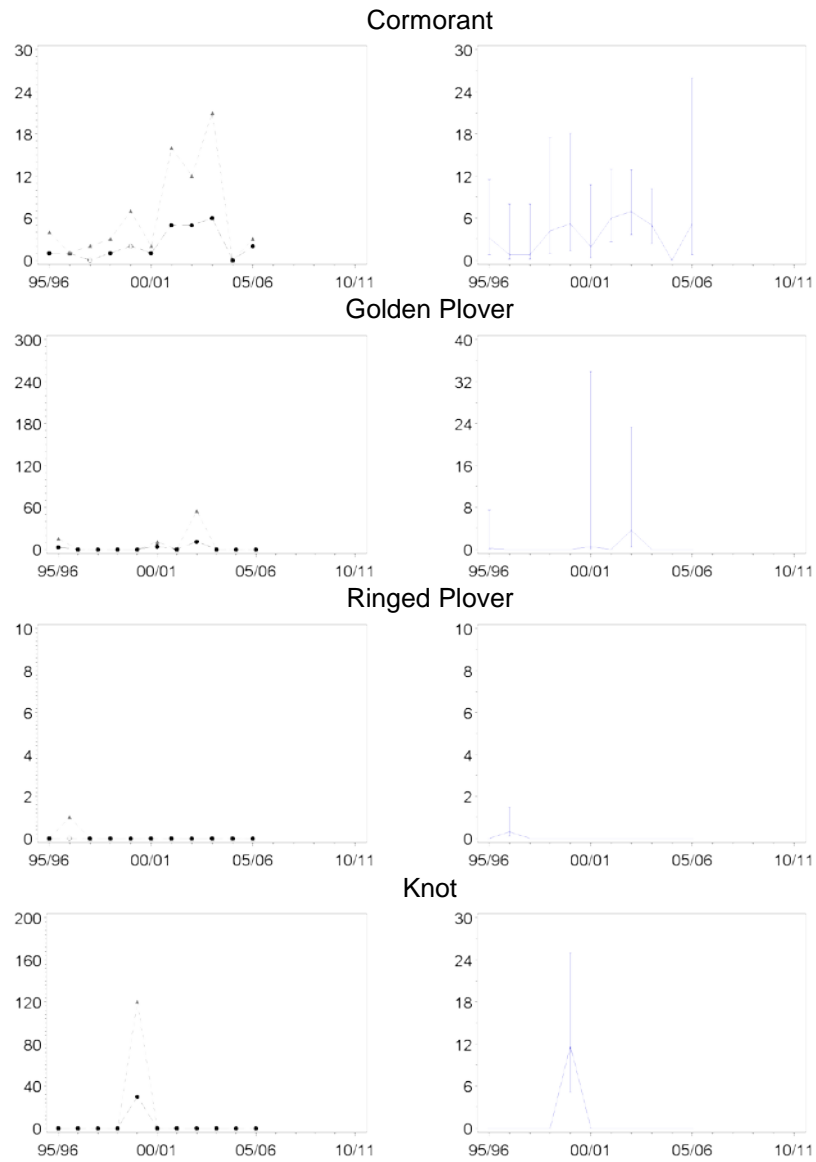


Figure C.46408. Continued

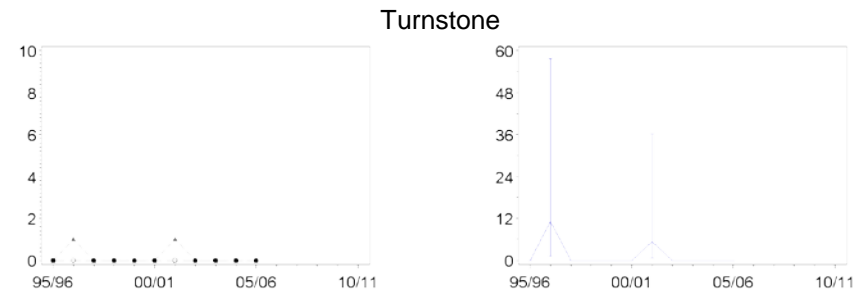
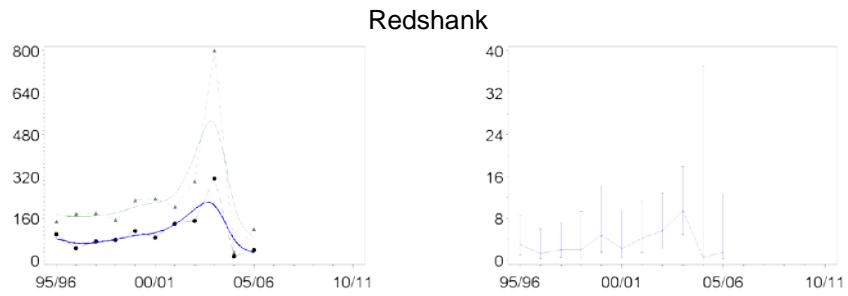
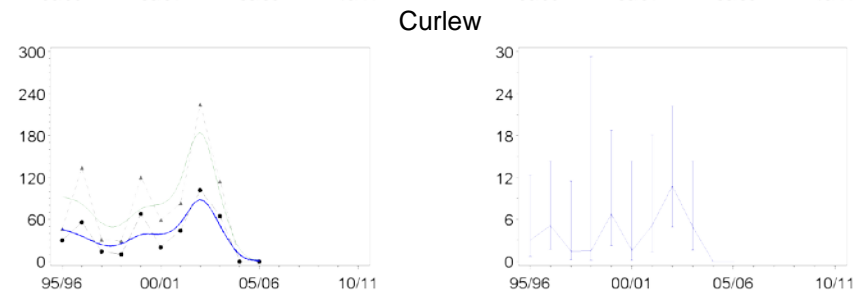
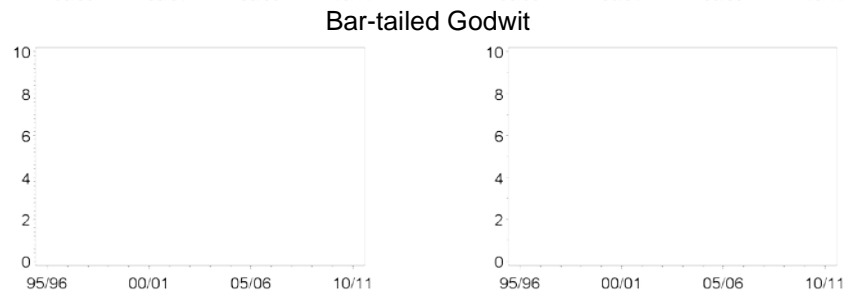
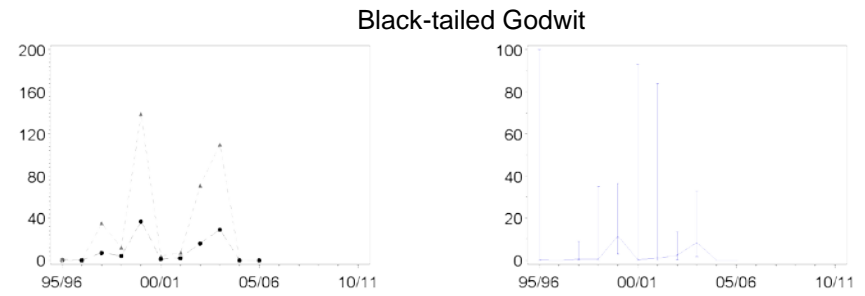
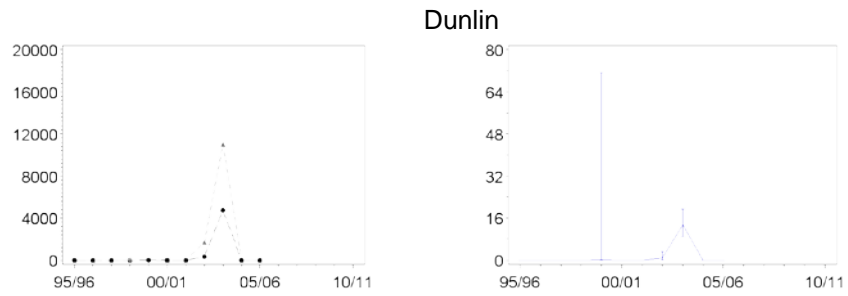


Figure C.46408. Continued

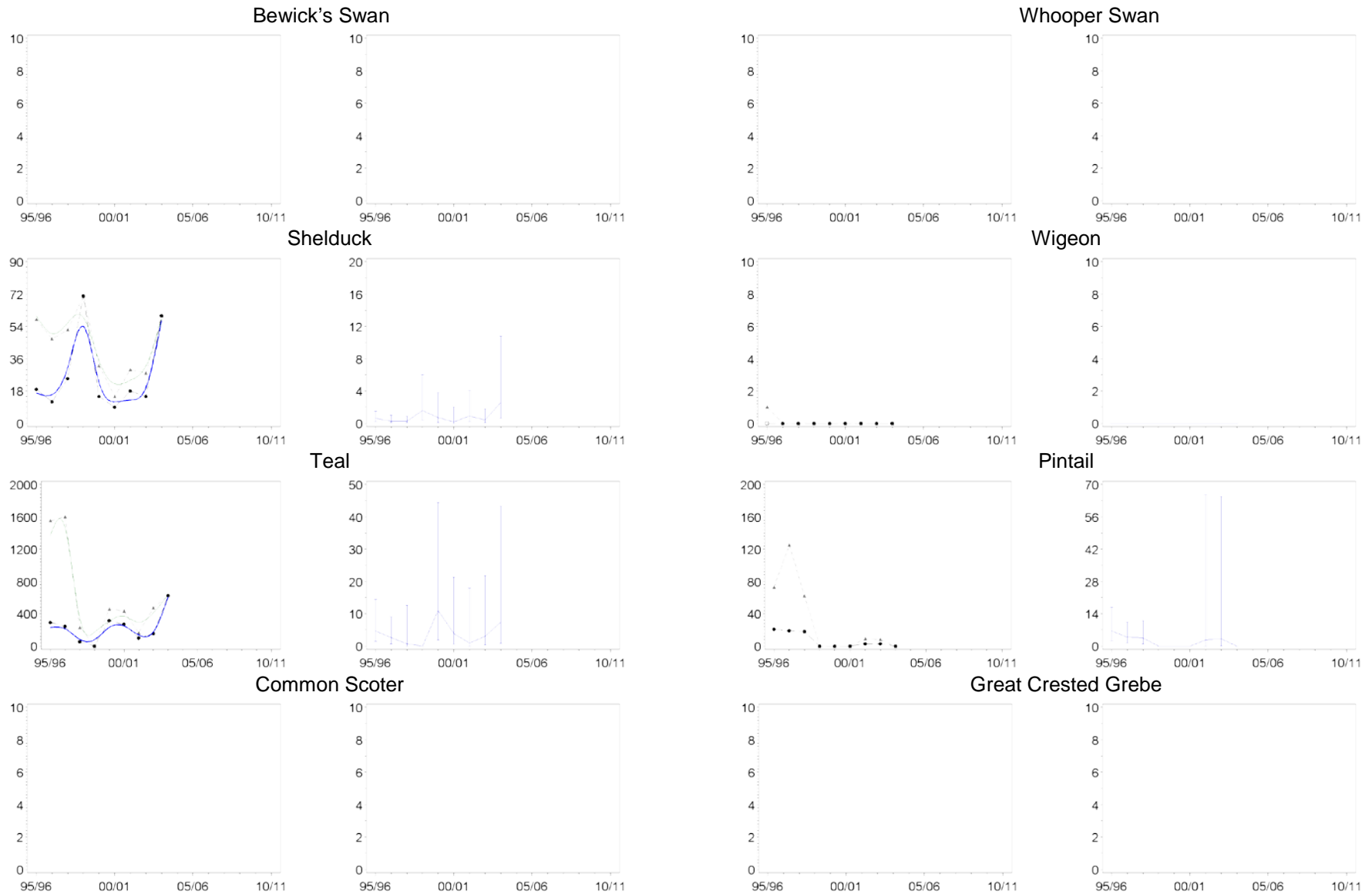


Figure C.46409. Population trends of each waterbird species in sector 46409 (Garston Shore) (left-hand graphs), and the proportion of the Mersey Estuary SPA population found in this sector per year (right-hand graphs). Blank plots indicate that the species has not been recorded during WeBS counts on the section in question.

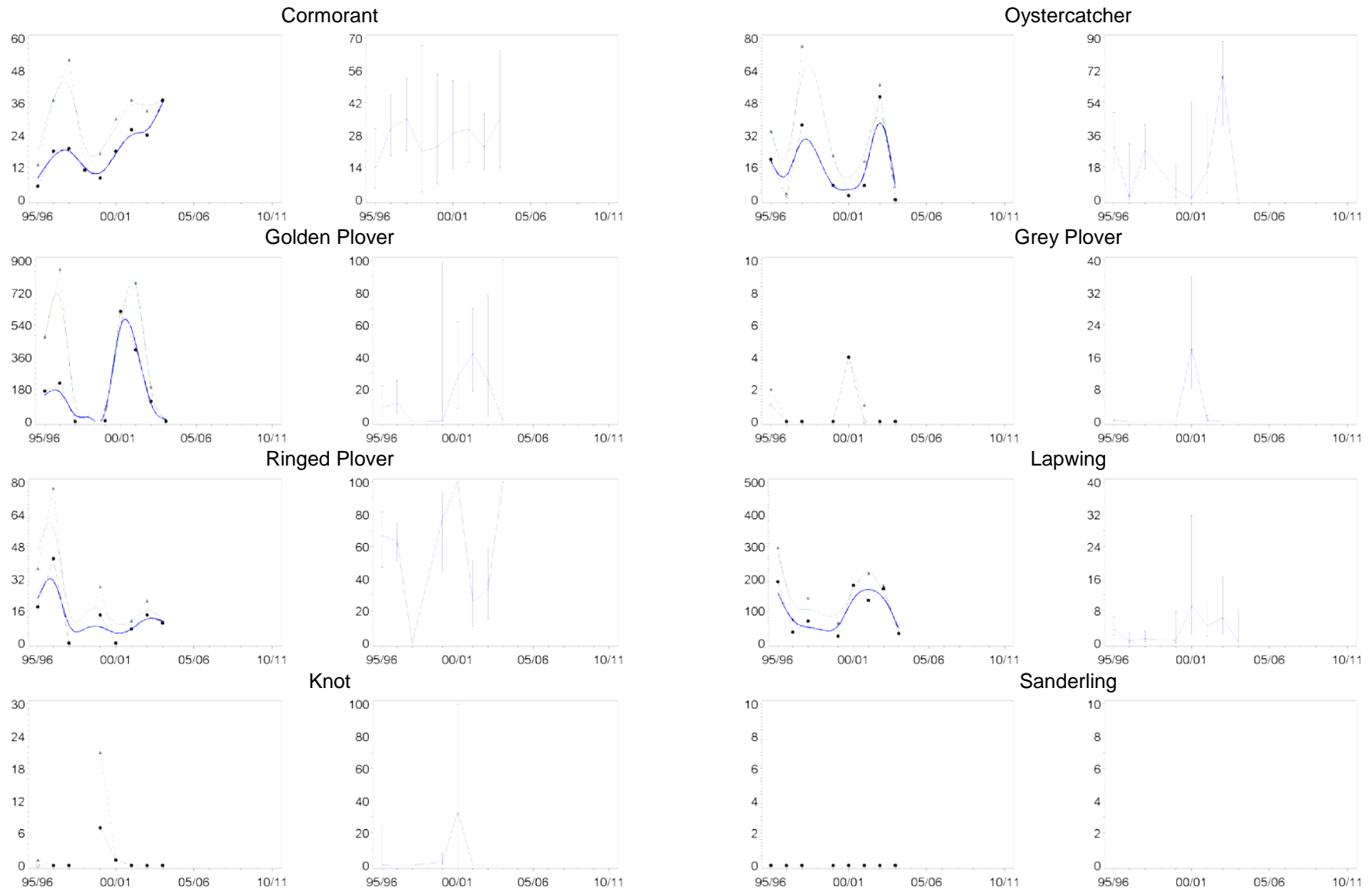


Figure C.46409. Continued

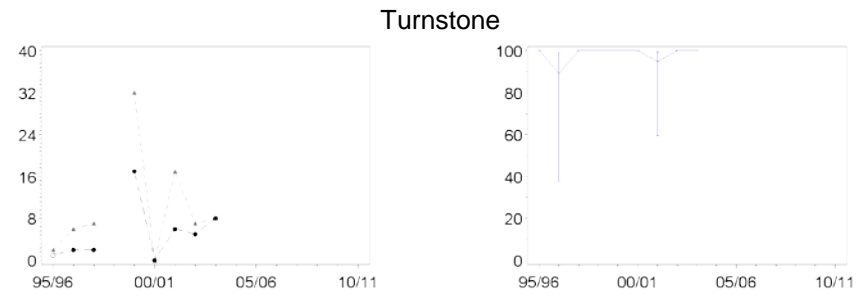
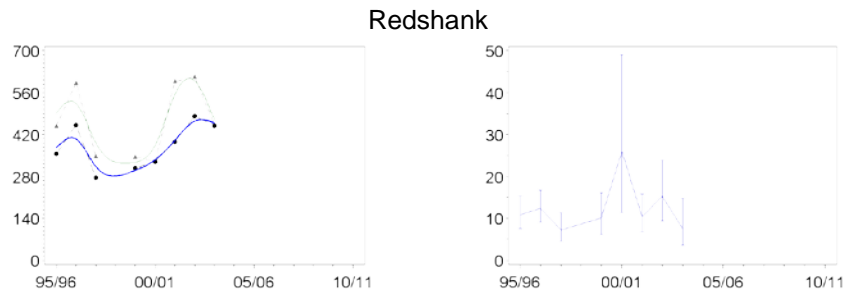
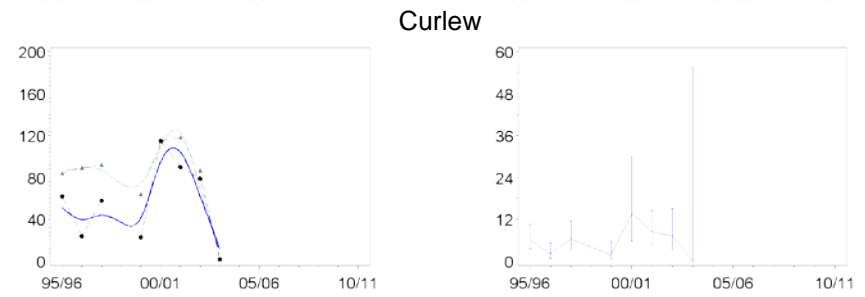
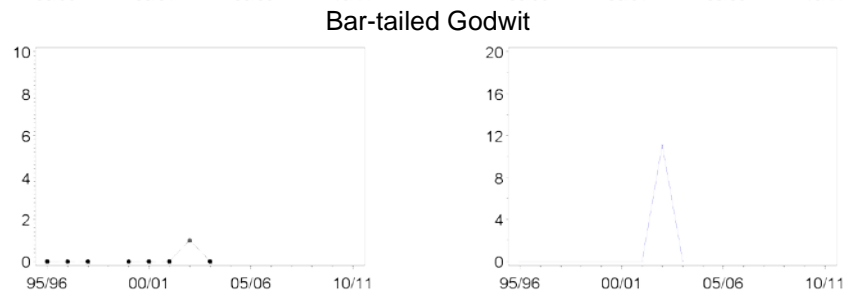
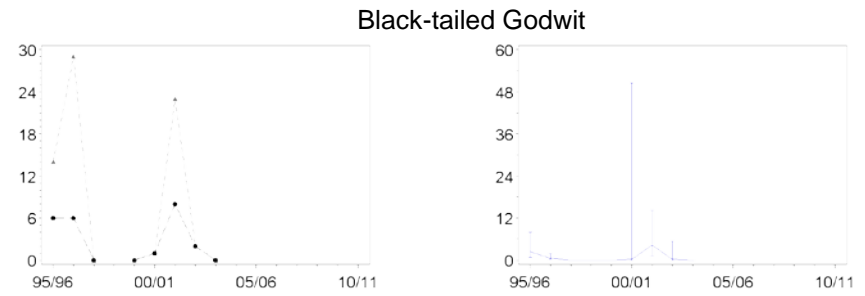
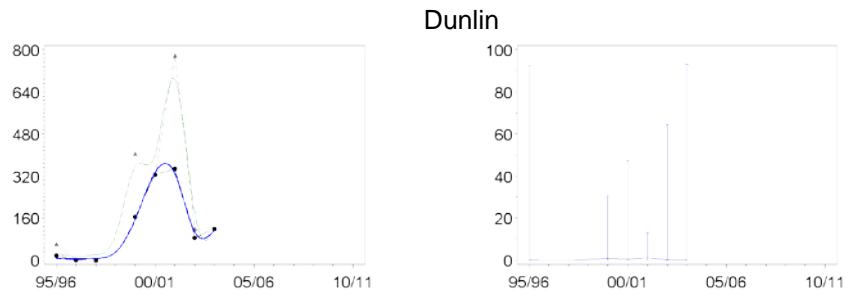


Figure C.46409. Continued