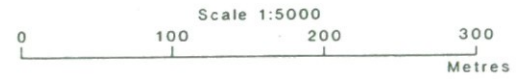
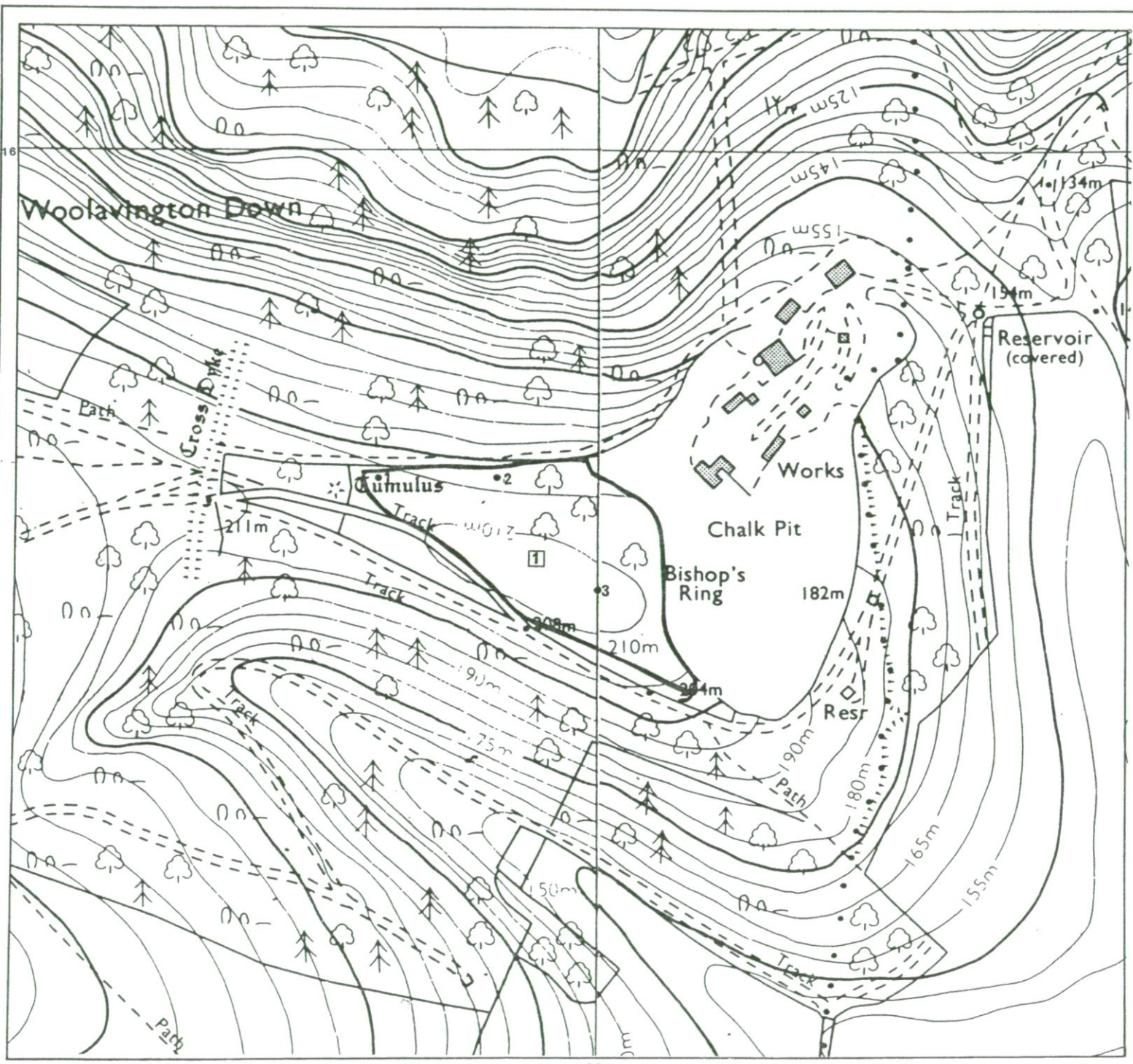




Location of Auger Borings
West Sussex Minerals Local Plan
Site 42: Duncton Quarry

- 5 Auger boring
- ② Profile pit



The information is accurate at the base map scale but any enlargement would be misleading.
 Reproduction in whole or part by any means is prohibited without the prior permission of MAFF.

Surveyed and drawn by the Resource Planning Team, ADAS Statutory Unit, Guildford.
 Based on the 1982 Ordnance Survey 10,000 map with the permission of the Controller of Her Majesty's Stationery Office.
 Source: Map(s) SU 91 NW SU 91 NE
 Reference no. 4203/105/94 EL 42/228 © Crown Copyright Reserved 1994

