

25 FEBRUARY 2015

PRESENTATION BY

Dr. Catrin Ellis Jones
Dialogue by Design

Connecting with people,
places and planning – how
public dialogue can help



www.sciencewise-erc.org.uk



To embed public dialogue into local decision making for the development of integrated biodiversity, landscape and ecosystems policy and practice, within the context of localism and Big Society.

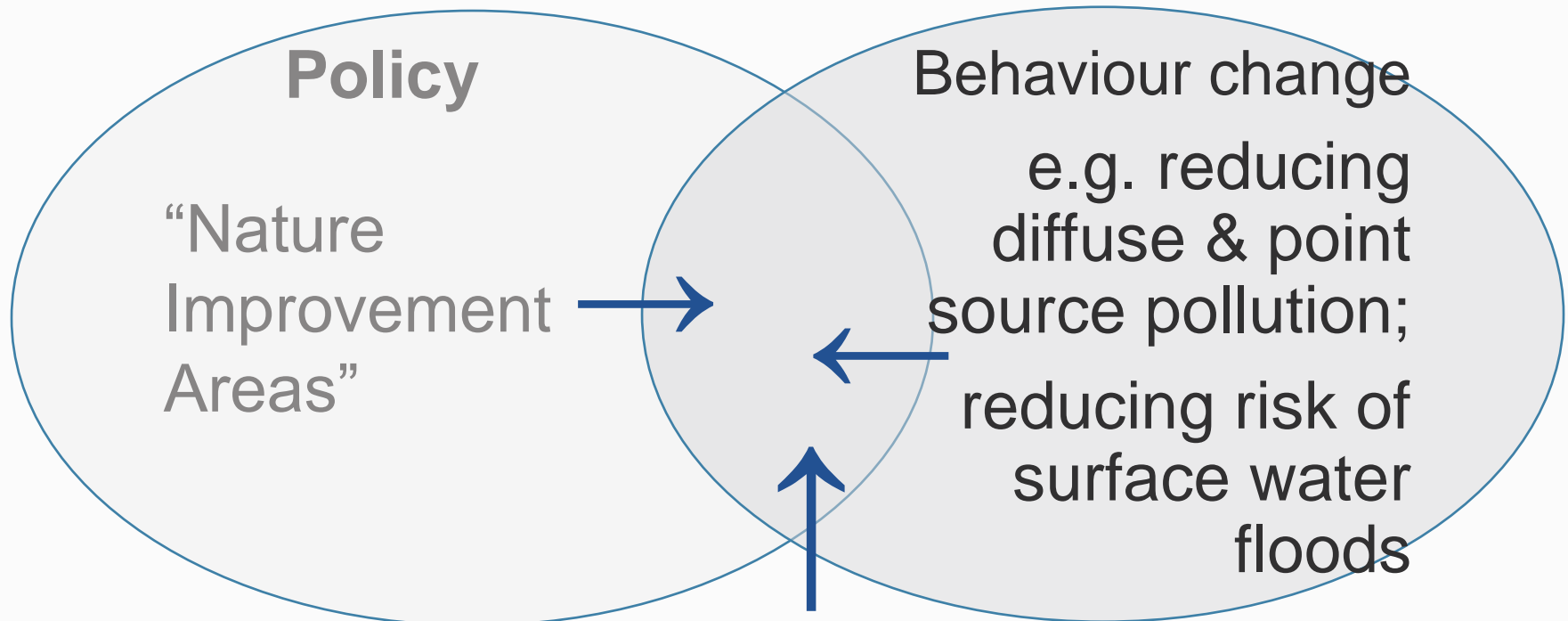
- *To enable NIA partnerships to take evidence-based local policy decisions, dealing with varied and novel scientific and technical information and associated complexity and uncertainty informed by public opinion*
- *To develop, test and apply novel methods of engagement processes to encourage and enable public dialogue in decision-making and planning for NIAs*



Reaching out

**Engaging local
communities &
communities of
interest**

The interaction between public policy, dialogue and behaviour change:



Engaging communities in dialogue can help inform decision-makers about appropriate incentives & infrastructure to support appropriate behaviour change

18 SEPTEMBER 2014

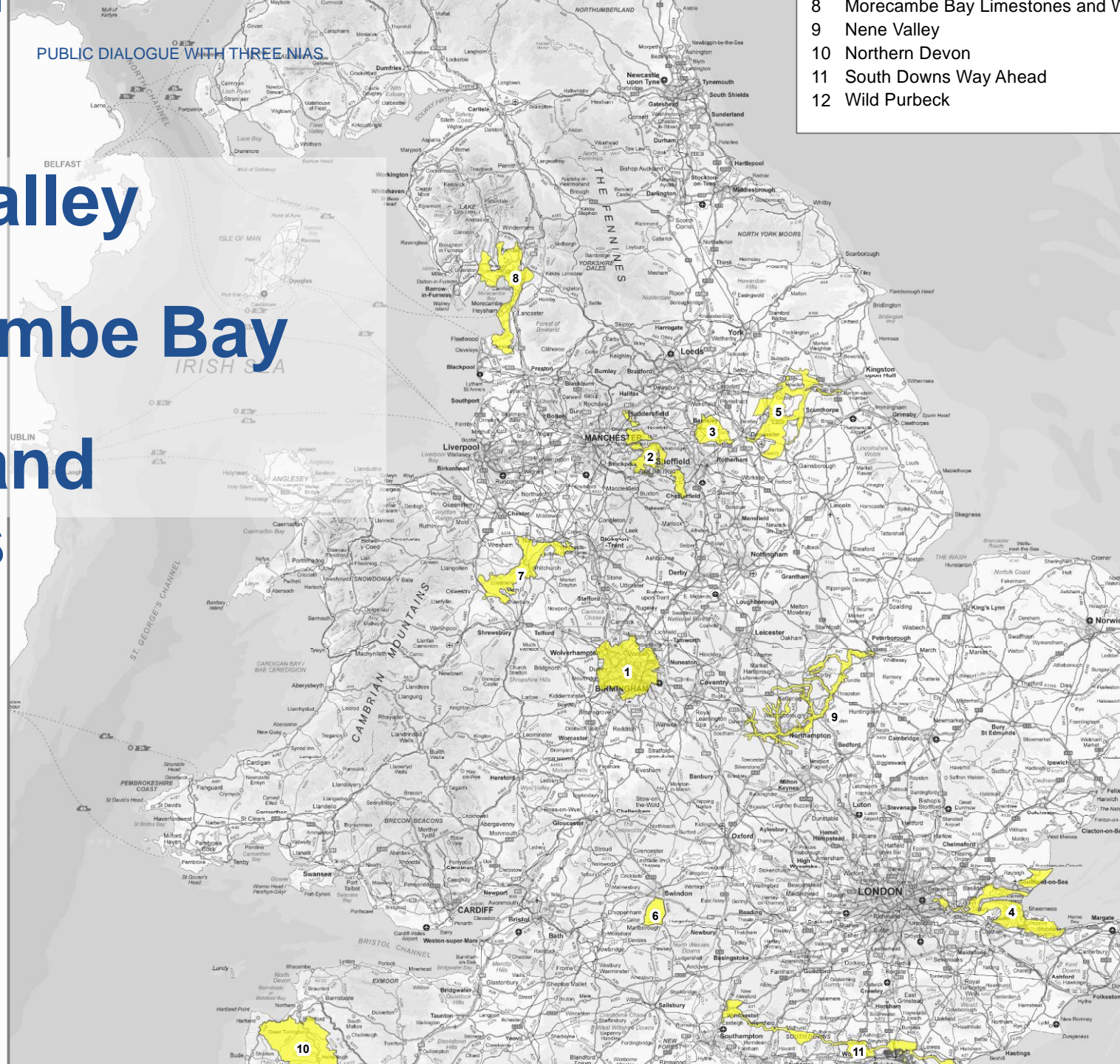
PUBLIC DIALOGUE WITH THREE NIAs

Nene Valley

Morecambe Bay

Meres and Mosses

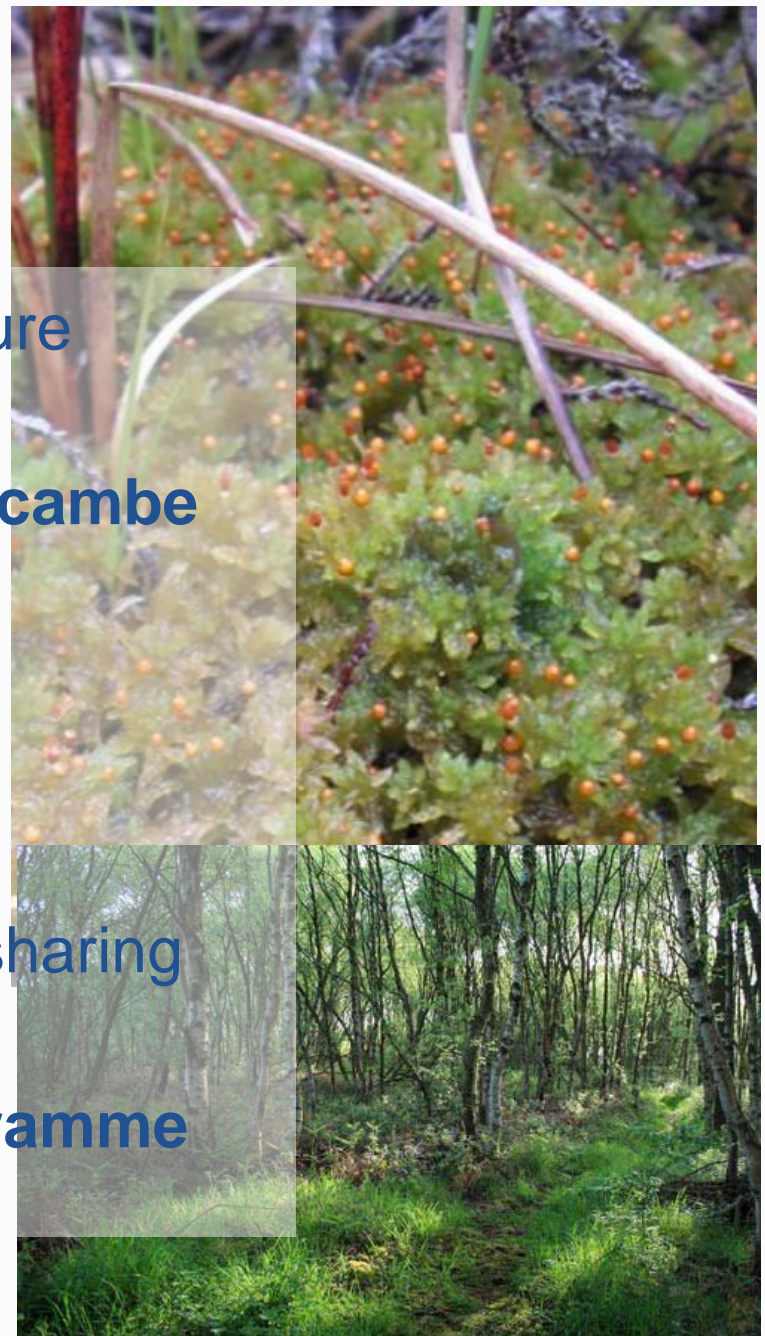
- 8 Morecambe Bay Limestones and
- 9 Nene Valley
- 10 Northern Devon
- 11 South Downs Way Ahead
- 12 Wild Purbeck



Morecambe Bay

Local Nature Partnership

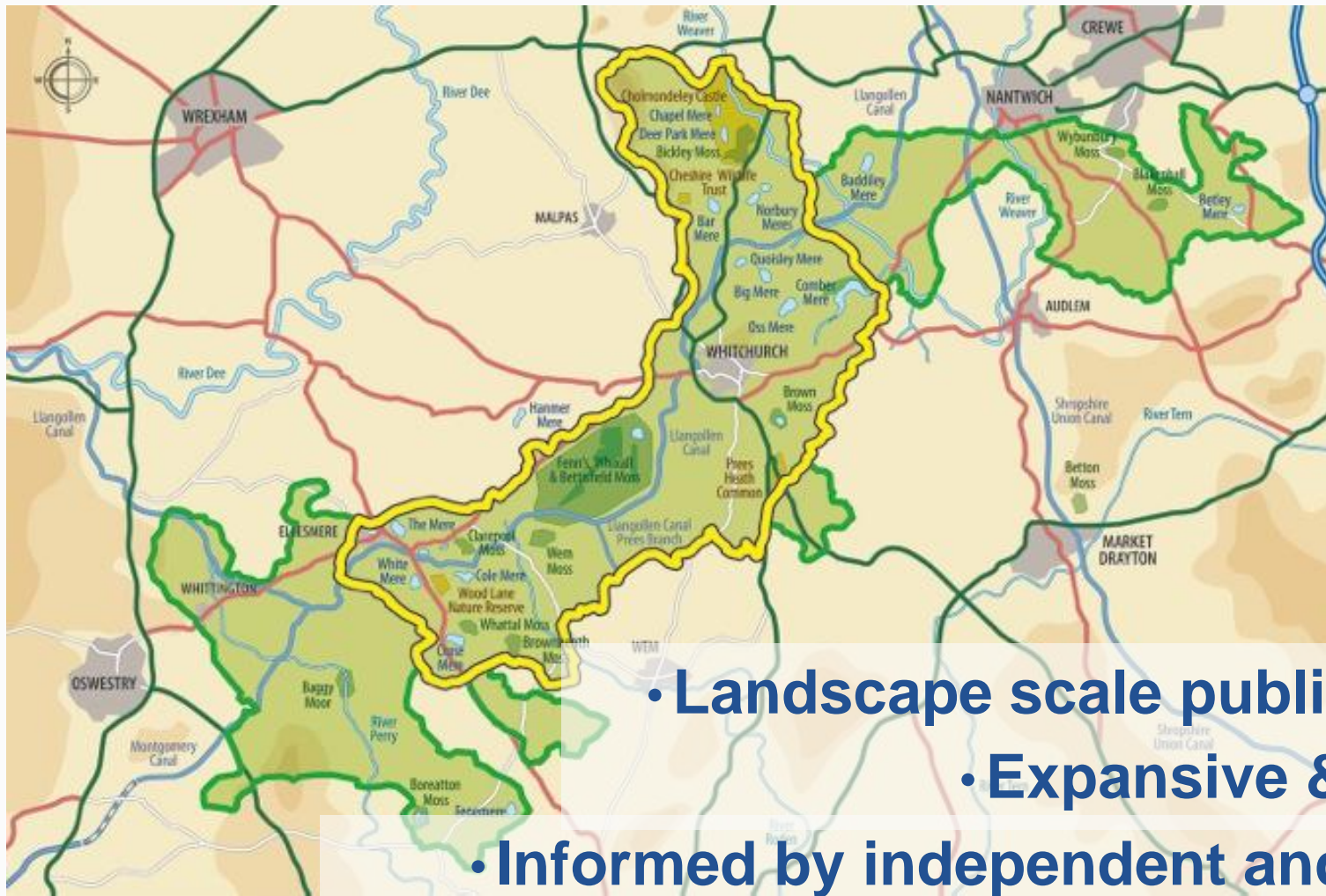
- Morecambe Bay woodfuel & nature tourism projects
- **Enhancing and restoring Morecambe Bay priority habitat**
- Creating connectivity
- Demonstration events
- Achieving gains for the natural environment through planning , sharing good practice and lessons learnt
- **Community engagement programme**



NENE VALLEY

Nature • Improvement • Area
connecting people and nature

Engagement Activity		Spring-Summer 23	Autumn 23		Winter 23-24		Spring 24	Summer 24		Autumn 24		Winter 24-25	
Workstream	Activity												
Workstream 1: Community Panel Pilot; Northampton Washlands	Community Panel Pilot; Northampton Washlands	PP	PP	PP	PP	PP	PP	PP	PP	PP	PP	PP	PP
	Planning for Pilot	PP	PP	PP	PP	PP	PP	PP	PP	PP	PP	PP	PP
	Recruitment for Panel	PP	PP	PP	PP	PP	PP	PP	PP	PP	PP	PP	PP
	Panel meetings	PP	PP	PP	PP	PP	PP	PP	PP	PP	PP	PP	PP
	Production of Action Plan	PP	PP	PP	PP	PP	PP	PP	PP	PP	PP	PP	PP
	Presentation of Action Plan to Board	PP	PP	PP	PP	PP	PP	PP	PP	PP	PP	PP	PP
Workstream 2: Roll out of Community Panel process; Summer Leys/Mary's Lake	Roll out of Community Panel process; Summer Leys/Mary's Lake	PP	PP	PP	PP	PP	PP	PP	PP	PP	PP	PP	PP
	Review learning from pilot and assess visitor access research	PP	PP	PP	PP	PP	PP	PP	PP	PP	PP	PP	PP
	Planning for Panel	PP	PP	PP	PP	PP	PP	PP	PP	PP	PP	PP	PP
	Recruitment for Panel	PP	PP	PP	PP	PP	PP	PP	PP	PP	PP	PP	PP
	Panel meetings	PP	PP	PP	PP	PP	PP	PP	PP	PP	PP	PP	PP
	Production of Action Plan	PP	PP	PP	PP	PP	PP	PP	PP	PP	PP	PP	PP
Workstream 3: Interactive website	Interactive website	PP	PP	PP	PP	PP	PP	PP	PP	PP	PP	PP	PP
	Website specification developed	PP	PP	PP	PP	PP	PP	PP	PP	PP	PP	PP	PP
	Website contractor commissioned	PP	PP	PP	PP	PP	PP	PP	PP	PP	PP	PP	PP
	Website developed	PP	PP	PP	PP	PP	PP	PP	PP	PP	PP	PP	PP
	Website launched	PP	PP	PP	PP	PP	PP	PP	PP	PP	PP	PP	PP
	Online dialogue	PP	PP	PP	PP	PP	PP	PP	PP	PP	PP	PP	PP
Workstream 4: Training and guidance	Training and guidance	PP	PP	PP	PP	PP	PP	PP	PP	PP	PP	PP	PP
	Training plan developed and delivered	PP	PP	PP	PP	PP	PP	PP	PP	PP	PP	PP	PP
	Guidance paper drafted and edited	PP	PP	PP	PP	PP	PP	PP	PP	PP	PP	PP	PP
Workstream 5: Wider engagement with youth and community groups	Wider engagement with youth and community groups	PP	PP	PP	PP	PP	PP	PP	PP	PP	PP	PP	PP
	Plover Fest design and delivery Arts activities and installations	PP	PP	PP	PP	PP	PP	PP	PP	PP	PP	PP	PP



meres & mosses

Landscape Partnership Scheme and
Nature Improvement Area

- Landscape scale public dialogue
- Expansive & Inclusive
- Informed by independent and balanced evidence base & tools (e.g. google earth)
- Avoiding bias by incentivising participation, engaging different groups, e.g. students and in urban areas

Scoping the conversation about the Meres & Mosses NIA

For breadth: Surveying what landscape elements are valued & what needs protecting

Preparation, informing and stimulating the dialogue

For depth – interviews with prominent thinkers, stakeholder workshop - what policies and plans can be influenced by the public? How?

Exploring the views of people with a broad range of interests from across the area

9 Public dialogue workshops <100 people

Exploring options for delivery

Second stakeholder workshop

Two way conversation

Mixed public and stakeholder workshop

Reporting and dissemination

Film: "Views in a landscape"

**What kind of
dialogue is
most
appropriate**

There are many different ways to enter into a dialogue with the public., so before deciding the best method, think:

What are the project needs? (if intervention is necessary, what kind of intervention is possible.....)

Who can help influence / deliver that sort of intervention

How might they help?





Now it's your turn to watch...