



Analysis of Accessible Natural Greenspace Provision for **Suffolk**

Commissioned and funded by:



www.naturalengland.org.uk

Analysis and report undertaken by:

thelandscapepartnership

www.landscapepartnership.com

Front cover photograph: Holywells Park, Ipswich.
The Landscape Partnership

Contents

- Overview (by Natural England)
- Introduction
- What is the Accessible Natural Greenspace Standard (ANGSt)?
- Background to ANGSt
- Accessible natural greenspace definition
- Methodology
- Study area
- Accessible natural greenspace datasets
- Data analysis
- Results
 - Babergh District Council
 - Forest Heath District Council
 - Ipswich Borough Council
 - Mid Suffolk District Council
 - St Edmundsbury Borough Council
 - Suffolk Coastal District Council
 - Waveney District Council
- Conclusions
- Bibliography

Overview

Natural England believes that everyone should have access to good quality natural greenspaces near to where they live. Natural England published its 'Nature Nearby' report in March 2010, which provides guidance for the planners and managers of greenspace; guidance on the amount, quality, and visitor services we believe everyone is entitled to. The 'Nature Nearby' report complements this report, which analyses the accessible natural greenspace provision across Suffolk using the Accessible Natural Greenspace Standard (ANGSt), and provides the evidence for greenspace planners and managers to look at improving both the quantity and quality of this important resource.

Natural greenspaces are very important to our quality of life. They provide a wide range of benefits for people and the environment. Recent evidence shows that access to natural greenspaces for fresh air, exercise and quiet contemplation has benefits for both physical and mental health. Research provides good evidence of reductions in levels of heart disease, obesity and depression where people live close to greenspaces. In addition to their potential ecological value, greenspaces also help us adapt to changes in climate through their role in reducing the risk of flooding and by cooling the local environment. Where trees are present they also act as filters for air pollution.

So it is timely that Natural England commissioned this analysis of accessible natural greenspace provision in Suffolk. The report uses the best data available, and by applying the Natural England recommended standard for provision, it provides the evidence to help plan for future improvements to the quantity and location of natural greenspaces. This is particularly important for a county where substantial new growth is planned, and green infrastructure planning is just getting underway. The findings of this analysis will provide a strong evidence base in the green infrastructure planning process, which gives the opportunity to make recommendations on how to rectify existing deficits in greenspaces at neighbourhood, town, and sub-regional scales.

The report shows that:

31.7% of households have access to an accessible natural greenspace of at least 2 hectares within 300 metres

45.9% of households have access to an accessible natural greenspace of at least 20 hectares within 2 kilometres

25.9% of households have access to an accessible natural greenspace of at least 100 hectares within 5 kilometres

28.3% of households have access to an accessible natural greenspace of at least 500 hectares within 10 kilometres

3.4% of households have access to all the areas of accessible natural greenspace within the standard

32.9% do not have access to any of the accessible natural greenspace within the standard

Using the evidence from this report and the guidance provided in 'Nature Nearby', Natural England looks forward to working in partnership with local authorities and other organisations in Suffolk to achieve improvements in the quantity, location and quality of natural greenspaces as part of the wider green infrastructure network.

Diana Curtis

Access Mapping Adviser
East of England Region

Introduction

ANGSt was developed in the early 1990's and was based on research into minimum distances people would travel to the natural environment. Natural England reviewed the standard in 2008 and concluded that the standard was still useful, but that further guidance was required to explain how the standard should be applied. The "Nature Nearby" report, published in March 2010, provides this additional clarity, and should therefore be read in conjunction with this report.

What is the Accessible Natural Greenspace Standard (ANGSt)?

ANGSt recommends* that everyone, wherever they live, should have one accessible natural greenspace:

- of at least 2 hectares in size, no more than 300 metres (5 minutes walk) from home;
- at least one accessible 20 hectare site within two kilometres of home;
- one accessible 100 hectare site within five kilometres of home; and;
- one accessible 500 hectare site within ten kilometres of home; plus
- a minimum of one hectare of statutory Local Nature Reserves per thousand population

ANGSt is a powerful tool in assessing current levels of accessible natural greenspace, and planning for better provision. The three underlying principles of ANGSt are:

- Improving access to greenspaces
- Improving naturalness of greenspaces
- Improving connectivity with greenspaces

* Information sourced from 'Nature Nearby', Accessible Natural Greenspace Guidance document

Background to ANGSt

Planning Policy Guidance 17 (PPG17) (ODPM [now CLG], 2002a) recommends that local authorities carry out assessments and audits to identify deficits or surpluses in the provision of open space (including natural and semi-natural greenspace), sports and recreational facilities. The Companion Guide to PPG17 (ODPM [now CLG], 2002b) highlights the use of Natural England's ANGSt as the model to assess the provision of natural and semi-natural greenspace, although it does not constrain local authorities from developing alternative approaches.

The East of England Biodiversity Delivery Plan (East of England Biodiversity Forum, 2008) aims to push for regional compliance with the ANGSt. This study undertaken for and on behalf of Natural England will support the Delivery Plan by contributing to an understanding of the regional provision of green infrastructure, together with similar reports for other counties in the region.

Accessible Natural Greenspace (ANG) definition

The 'Nature Nearby' report gives clear explanations on how to interpret the standard with respect to naturalness and accessibility. This analysis was commissioned ahead of the publication of 'Nature Nearby', and uses the definition 'places where human control and activities are not so intensive so that natural processes are allowed to predominate' (Handley et al, 2003a).

Within the ANGSt model, accessibility means the 'ability of visitors to physically gain access to a site' (Handley et al, 2003b). In Suffolk, sites with unrestricted entry were included, but those with known access restrictions or no rights of access were excluded. Also excluded were sites where accessibility and naturalness were not clear from supporting information, and sites not easily discernable from desktop assessments of aerial photography or internet searches. This was particularly important when dealing with datasets provided by local authorities in place of PPG17 data (because, it is presumed, no PPG17 study has yet been undertaken) where the quality and depth of the supporting information varied.

Methodology

The methodology followed was based on the ANGSt analysis toolkit (Handley et al, 2003b). An inventory of accessible natural greenspace data was compiled in a Geographic Information System (GIS), to which the ANGSt model was then applied, with the results showing areas of adequate provision or deficiency, as described in the ANGSt model. The flowchart in **Figure 1** (McKernan & Grose, 2007, adapted from Handley et al, 2003b) shows the analysis process.

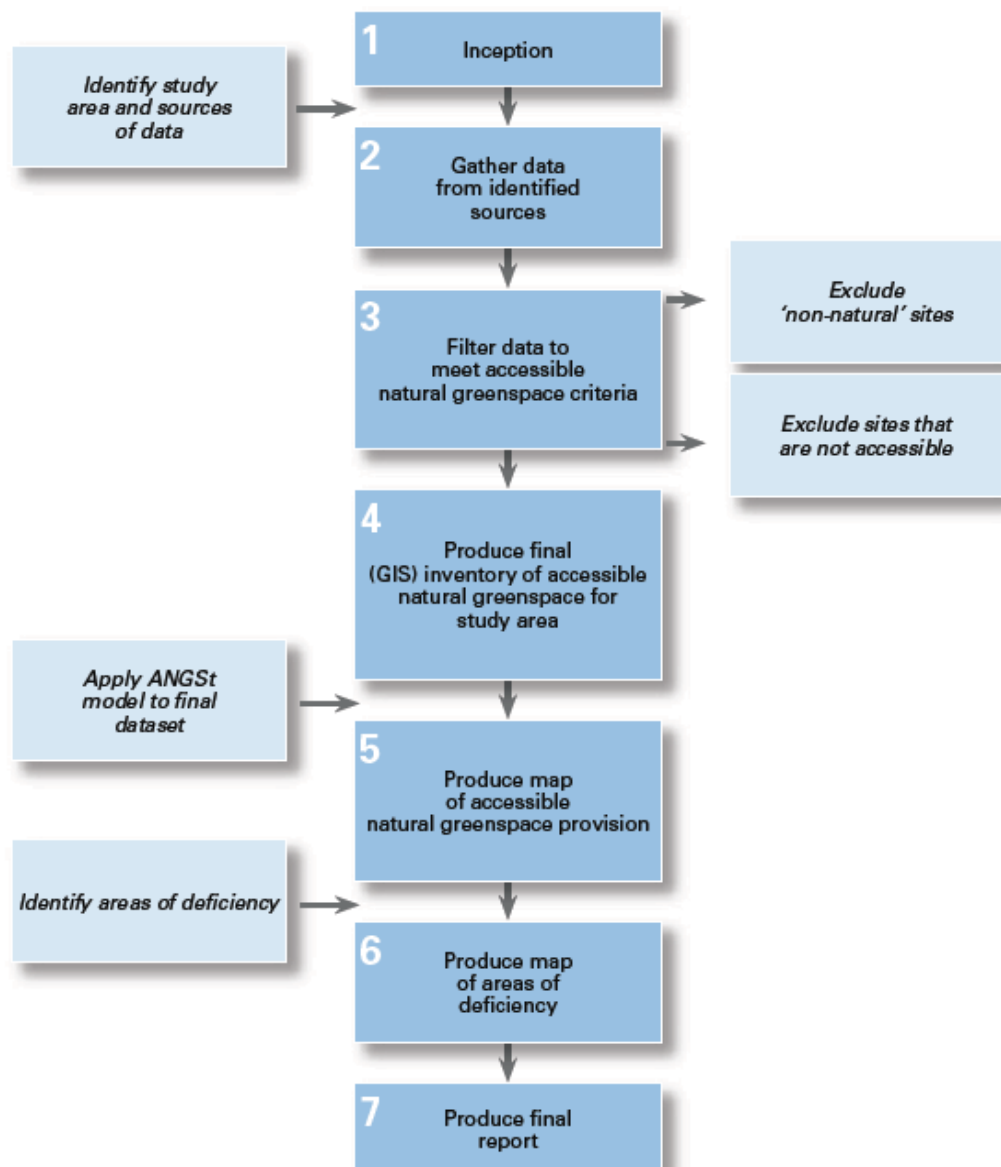
Limitations to the data analysis included some local authorities being unable to provide PPG17 data or they provided 'open space' data which did not feature the typologies that PPG17 data includes.

This had the effect of potentially reducing the supply of smaller sites for analysis in the affected areas; it is advised that the results be regarded in light of this.

With respect to the Village Green data this was only available in point format. To enable these important sites to be included in the overall analysis, circular features were generated which were equal to the size of the sites on the ground. It was envisaged that any differences resulting from the analysis in terms of proximity of households to these sites would be minimal and not affect the validity of the final report in terms of its intended use.

Figure 1

Flowchart showing Study area ANGSt analysis process



Study area

The study aimed to produce an analysis for Suffolk. In order to take account of areas of accessible natural greenspace outside of Suffolk that may be serving the needs of the population within Suffolk, accessible natural greenspace data were collated (where providers were able to do so) from within a ten kilometre buffer of the study area, as required by the ANGSt toolkit (Handley et al, 2003b).

Accessible natural greenspace datasets

Data were collated from a variety of sources, (detailed below) and filtered to the criteria in the ANGSt definition (in the introduction).

Data were provided in digital (GIS) format and attribute information for the data was checked to ensure compliance with the criteria.

When requesting data from suppliers the need for it to represent accessibility and naturalness was expressed. This was intended to provide an initial sifting effect to remove non-natural sites.

For local authorities' PPG17 data, sites within some categories of data (e.g. parks and gardens, commons, amenity space) were checked against aerial photographs to ascertain 'naturalness'. The Landscape Partnership's local knowledge helped with the sifting exercise and where there was doubt over a site it was removed from the inventory.

The following datasets were included in the analysis:

Accessible county wildlife sites; commonland; Country Parks; open access under the Countryside and Rights of Way Act 2000 (CRoW); Doorstep Greens; Forestry Commission Freehold Land with unrestricted access; Forestry Commission Walkers Welcome Woodland Grant Scheme; local authority PPG17 datasets; Local Nature Reserves; Millenium Greens; National Nature Reserves (excluding those with limited accessibility); Natural England agri-environment grant schemes providing access; Village Greens; Woodland Trust sites; Woods for People; National Trust sites that are accessible all year.

Data were kindly provided by:

Natural England, Woodland Trust, the Forestry Commission, Suffolk County Council and the following local authorities:

Local authorities that supplied PPG17 data:

None

Local authorities that supplied other open space data:

Forest Heath District Council, Ipswich Borough Council, Waveney District Council

Local authorities unable to provide data:

Babergh District Council, Mid Suffolk District Council, St Edmundsbury Borough Council, Suffolk Coastal District Council

Data analysis

The data analysis was carried out using the GIS programme ArcView 9.3 by ESRI. All overlapping and adjoining sites within the accessible natural greenspace inventory were aggregated and extracted to the ANGSt.

The aggregated sites were subjected to further scrutiny by eye – where sites were immediately adjacent but not abutting (so the GIS programme did not merge them) they were manually merged where the nature of the division could be ascertained by reference to Ordnance Survey maps and aerial photos. If the sites were separated by a minor road this was considered ‘acceptable’, where the division was caused by a river, railway line or major road the division remained. This manual aggregation was undertaken mostly at the 100ha+ level where aggregation of sites meant they moved up to the 500ha+ level and therefore provided a more realistic 10km catchment. Some 100ha+ sites were generated this way too.

Sites of less than 2 hectares were removed from the inventory and the areas within each size class had buffers created around them according to the catchment zone stated within the ANGSt model (as per introduction).

Data for residential households (using AddressPoint, 2005) within the study area were extracted to each local authority area to establish the number of households served by each size class in the ANGSt model. In order to ensure consistency across the data analysis, population levels were represented as percentages. As a method of quality control the figures for households in each local authority area were compared against figures from the 2001 Census from the Office of National Statistics website. In all cases the 2001 figure was lower than the 2005 figure as would logically be expected.

In Plan 1 overleaf the ANG that is ‘visible’ represents sites:

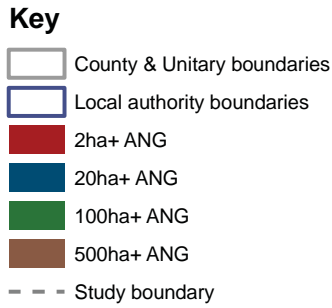
- 500ha and above
- 100ha and above but below 500ha
- 20ha and above but below 100ha
- 2ha and above but below 20ha

The ANG provision is represented graphically following this hierarchy. The mapping featured in this report is also being issued to Natural England as a layered GEO.pdf (a layered pdf). Using this format the user can turn off, for instance, the 500ha+ layer revealing the relevant sites at the other ANGSt levels.

Results

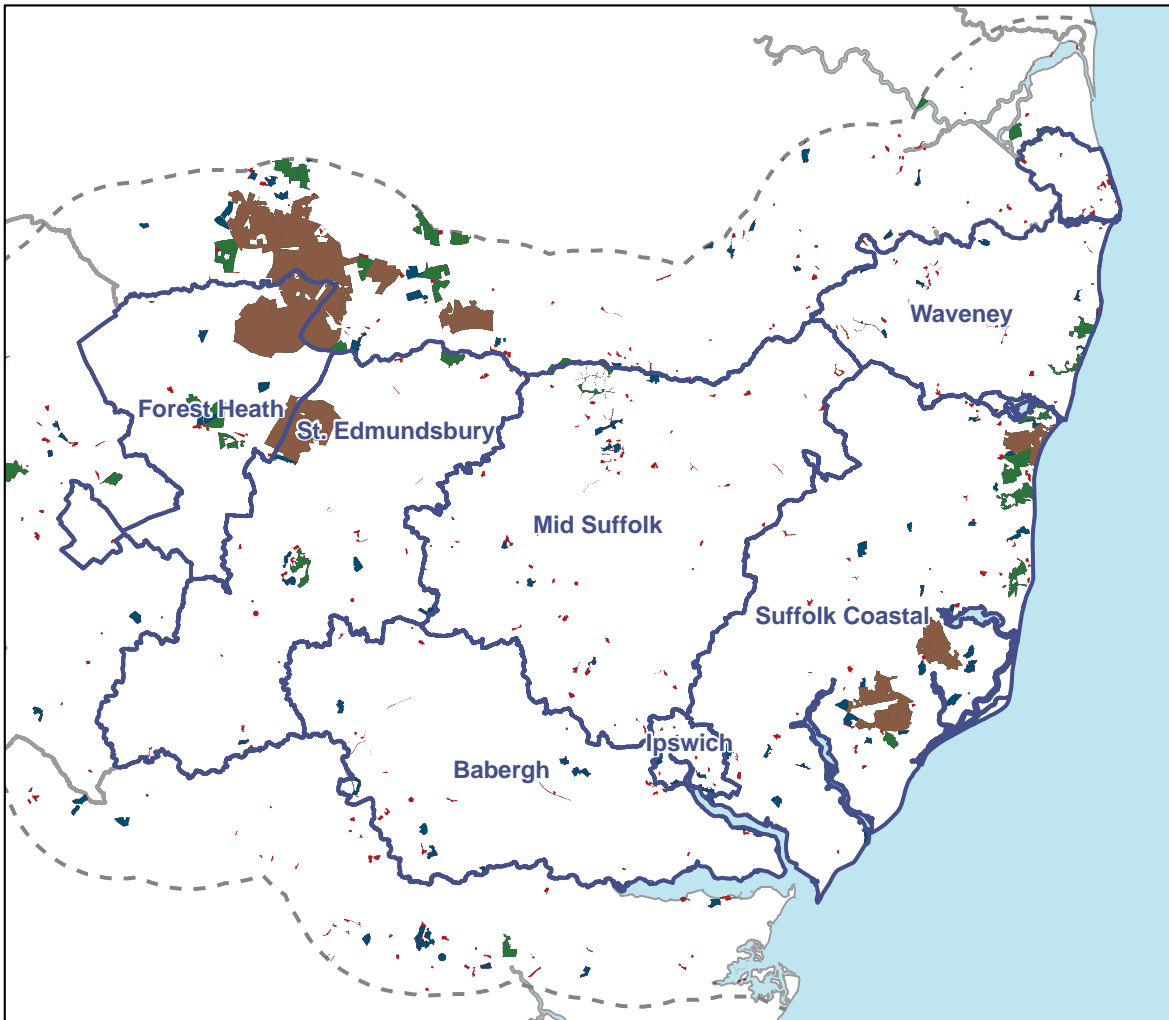
The results of the analysis of accessible natural greenspace provision for Suffolk are provided in this section.

Plan 1 shows all the accessible natural greenspace within the study area and the 10km buffer zone, displayed by ANGSt model size classes.










Plan 1

All accessible natural greenspace divided into ANGSt size classes



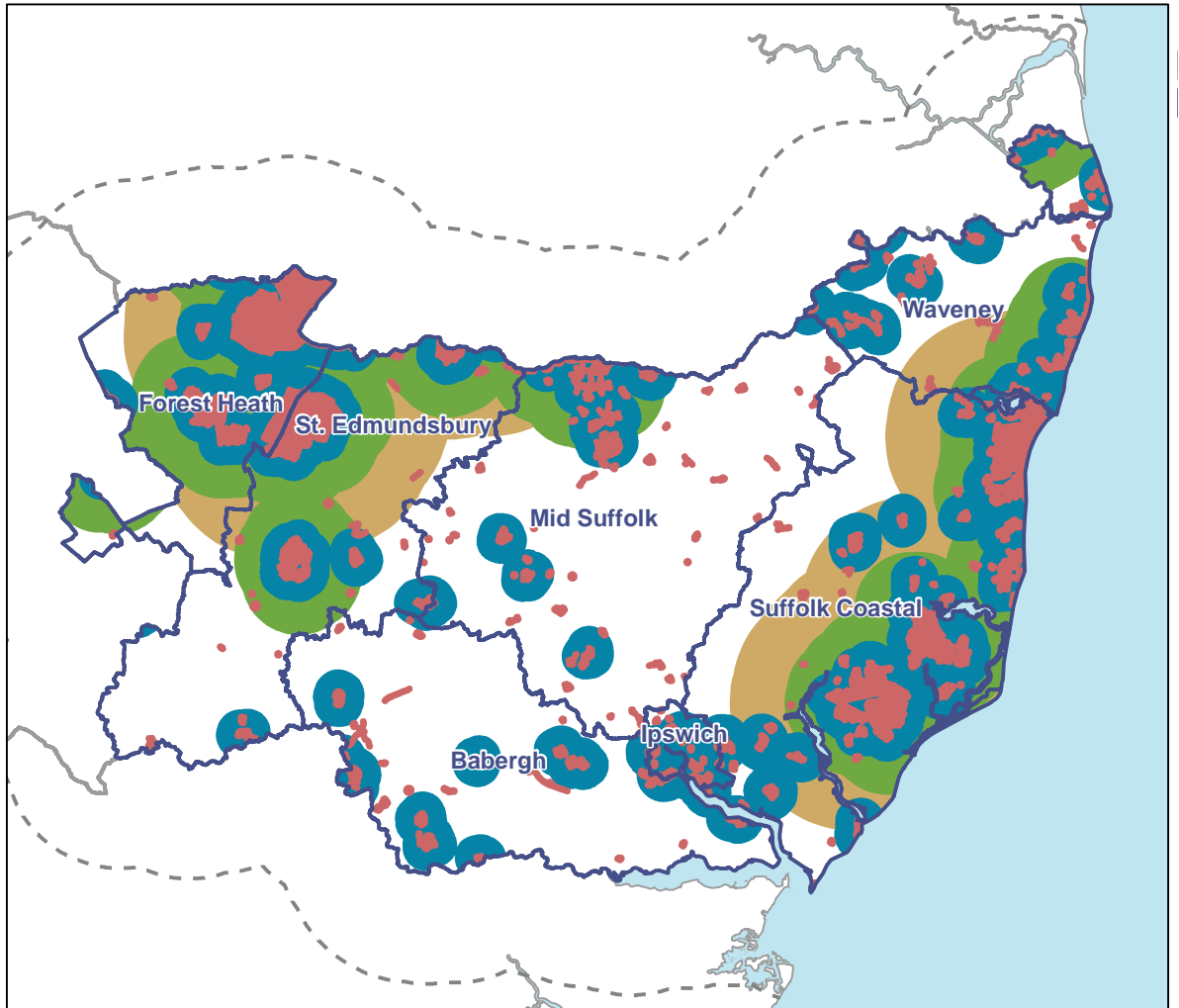
Plan 2 shows the combined buffers around the accessible natural greenspace for the study area as a whole, with the varying colours representing the 300m, 2km, 5km and 10km distances from the relevant size classes of accessible natural greenspace. It can be seen that a site of 20 hectares would not only have a two kilometre buffer but would also serve as a two hectare site for those households situated within the 300m buffer. The areas not covered by the buffers and therefore not benefiting from any ANG provision are more clearly shown in Plan 3.

Key

-  County & Unitary boundaries
-  Local authority boundaries
-  300m buffer
-  2km buffer
-  5km buffer
-  10km buffer
-  Study boundary

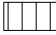




Plan 2

All combined buffers for ANGSt size classes



Plan 3 highlights areas with no accessible natural greenspace provision meeting ANGSt and the accompanying table displays the percentages of households within each local planning authority that have some or none of their ANGSt met. Plan 3 shows that the main areas of deficiency for the combined ANGSt are found in the centre of the county with Babergh and Mid Suffolk most affected.

Key

-  Urban areas (2001 census)
-  Local authority boundaries
-  County & Unitary boundaries
-  Combined Suffolk deficiency
-  Study boundary

Plan 3

Highlights those areas with no accessible natural greenspace provision at all levels of ANGSt analysis

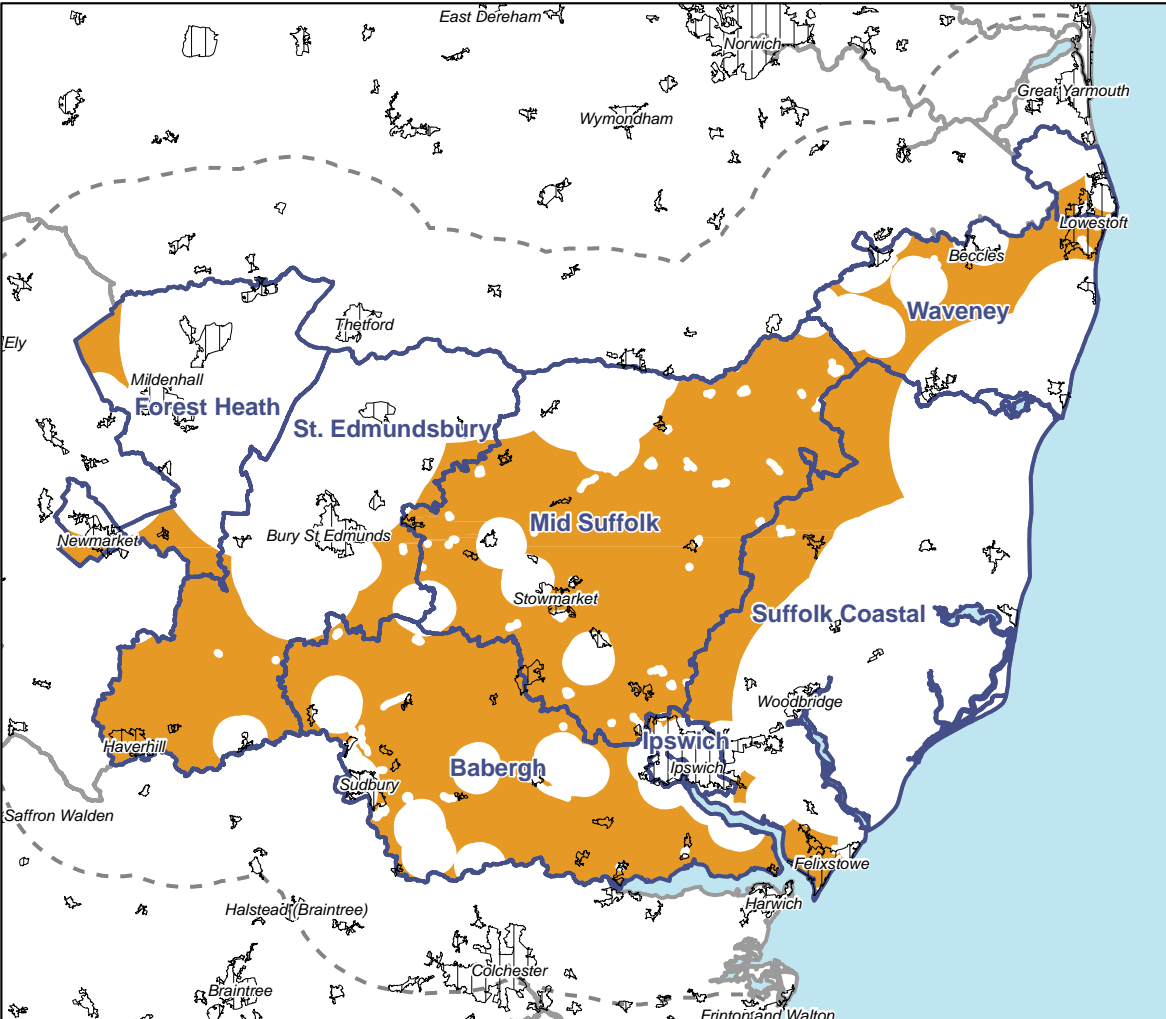


Table 1 Area of accessible natural greenspaces and the number of households within each local planning authority in Suffolk

Forest Heath has the largest proportion of its area made up by ANG at 13.5%, Babergh and Mid Suffolk have the lowest at 1%.

No local authorities in Suffolk were able to provide PPG17 data however; Forest Heath, Ipswich and Waveney were able to provide open space data.

Local planning authority (LPA)	LPA area (ha)	Area (ha) of ANG	ANG area as % of LPA	Total number of households*
Babergh	61,204	617	1.0	40,197
Forest Heath	37,771	5,080	13.5	28,211
Ipswich	4,030	271	6.7	60,104
Mid Suffolk	87,107	903	1.0	42,456
St Edmundsbury	65,697	2,739	4.2	48,511
Suffolk Coastal	92,071	6,105	6.6	60,252
Waveney	37,491	1,016	2.7	57,270
Combined Suffolk total	385,371	16,731	4.3	337,001

*Estimate from 2005 AddressPoint data checked against 2001 Census data

PPG17 data provided
Open space data provided
No data provided

Table 2 Summary data for accessible natural greenspace provision in Suffolk compared to other counties assessed by Natural England for their greenspace provisions

Suffolk has a lower proportion of its population meeting all the ANGSt in comparison to Hertfordshire and Essex. Suffolk also has the highest proportion meeting none of the ANGSt when compared to the other counties.

Local Planning Authority	No of households*	% of households*					
		within 300m of a 2ha+ site	within 2km of a 20ha+ site	within 5km of a 100ha+ site	within 10km of a 500ha+ site	meeting all the ANGSt (%)	meeting none of the ANGSt (%)
Norfolk	407,153	18.1	48.9	36.2	16.1	3.2	29.7
Suffolk	337,001	18.9	45.9	25.9	28.3	3.4	32.9
Herts	484,287	36.2	75.4	69.7	26.5	6.7	6.4
Essex	698,095	29.0	68.0	72.0	19.0	7.0	14.0

*Estimate from 2005 AddressPoint data checked against 2001 Census data

Table 3 Summary results for provision of ANG in the districts studied in Suffolk

This shows the percentage of households in each of the ANGSt, eg. within 300m of at least a 2 hectare site. All seven local authorities can be compared to one another and against the county average. It also shows the percentage of households meeting both all and none of the ANGSt. Here are some of the key results:

- 35% of households in Ipswich are within 300m of 2ha+ ANG
- 94.3% of households in Ipswich are within 2km of 20ha+ ANG
- 77.9% of households in Forest Heath are within 5km of 100ha+ ANG
- Forest Heath, Suffolk Coastal and St Edmundsbury all score twice the county average for provision of ANG at the 500ha+/10km level
- 15.6% of households in Forest Heath meet all the ANGSt – which is over four times the county average
- 64.6% of households in Mid Suffolk meet none of the ANGSt – which is twice the county average

Local Planning Authority	% of households						
	Number of households*	within 300m of a 2ha+ site	within 2km of a 20ha+ site	within 5km of a 100ha+ site	within 10km of a 500ha+ site	meeting all the ANGSt (%)	meeting none of the ANGSt (%)
Babergh	40197	19.0	40.7	0.0	0.0	0.0	51.2
St Edmundsbury	48511	11.8	19.6	47.7	59.8	1.9	31.4
Forest Heath	28211	19.4	47.1	77.9	60.9	15.6	18.3
Ipswich	60104	35.0	94.3	0.0	0.0	0.0	3.0
Mid Suffolk	42456	11.8	25.1	7.4	3.6	0.5	64.6
Suffolk Coastal	60252	13.5	47.3	34.8	60.3	5.5	27.1
Waveney	57270	21.8	47.2	13.3	13.2	0.1	34.8
Suffolk averages	337001.0	18.9	45.9	25.9	28.3	3.4	32.9

*Estimate from 2005 AddressPoint data checked against 2001 Census data

Babergh

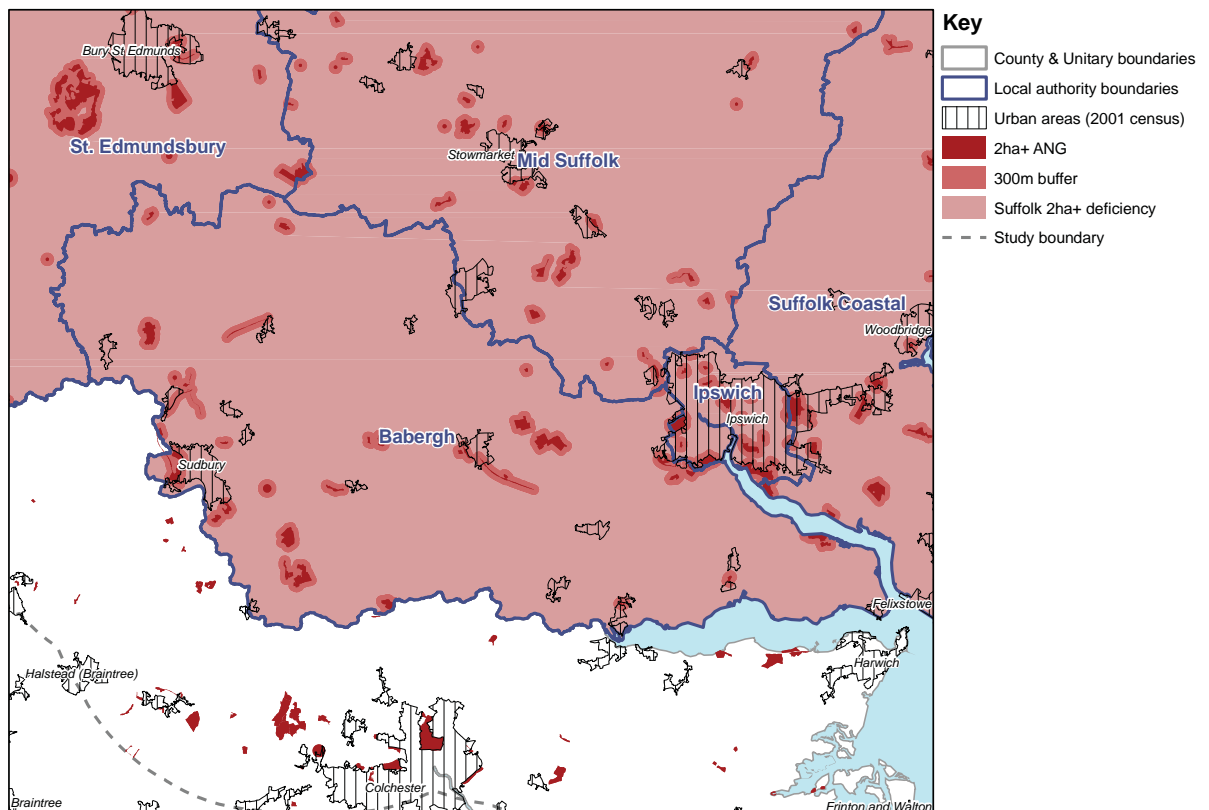
Babergh has a below average proportion of its area made up by ANG at 1%. Babergh were unable to provide PPG17 data, the results below show that Babergh performs comparably with the county averages at both the 2ha+/300m and 20ha+/2k analysis levels. At the 100ha+/5km, 500ha+/10km and combined ANGst levels the results are 0% for Babergh which is well below the county average. At 51.2% Babergh has the second highest proportion of households meeting none of the ANGSt.

Table 4 ANGSt analysis results for Babergh

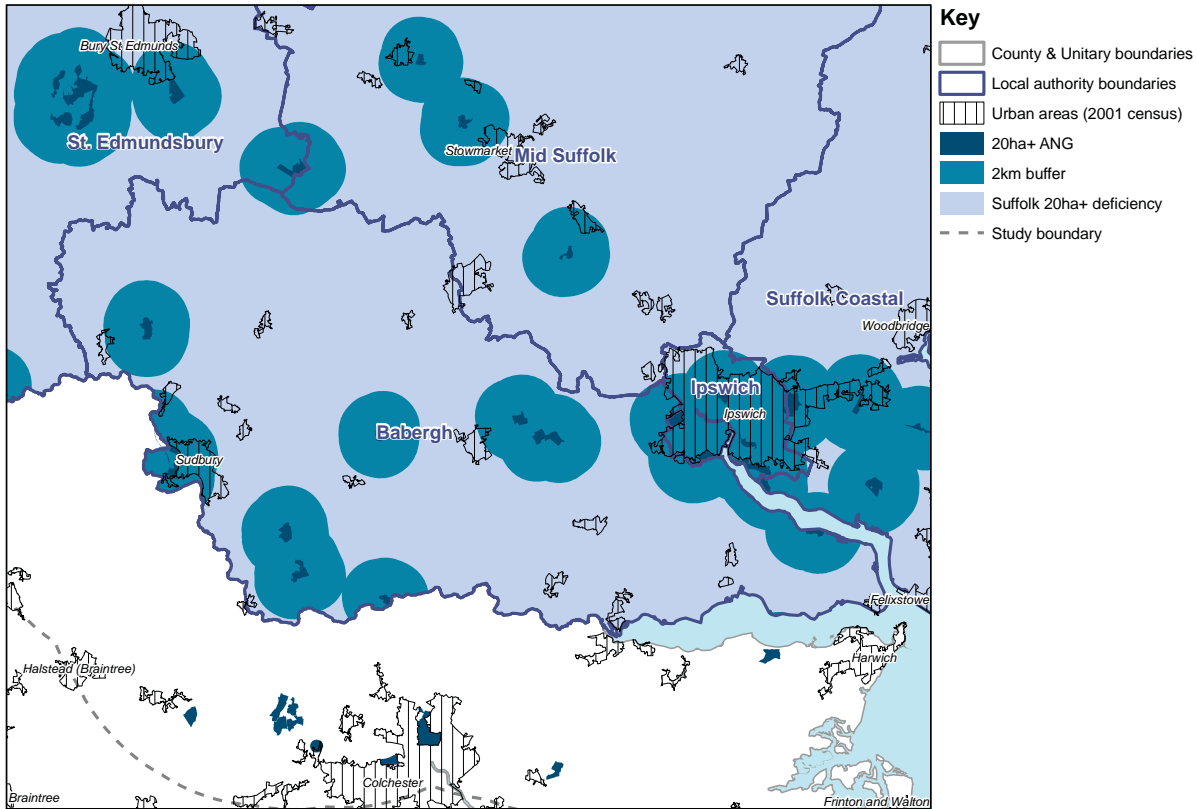
Local Planning Authority	Number of households*	% of households					
		within 300m of a 2ha+ site	within 2km of a 20ha+ site	within 5km of a 100ha+ site	within 10km of a 500ha+ site	meeting all the ANGSt (%)	meeting none of the ANGSt (%)
Babergh	40197	19.0	40.7	0.0	0.0	0.0	51.2
Suffolk averages	337001.0	18.9	45.9	25.9	28.3	3.4	32.9

*Estimate from 2005 AddressPoint data checked against 2001 Census data

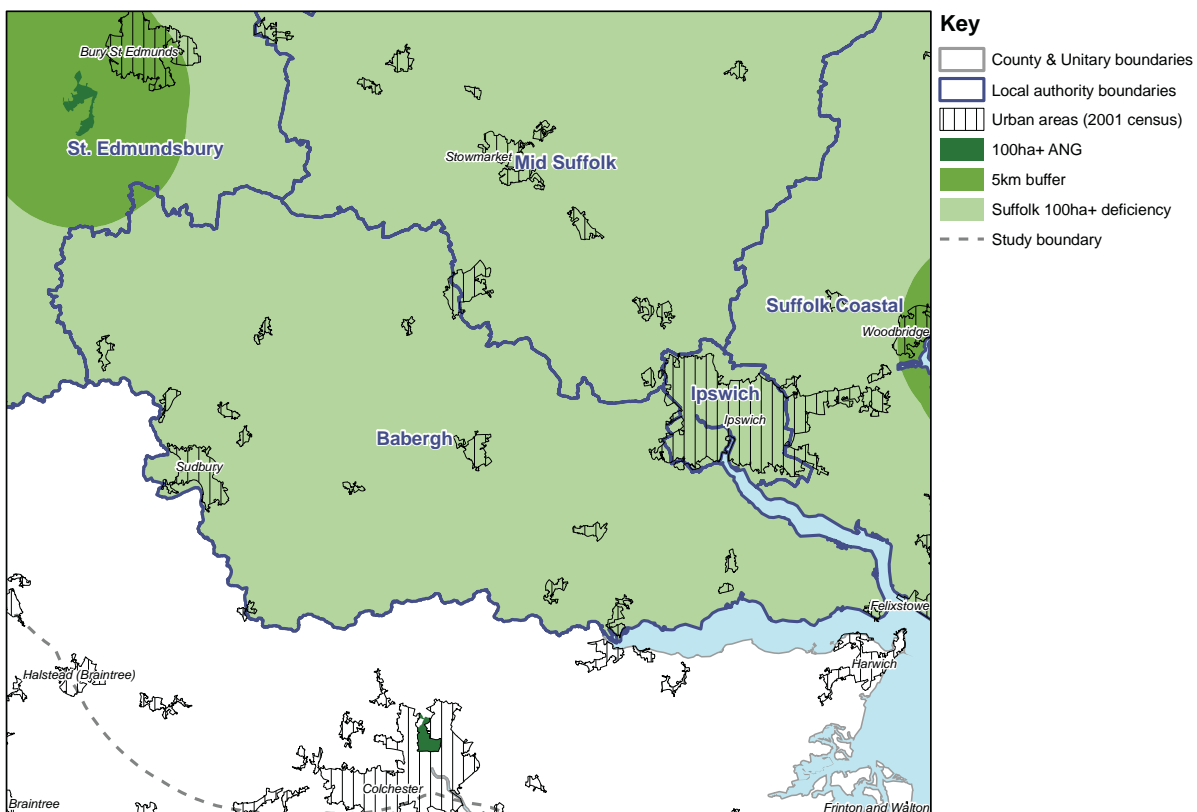
Plan 4a Accessible natural greenspace provision (2ha and above)



Plan 4b Accessible natural greenspace provision (20ha and above)

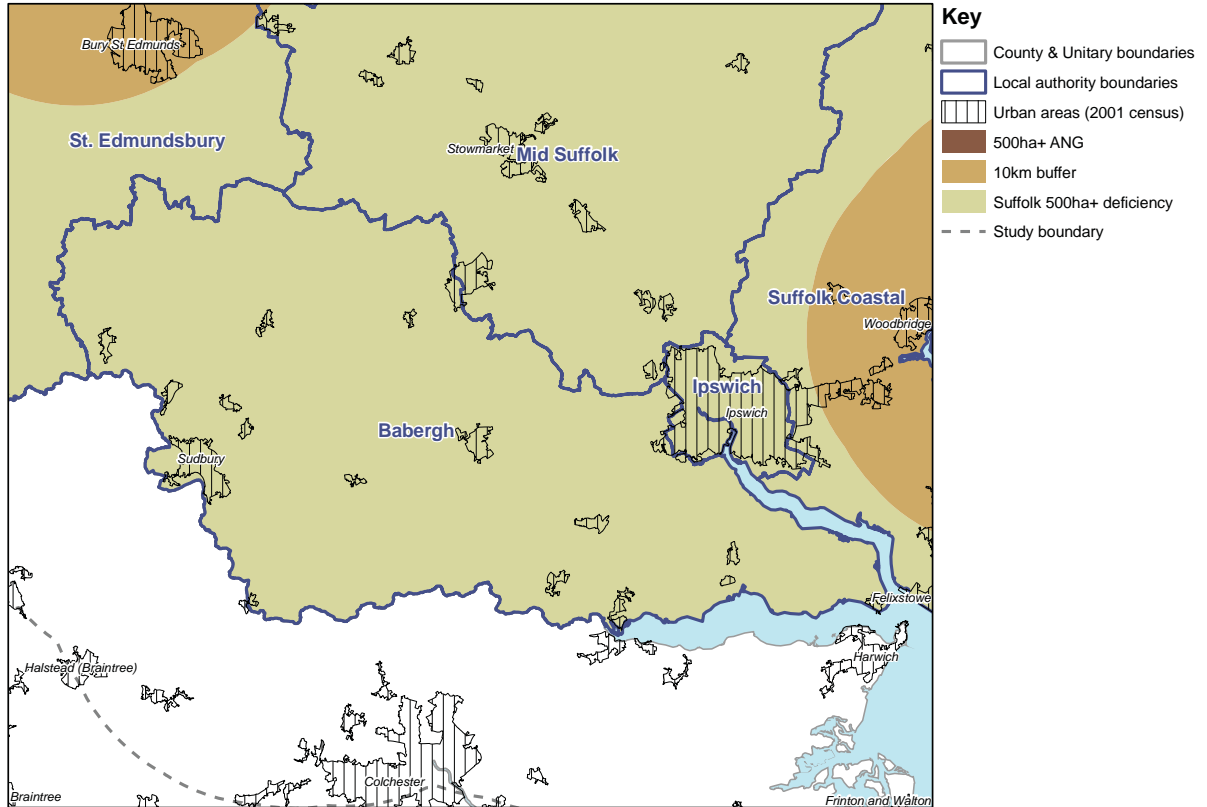


Plan 4c Accessible natural greenspace provision (100ha and above)



Plan 4d Accessible natural greenspace provision (500ha and above)

14



Forest Heath

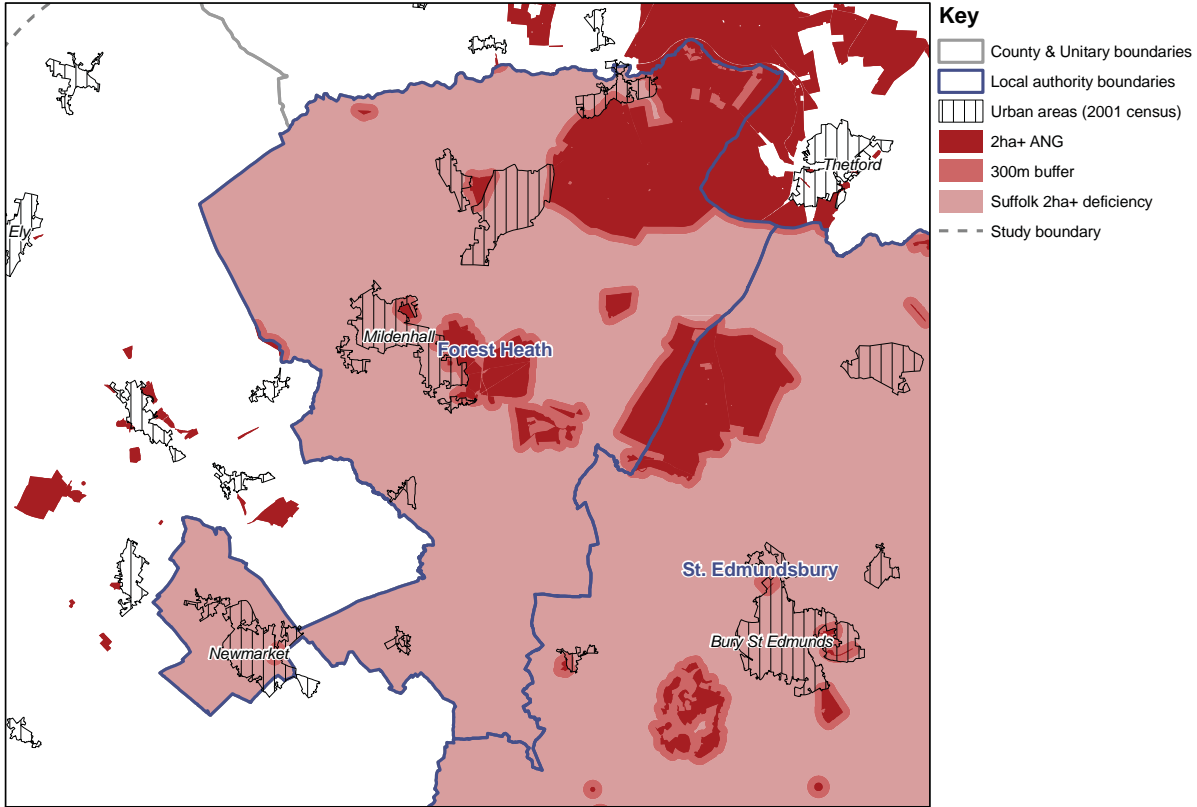
Forest Heath has the highest proportion of its area made up of ANG, at 13.5% it is over three times the county average. Forest Heath provided open space data which has contributed to a slightly above average result at the 2ha+/300m and 20ha+/2km levels. Forest Heath performs particularly well at the 100ha+/5km and 500ha+/10km levels; at 77.9% it is three times the county average, at 60.9% it is over twice the county average respectively. At 15.6% Forest Heath has the highest proportion of households meeting all the ANGSt when compared to the other county figures.

Table 5 ANGSt analysis results for Forest Heath

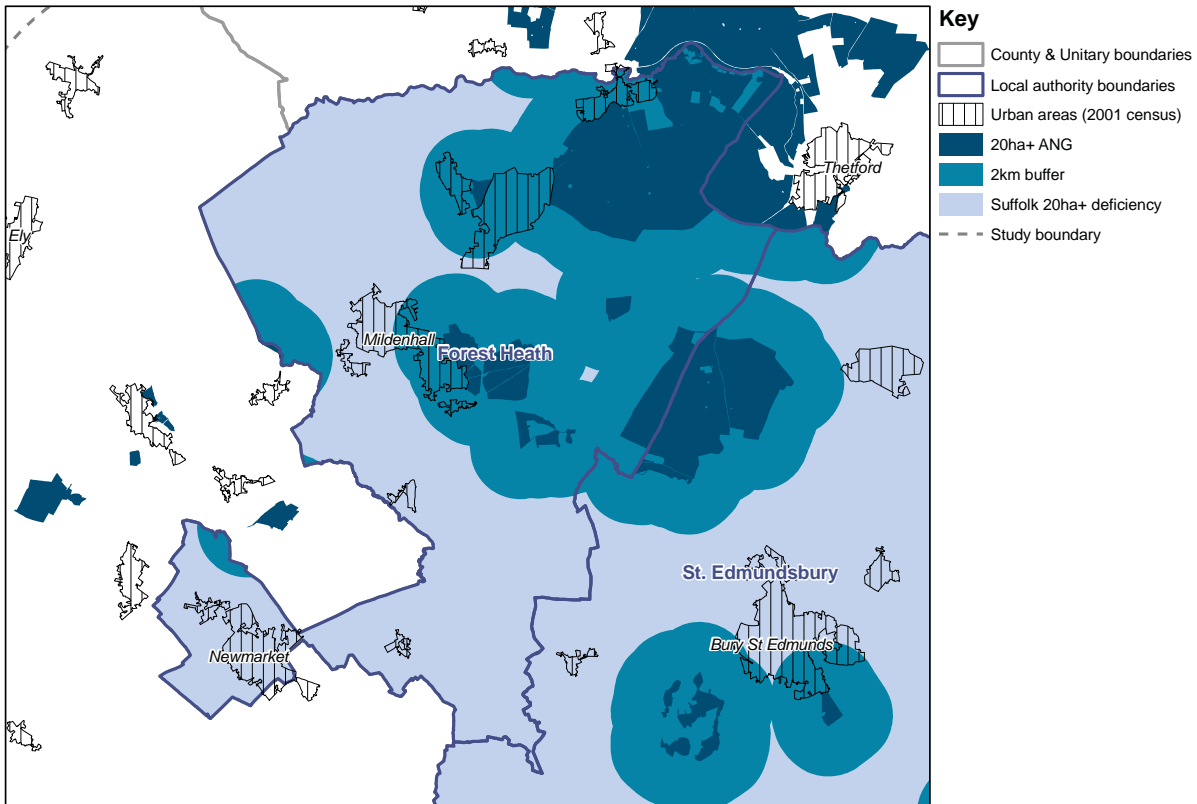
Local Planning Authority	Number of households*	% of households					
		within 300m of a 2ha+ site	within 2km of a 20ha+ site	within 5km of a 100ha+ site	within 10km of a 500ha+ site	meeting all the ANGSt (%)	meeting none of the ANGSt (%)
Forest Heath	28211	19.4	47.1	77.9	60.9	15.6	18.3
Suffolk averages	337001.0	18.9	45.9	25.9	28.3	3.4	32.9

*Estimate from 2005 AddressPoint data checked against 2001 Census data

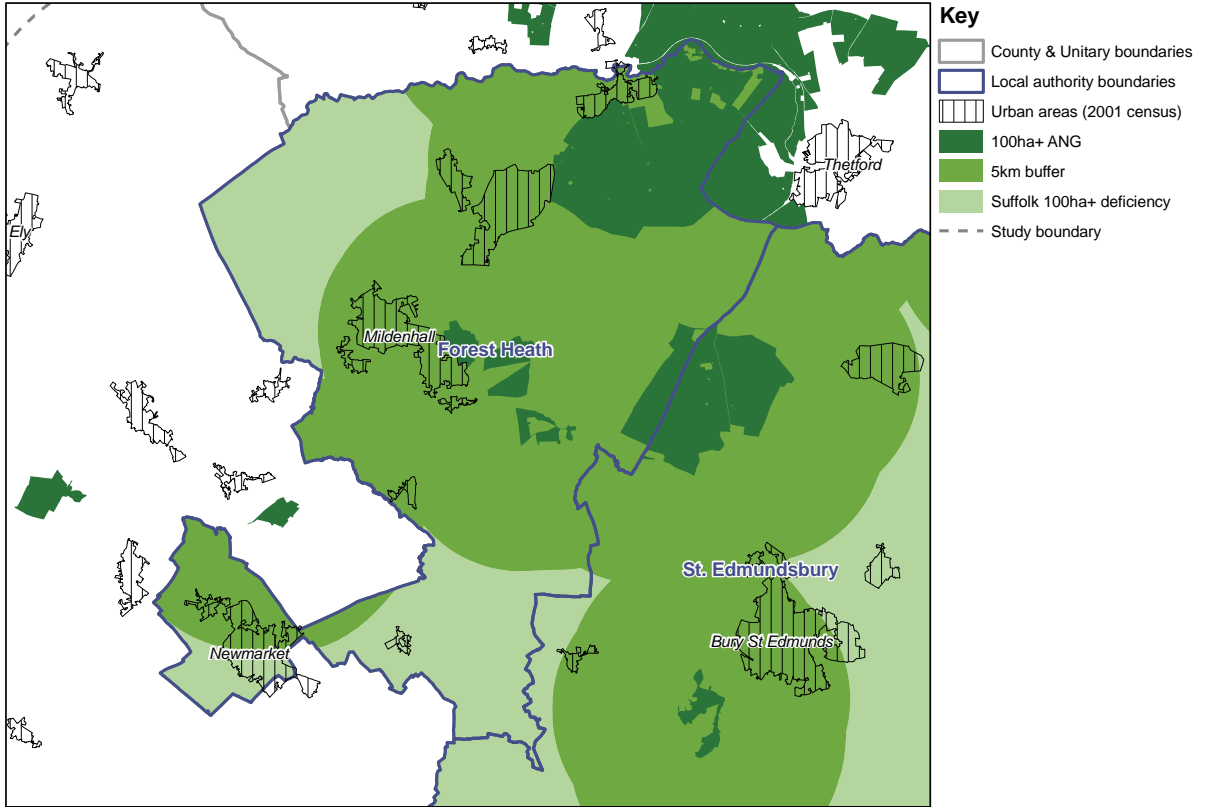
Plan 5a Accessible natural greenspace provision (2ha and above)



Plan 5b Accessible natural greenspace provision (20ha and above)



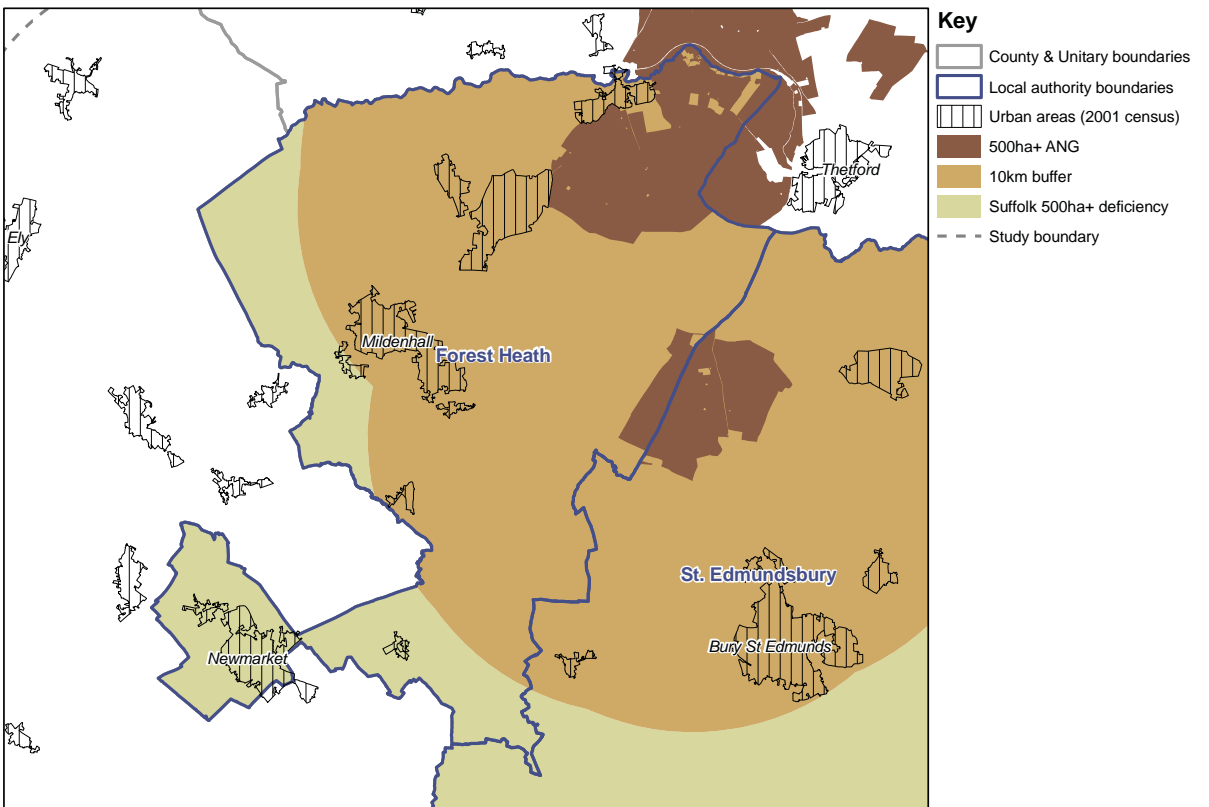
Plan 5c Accessible natural greenspace provision (100ha and above)



16

Analysis of Accessible Natural Greenspace Provision for Suffolk

Plan 5d Accessible natural greenspace provision (500ha and above)



Ipswich

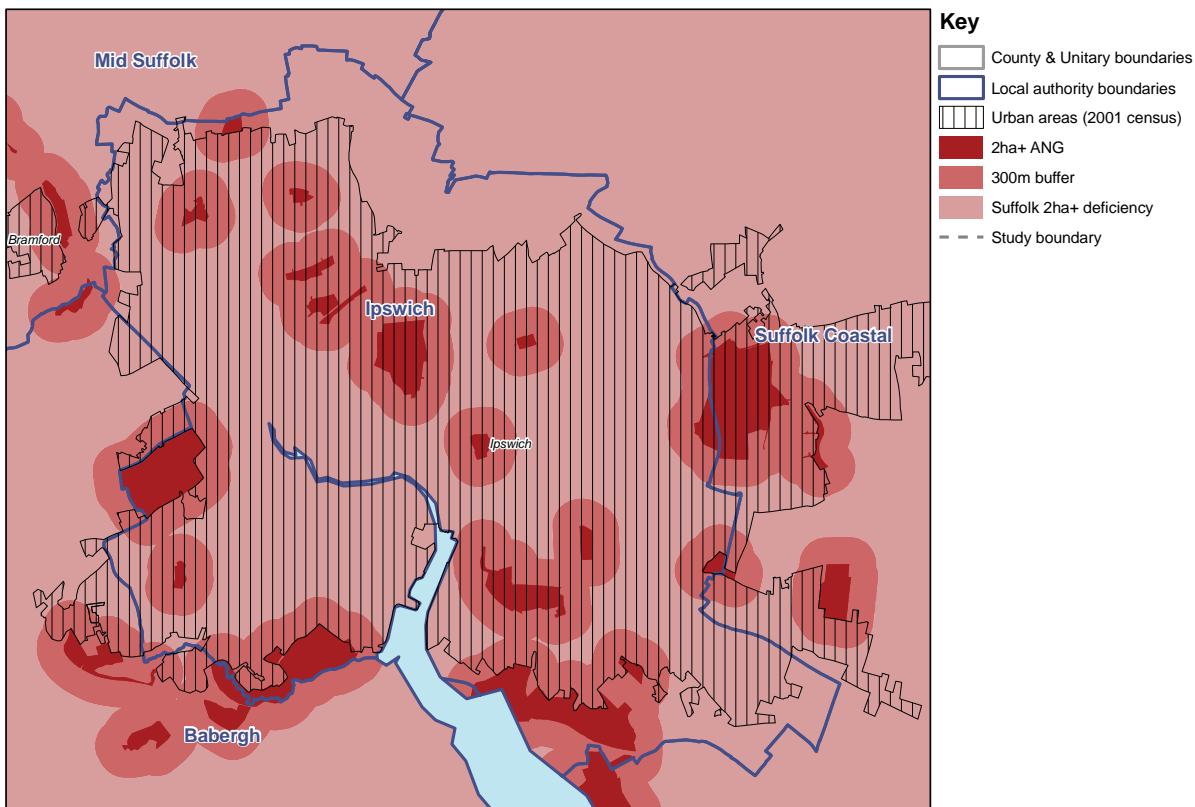
Ipswich is the smallest of the local authorities but has an above average proportion of its area made up by ANG. Ipswich were able to provide open space data and this undoubtedly contributed to the above average results at the 2ha+/300m and 20ha+/2km levels of analysis. However, when considering the 100ha+/5km and 500ha+/10km levels it can be seen in Plans 6c and 6d that Ipswich has no ANG provision at all. Table 6 shows that Ipswich has a relatively low proportion of households meeting none of the ANGSt.

Table 6 ANGSt analysis results for Ipswich

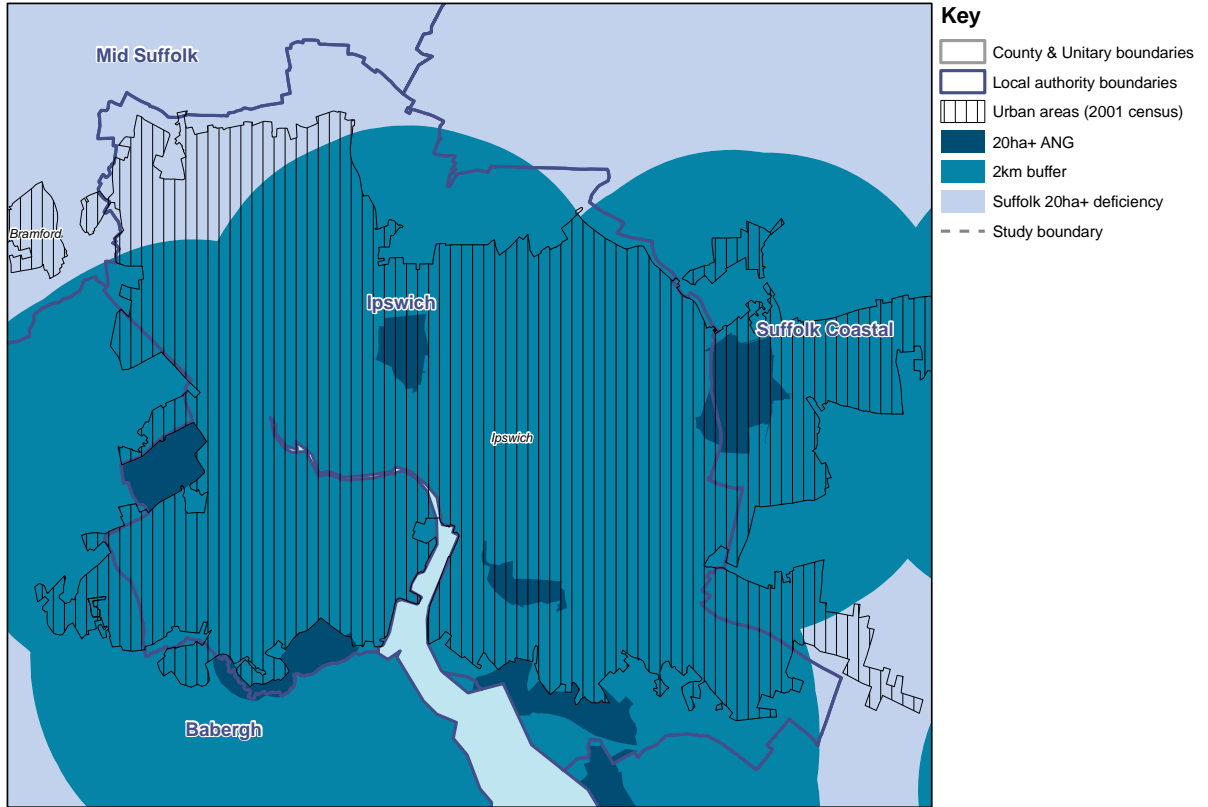
Local Planning Authority	Number of households*	% of households					
		within 300m of a 2ha+ site	within 2km of a 20ha+ site	within 5km of a 100ha+ site	within 10km of a 500ha+ site	meeting all the ANGSt (%)	meeting none of the ANGSt (%)
Ipswich	60104	35.0	94.3	0.0	0.0	0.0	3.0
Suffolk averages	337001.0	18.9	45.9	25.9	28.3	3.4	32.9

*Estimate from 2005 AddressPoint data checked against 2001 Census data

Plan 6a Accessible natural greenspace provision (2ha and above)

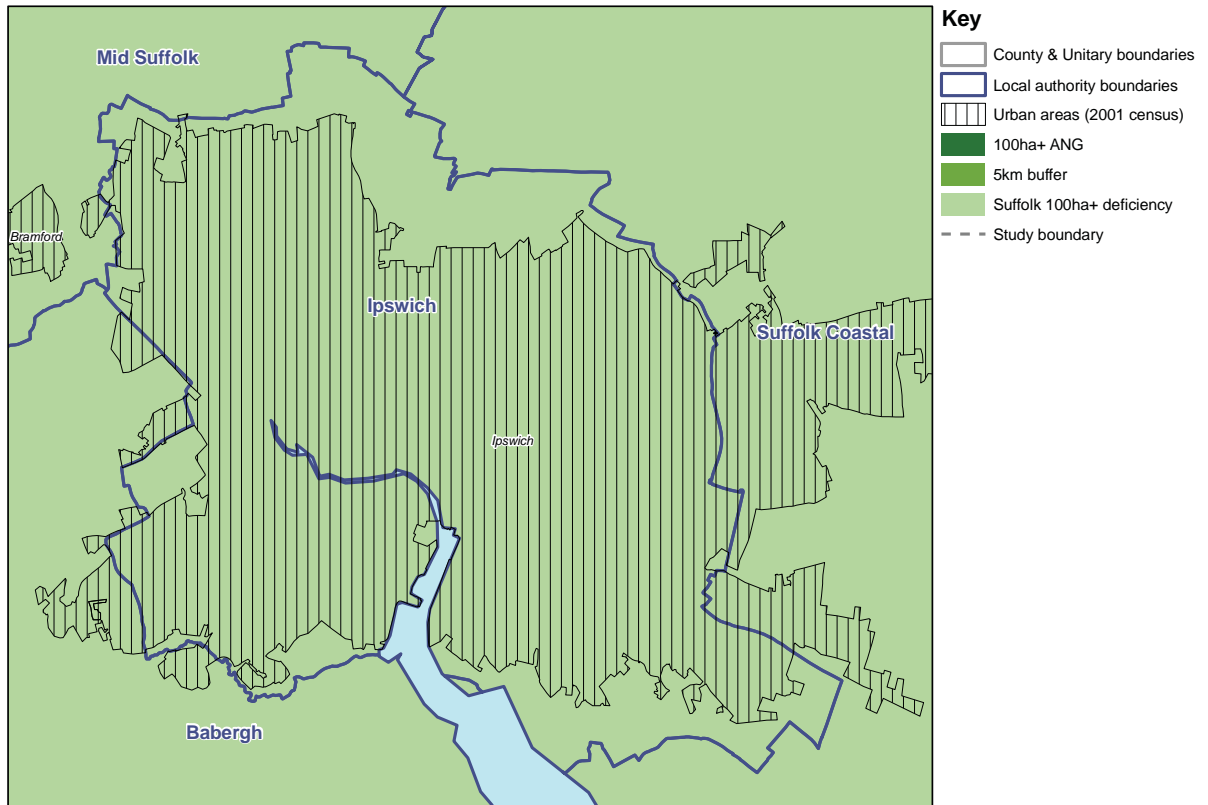


Plan 6b Accessible natural greenspace provision (20ha and above)

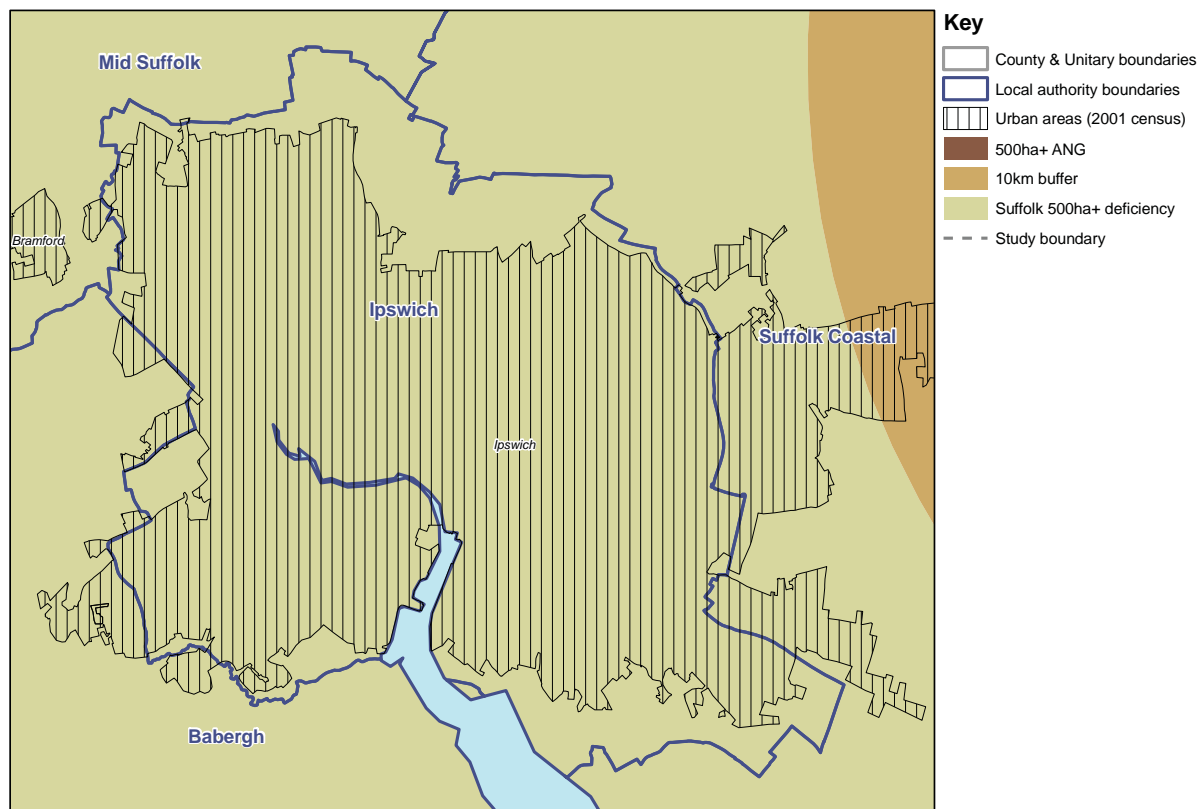


18

Plan 6c Accessible natural greenspace provision (100ha and above)



Plan 6d Accessible natural greenspace provision (500ha and above)



Mid Suffolk

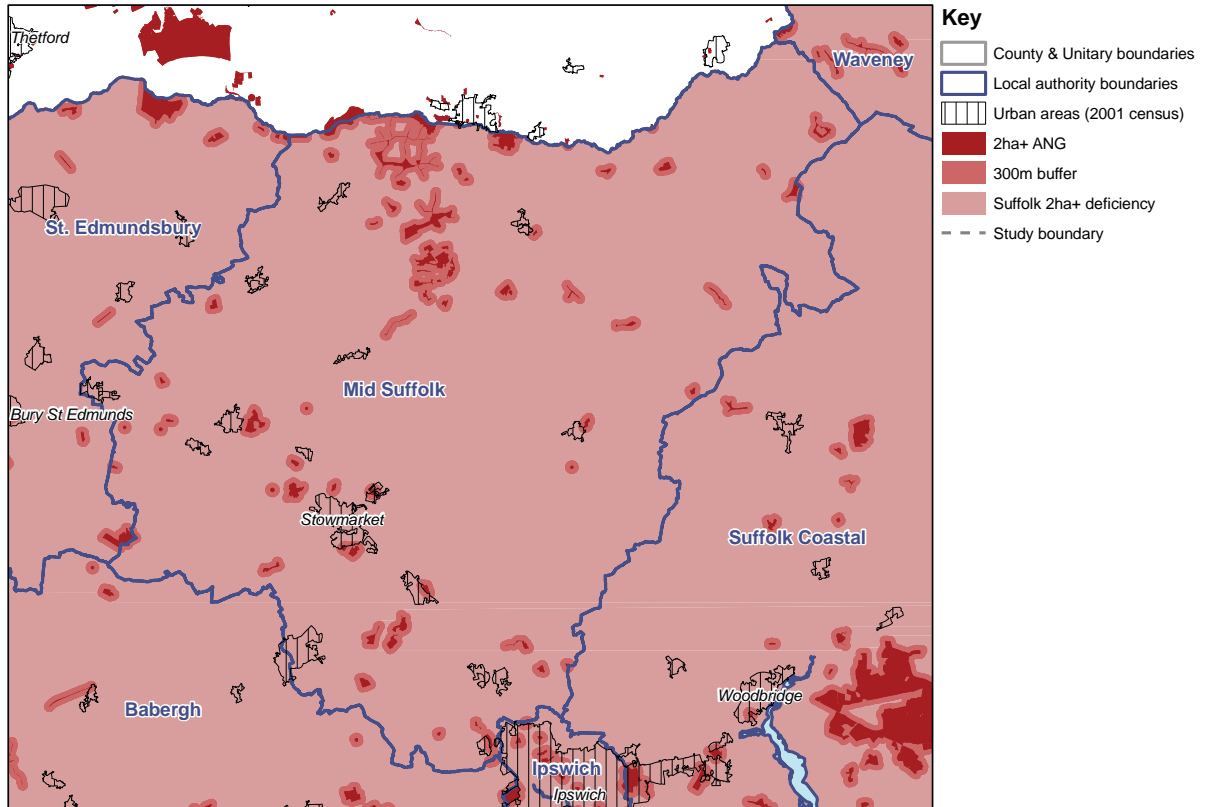
Mid Suffolk has a below average proportion of its area made up by ANG at 1%. Mid Suffolk also were unable to provide any PPG17 data. This has likely contributed to Mid Suffolk performing less well when compared to the county average at all levels of ANGSt analysis. At 64.6% Mid Suffolk has the highest proportion of households meeting none of the ANGSt. At all levels Mid Suffolk's main urban area of Stowmarket is under provisioned.

Table 7 ANGSt analysis results for Mid Suffolk

Local Planning Authority	Number of households*	% of households					
		within 300m of a 2ha+ site	within 2km of a 20ha+ site	within 5km of a 100ha+ site	within 10km of a 500ha+ site	meeting all the ANGSt (%)	meeting none of the ANGSt (%)
Mid Suffolk	42456	11.8	25.1	7.4	3.6	0.5	64.6
Suffolk averages	337001.0	18.9	45.9	25.9	28.3	3.4	32.9

*Estimate from 2005 AddressPoint data checked against 2001 Census data

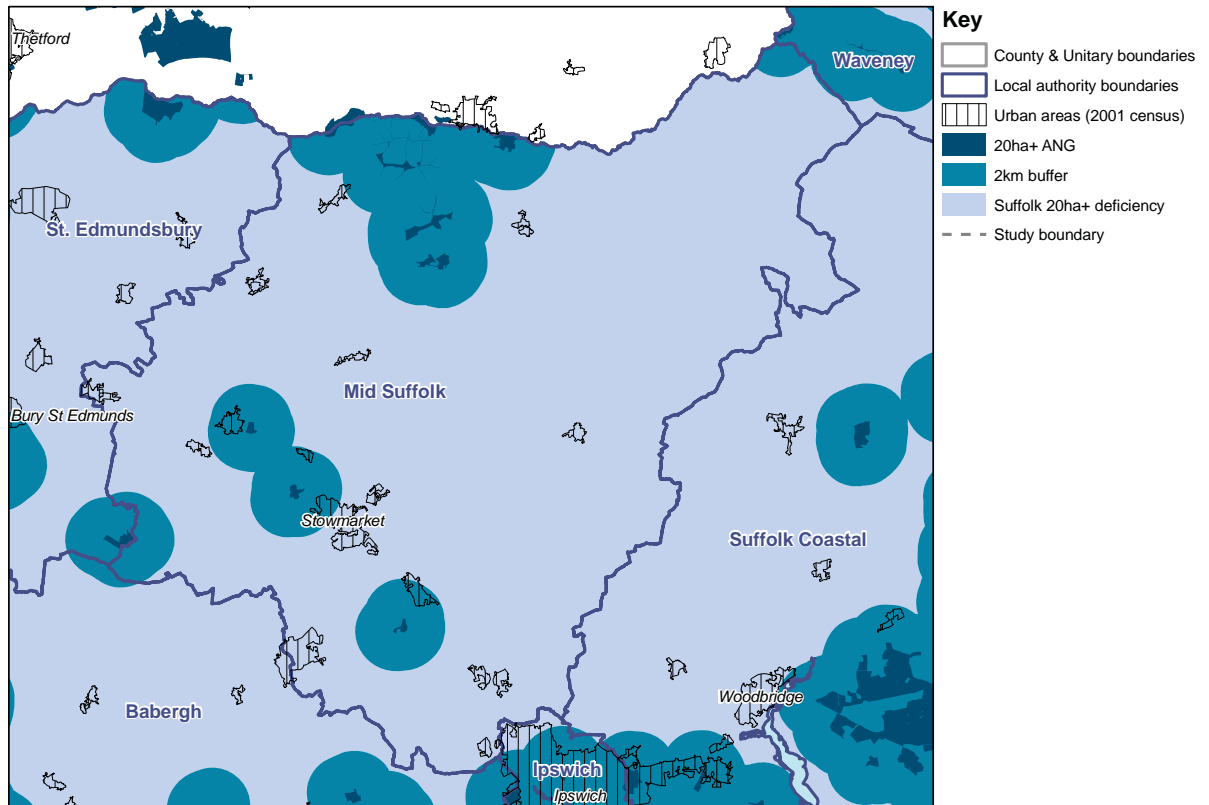
Plan 7a Accessible natural greenspace provision (2ha and above)



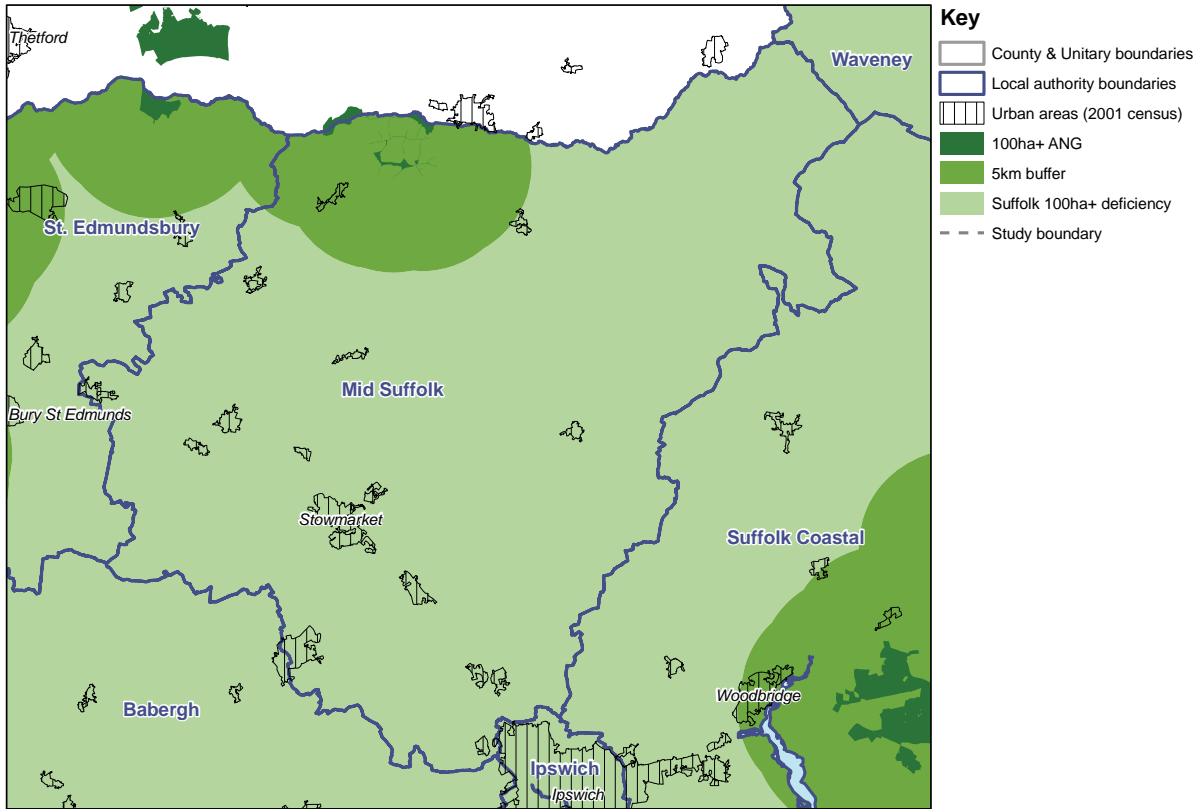
20

Analysis of Accessible Natural Greenspace Provision for Suffolk

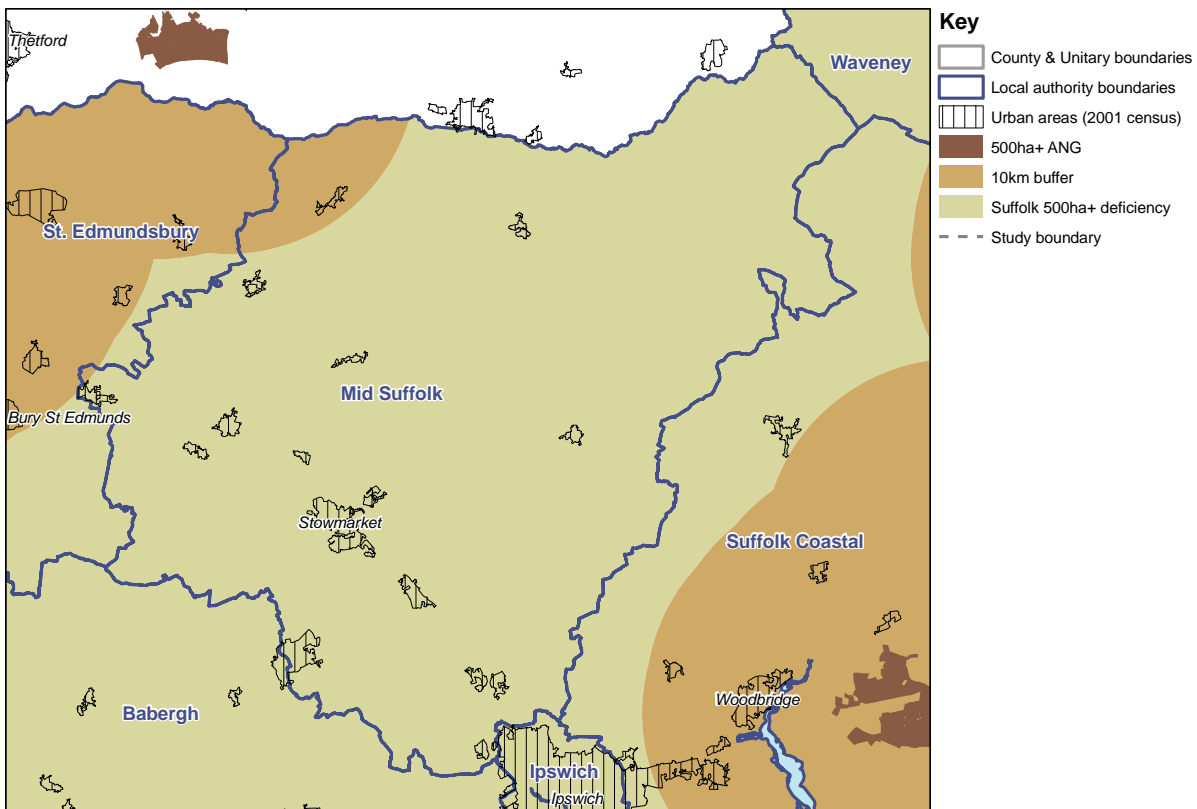
Plan 7b Accessible natural greenspace provision (20ha and above)



Plan 7c Accessible natural greenspace provision (100ha and above)



Plan 7d Accessible natural greenspace provision (500ha and above)



St Edmundsbury

St Edmundsbury has a near average proportion of its area made up by ANG, however they were unable to provide any PPG17 data. This may explain (in part) the results in Table 8 for the 2ha+/300m and 20ha+/2km levels which are both below the county average. The supply of PPG17 sites elsewhere has generally added to the number of small sites analysed at these levels.

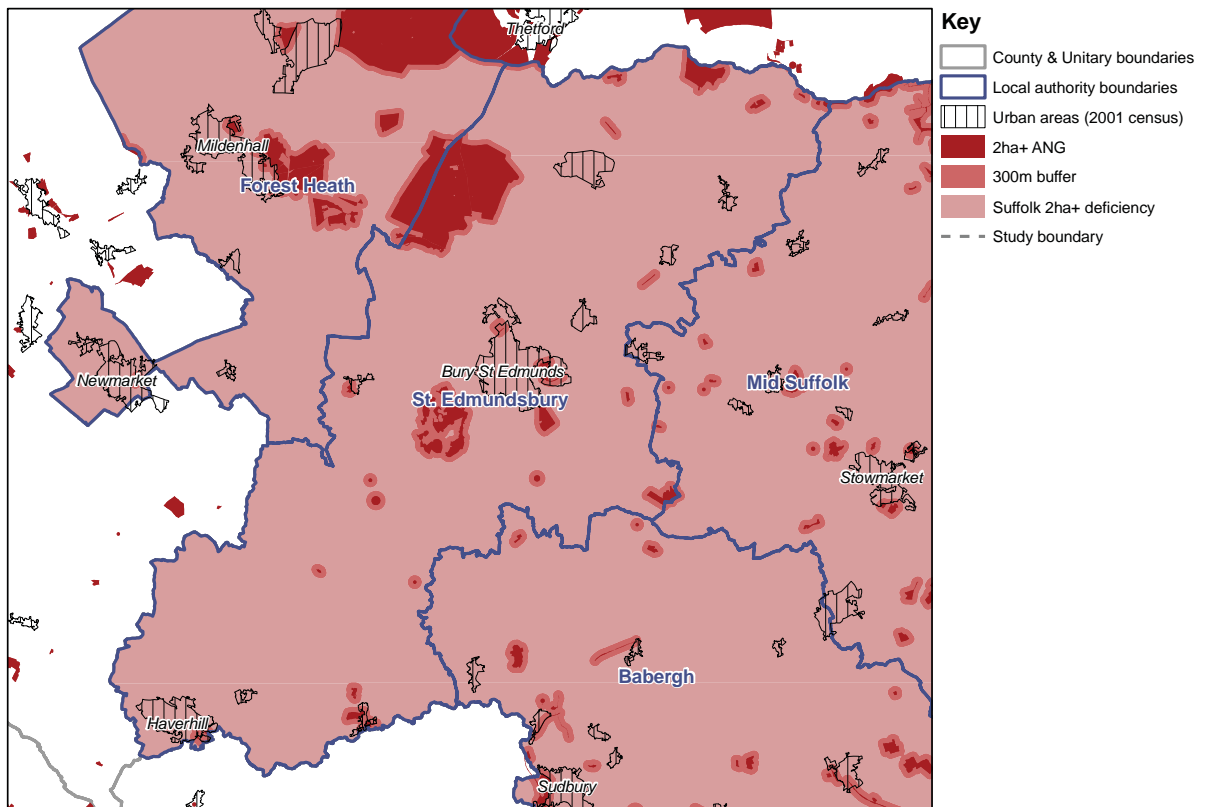
As can be seen in Plans 8c and 8d however, St Edmundsbury performs better than the county averages, with ANG sites in the centre and north west of the borough respectively, providing ANG for the main urban area of Bury St Edmunds. St Edmundsbury has a below average proportion of households meeting all the ANGSt and a comparable result for households meeting none of the ANGSt.

Table 8 ANGSt analysis results for St Edmundsbury

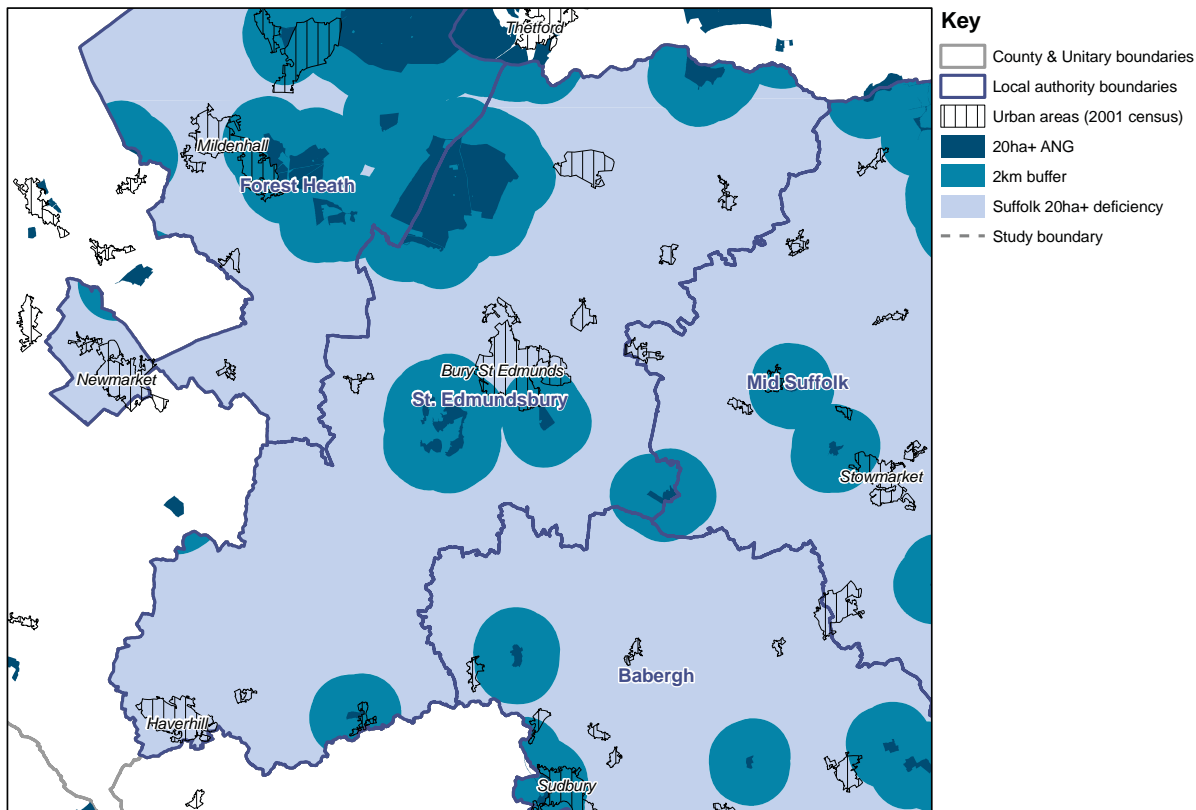
Local Planning Authority	Number of households*	% of households					
		within 300m of a 2ha+ site	within 2km of a 20ha+ site	within 5km of a 100ha+ site	within 10km of a 500ha+ site	meeting all the ANGSt (%)	meeting none of the ANGSt (%)
St Edmundsbury	48511	11.8	19.6	47.7	59.8	1.9	31.4
Suffolk averages	337001.0	18.9	45.9	25.9	28.3	3.4	32.9

*Estimate from 2005 AddressPoint data checked against 2001 Census data

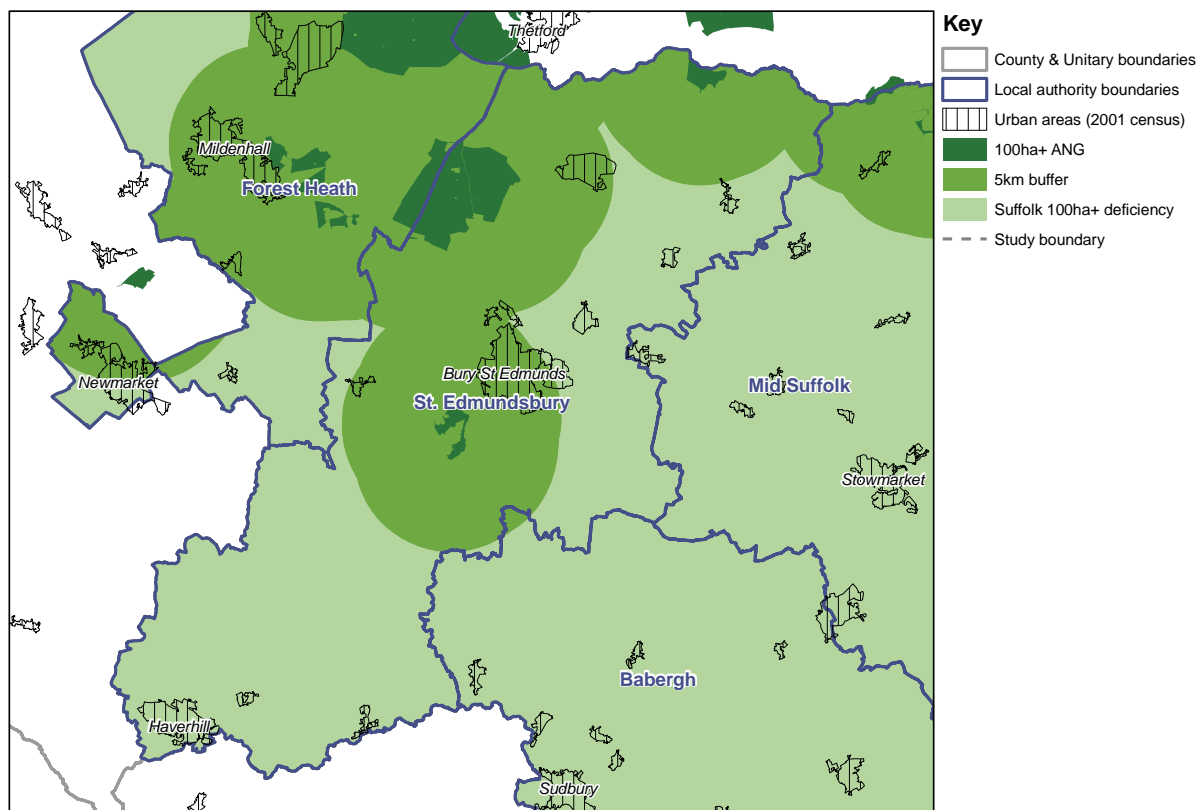
Plan 8a Accessible natural greenspace provision (2ha and above)



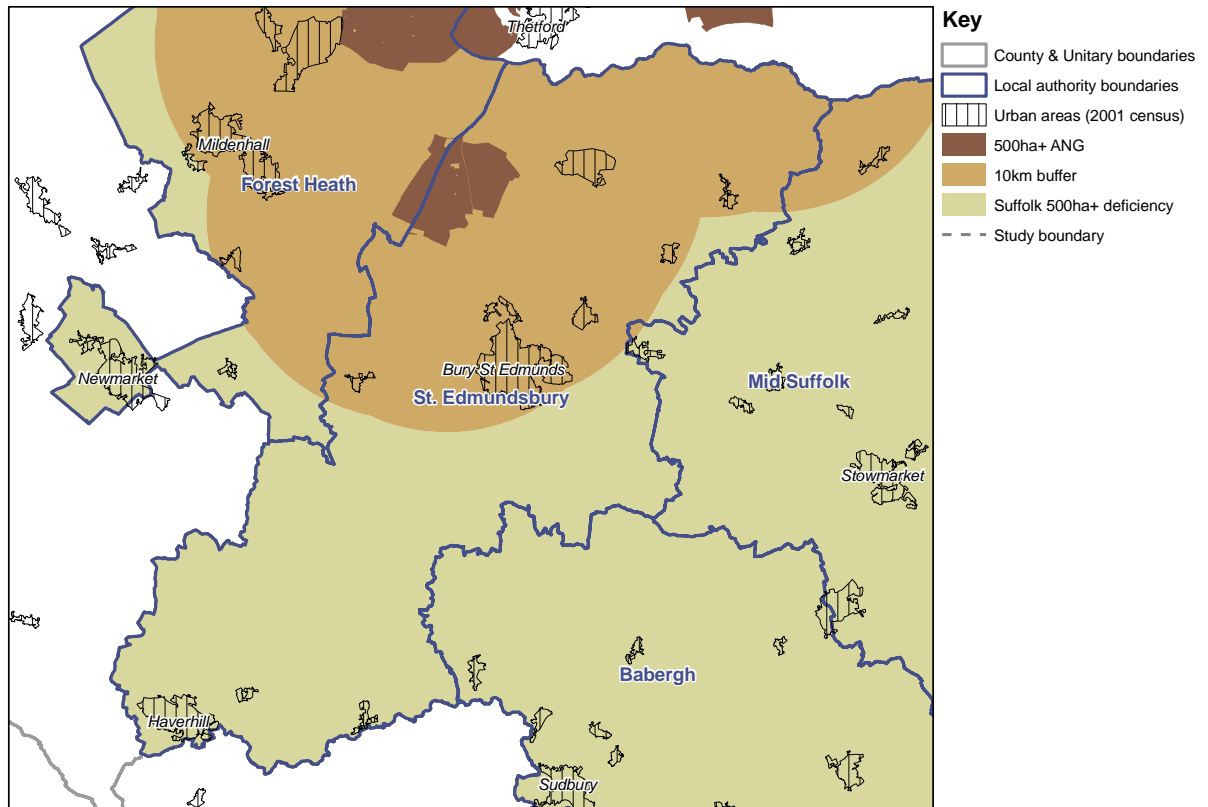
Plan 8b Accessible natural greenspace provision (20ha and above)



Plan 8c Accessible natural greenspace provision (100ha and above)



Plan 8d Accessible natural greenspace provision (500ha and above)



24

Suffolk Coastal

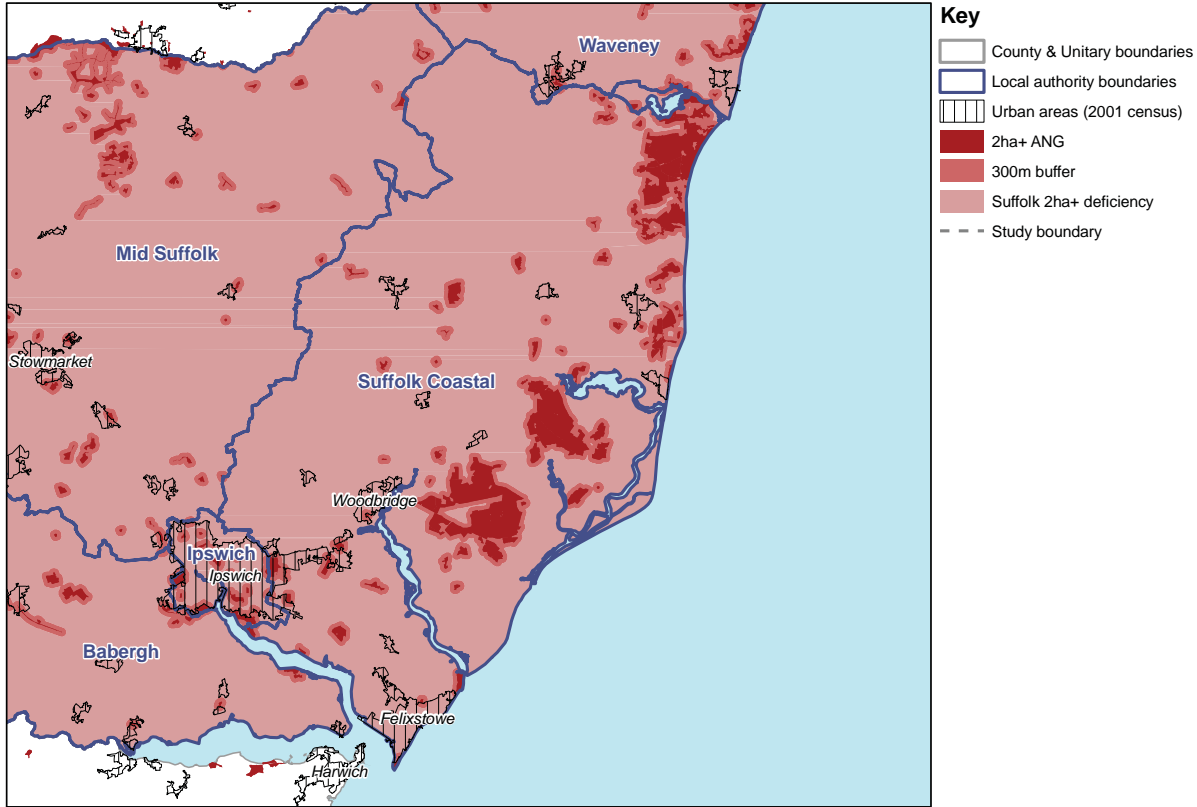
Suffolk Coastal has an above average proportion of its area made up of ANG. Suffolk Coastal were unable to provide any PPG17 data. This may in part explain the below average result for the 2ha+/300m analysis. However the presence of ANG sites on the boundary with Ipswich and more generally the large Forestry Commission forests means that Suffolk Coastal performs above average at the 20ha+/2km, 100ha+/5km and 500ha+/10km levels. Suffolk Coastal has an above average proportion of households meeting all the ANGSt and a below average proportion meeting none of the ANGSt.

Table 9 ANGSt analysis results for Suffolk Coastal

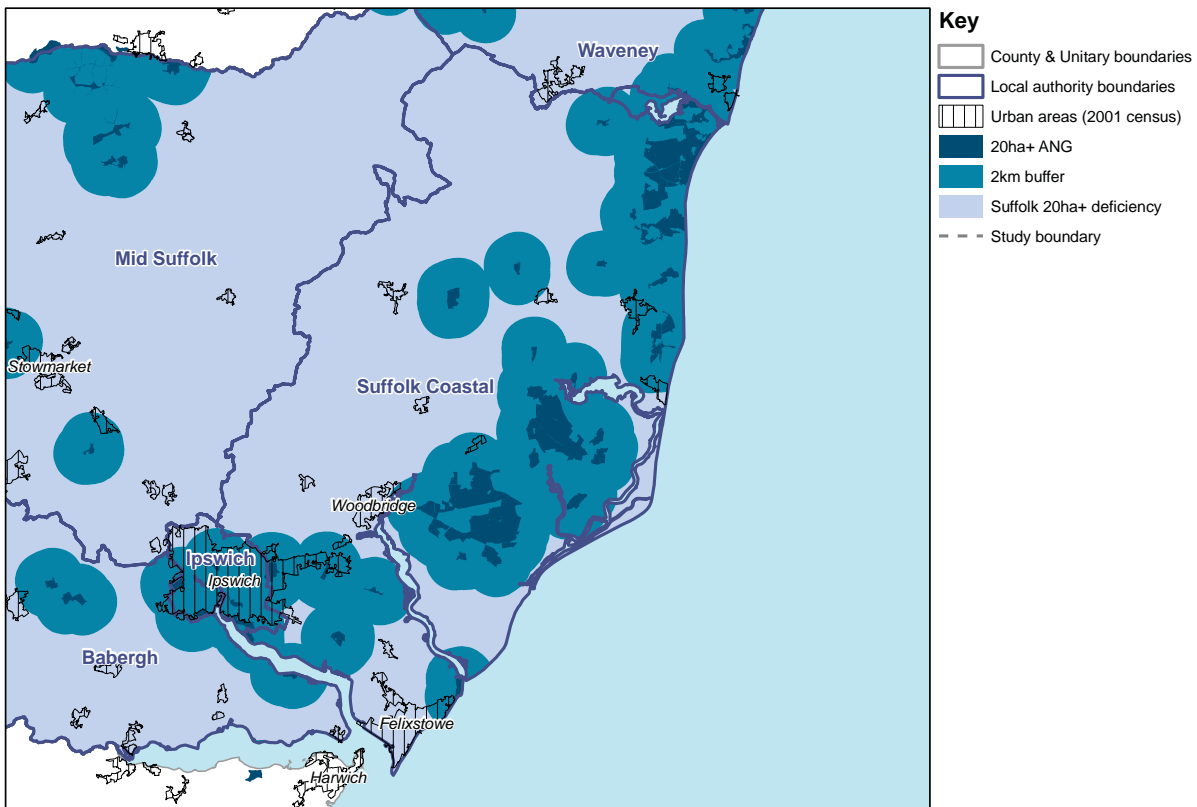
Local Planning Authority	Number of households*	% of households					
		within 300m of a 2ha+ site	within 2km of a 20ha+ site	within 5km of a 100ha+ site	within 10km of a 500ha+ site	meeting all the ANGSt (%)	meeting none of the ANGSt (%)
Suffolk Coastal	60252	13.5	47.3	34.8	60.3	5.5	27.1
Suffolk averages	337001.0	18.9	45.9	25.9	28.3	3.4	32.9

*Estimate from 2005 AddressPoint data checked against 2001 Census data

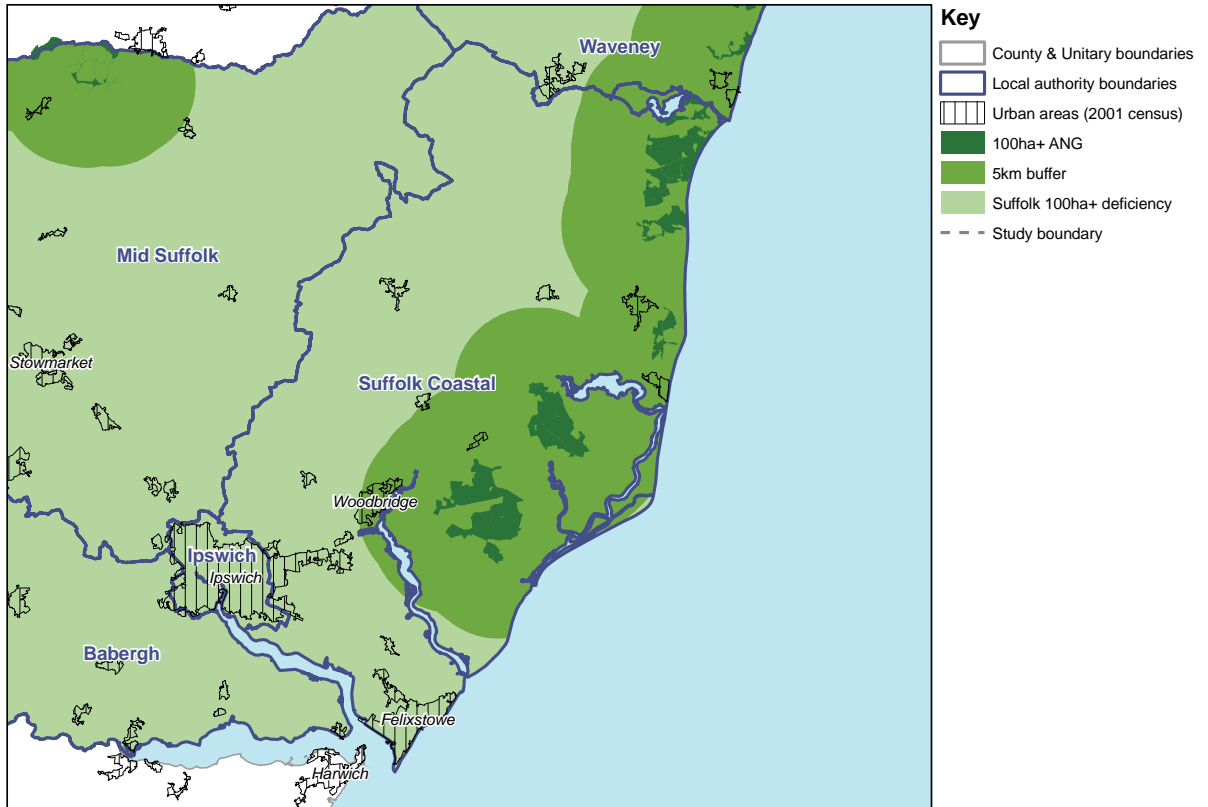
Plan 9a Accessible natural greenspace provision (2ha and above)



Plan 9b Accessible natural greenspace provision (20ha and above)

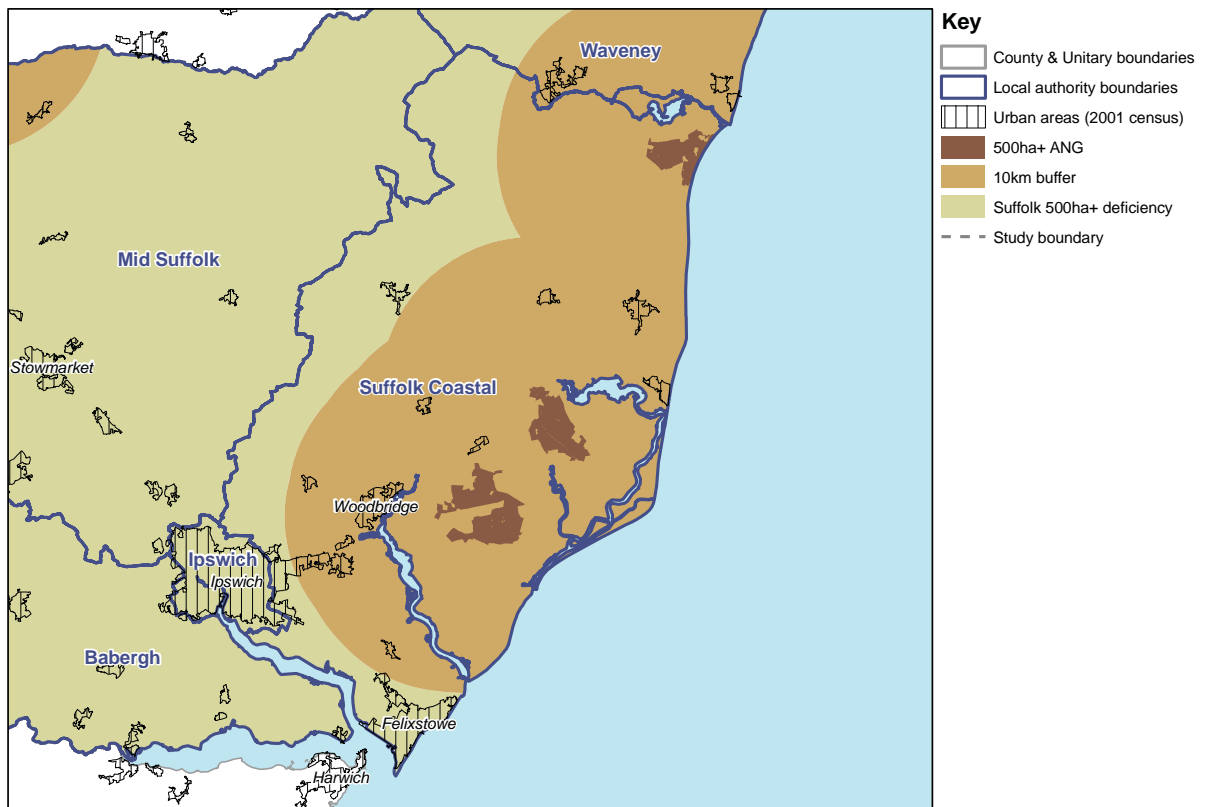


Plan 9c Accessible natural greenspace provision (100ha and above)



26

Plan 9d Accessible natural greenspace provision (500ha and above)



Waveney

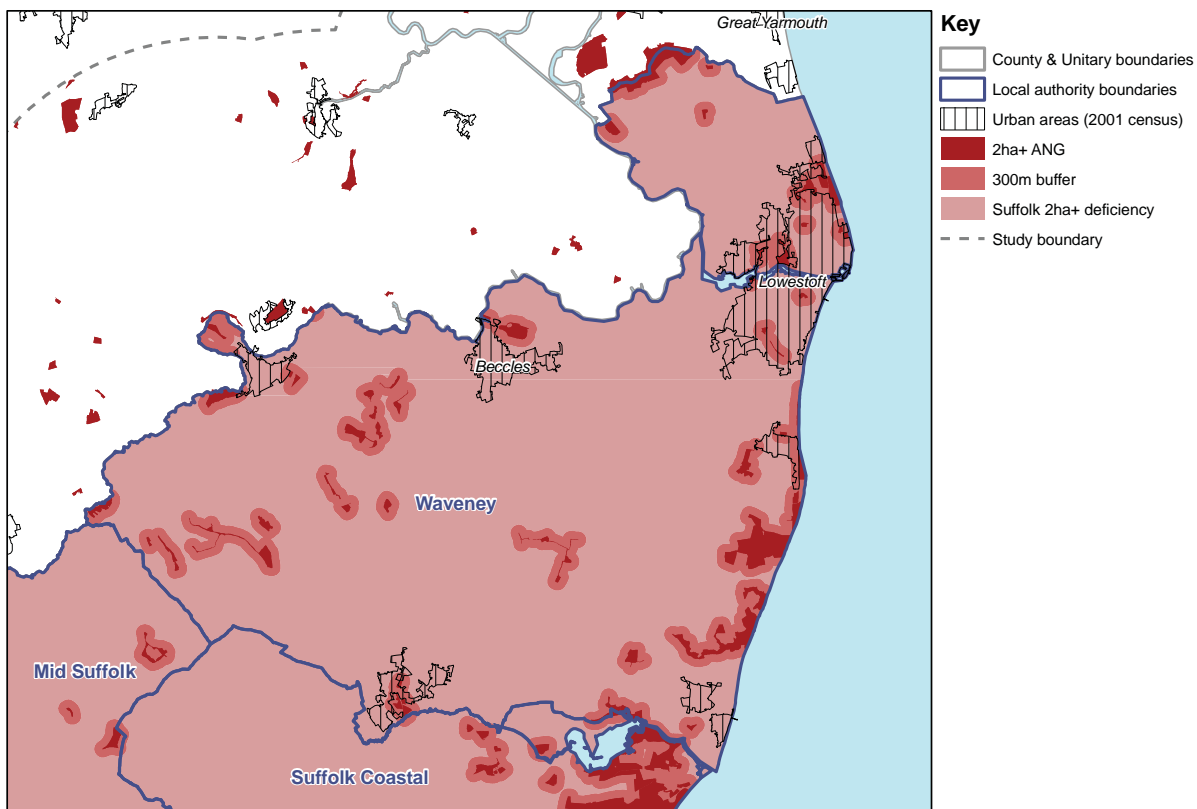
Waveney has a below average proportion of its area made up by ANG. Waveney did however provide open space data. As such Waveney performs slightly above average at the 2ha+/300m and 20ha+/2km levels. As can be seen in Plans 10c and 10d, the ANG provision at the 100ha+/5km and 500ha+/10km levels does not cater for the main urban area of Lowestoft. Waveney performs below the county average at these levels of analysis. Waveney has a below average proportion of households meeting all the ANGSt and a slightly above average proportion meeting none of the ANGSt.

Table 10 ANGSt analysis results for Waveney

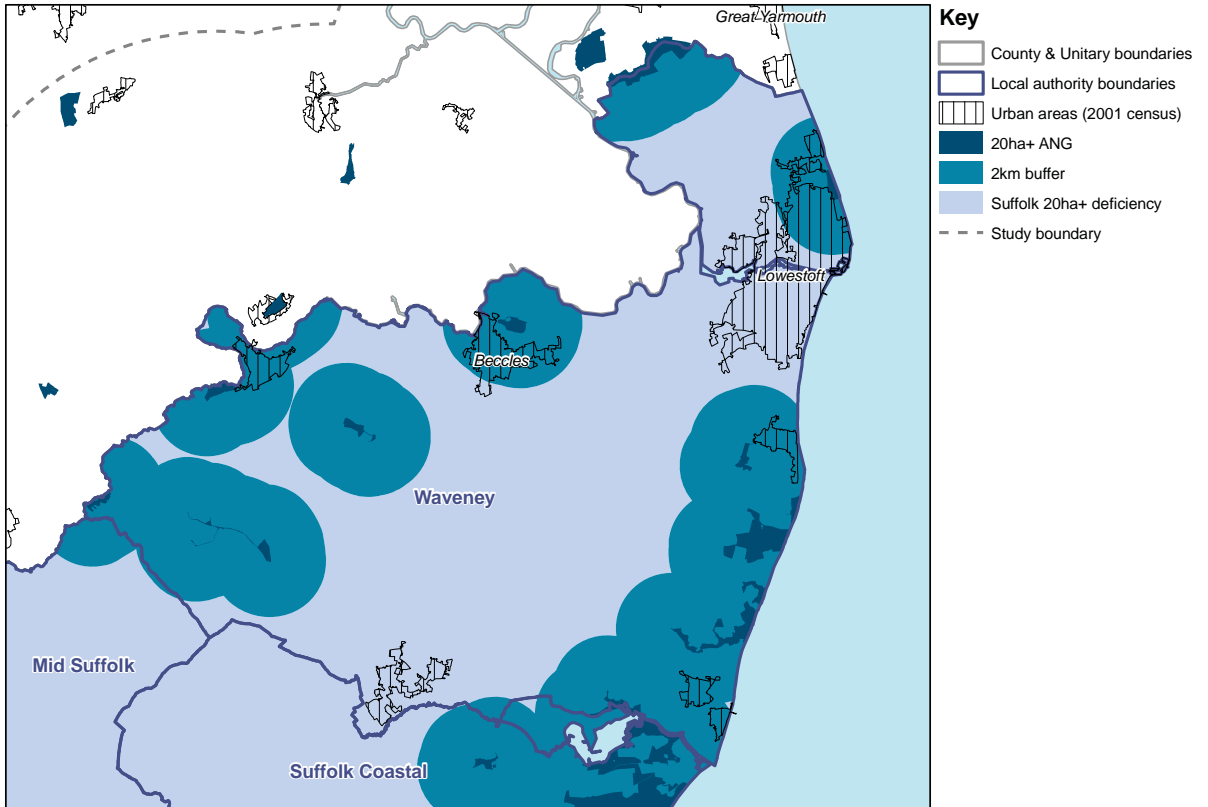
Local Planning Authority	Number of households*	% of households					
		within 300m of a 2ha+ site	within 2km of a 20ha+ site	within 5km of a 100ha+ site	within 10km of a 500ha+ site	meeting all the ANGSt (%)	meeting none of the ANGSt (%)
Waveney	57270	21.8	47.2	13.3	13.2	0.1	34.8
Suffolk averages	337001.0	18.9	45.9	25.9	28.3	3.4	32.9

*Estimate from 2005 AddressPoint data checked against 2001 Census data

Plan 10a Accessible natural greenspace provision (2ha and above)

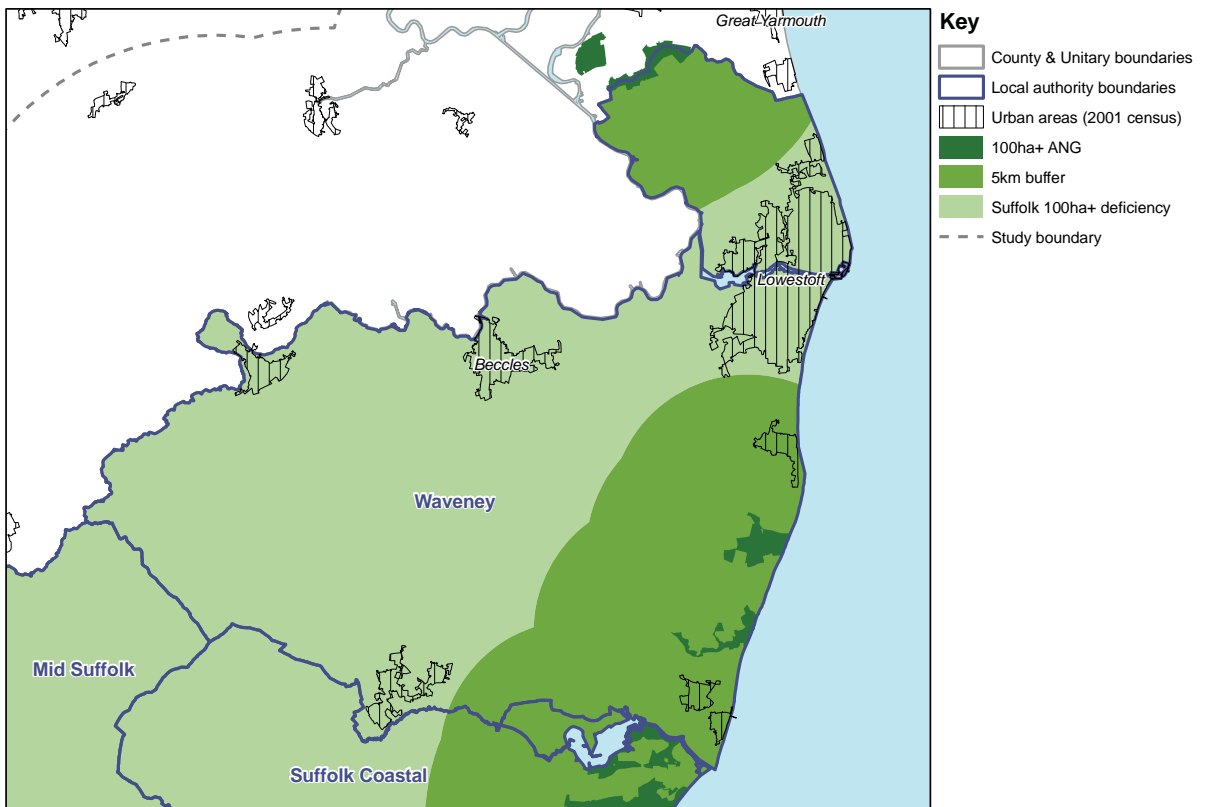


Plan 10b Accessible natural greenspace provision (20ha and above)

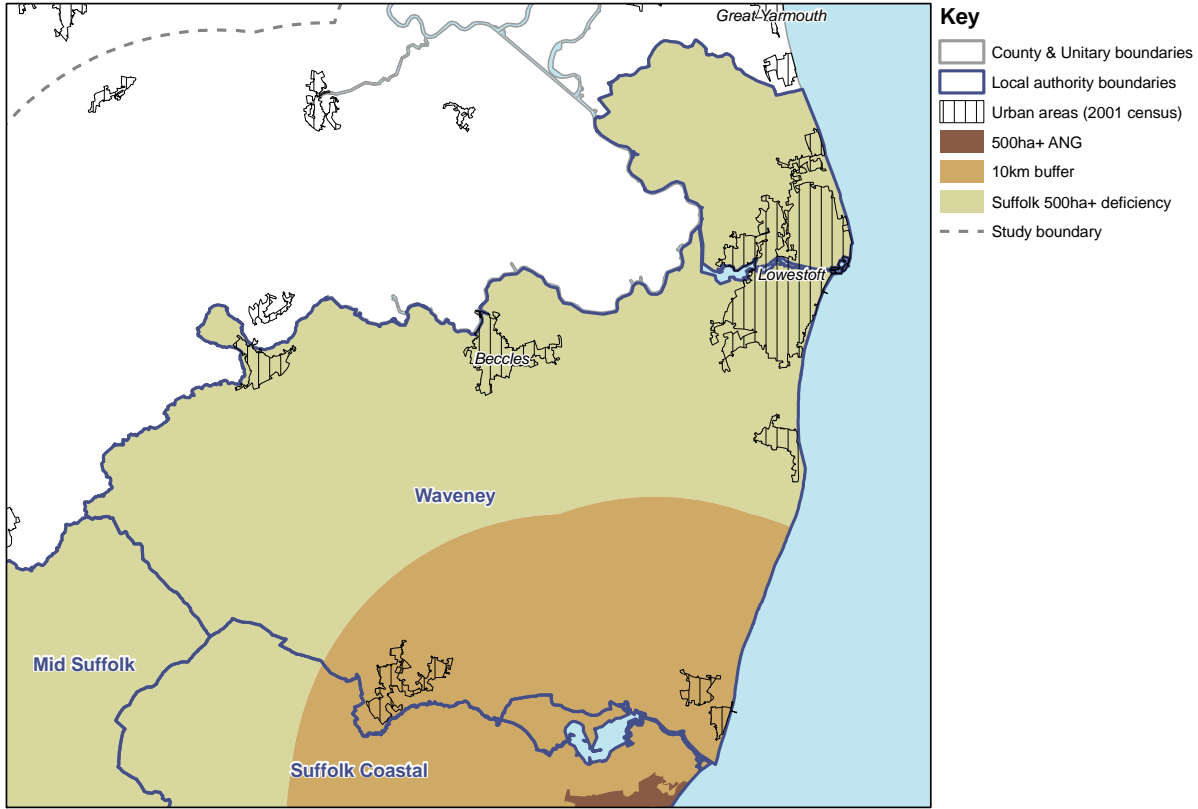


28

Plan 10c Accessible natural greenspace provision (100ha and above)



Plan 10d Accessible natural greenspace provision (500ha and above)



Conclusions

This analysis highlights the provision of accessible natural greenspace within Suffolk, according to the Accessible Natural Greenspace Standard. The key findings of the Suffolk ANGSt analysis are summarised as follows:

The report shows that:

31.7% of households have access to an accessible natural greenspace of at least 2 hectares within 300 metres

45.9% of households have access to an accessible natural greenspace of at least 20 hectares within 2 kilometres

25.9% of households have access to an accessible natural greenspace of at least 100 hectares within 5 kilometres

28.3% of households have access to an accessible natural greenspace of at least 500 hectares within 10 kilometres

3.4% of households have access to all the areas of accessible natural greenspace within the standard

32.9% do not have access to any of the accessible natural greenspace within the standard

Overall the results for Suffolk are reasonably comparable to the analysis undertaken for Norfolk but perform less well against Hertfordshire and Essex – which was the pilot study. 3.4% of households in Suffolk have all of the ANGSt met in comparison to 6.7% for Hertfordshire, 3.2% for Norfolk and 7% for Essex. 32.9% of households have none of the ANGSt met which is comparable to Norfolk at 29.7% and particularly high in comparison to 6.4% for Hertfordshire, and 14% for Essex.

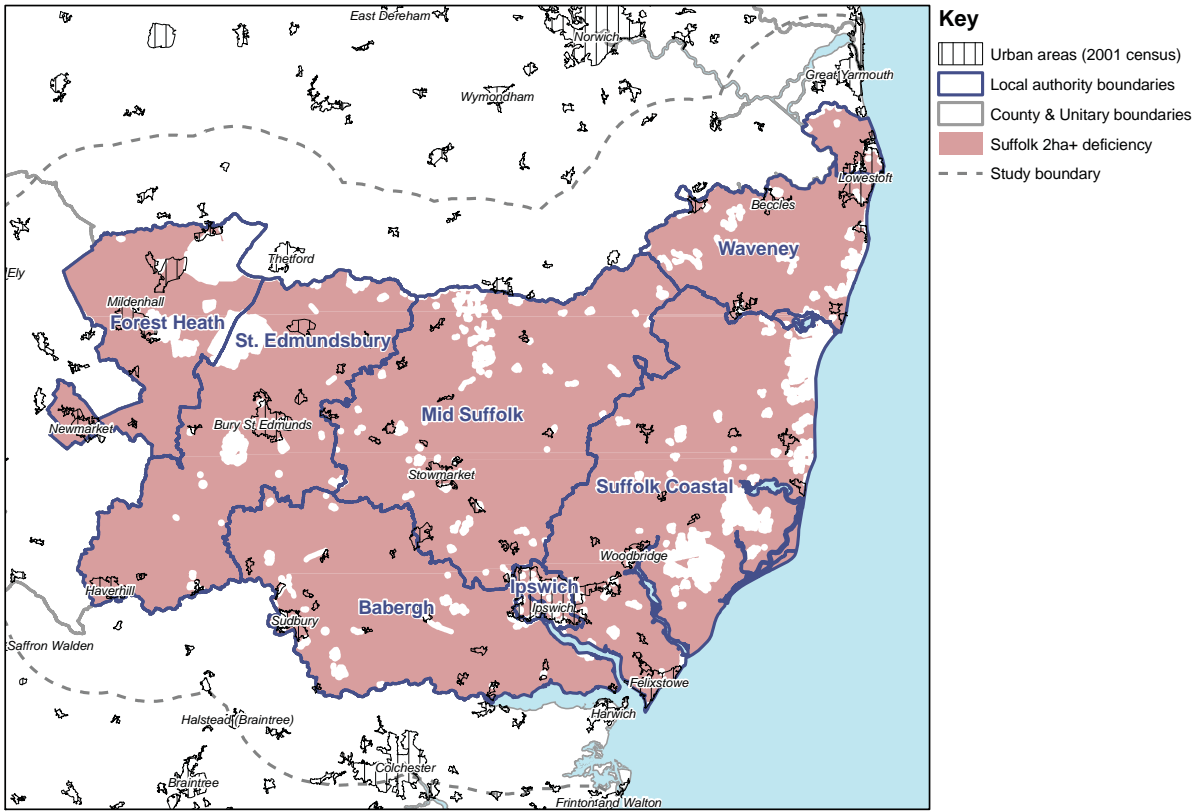
The average proportion of households meeting the lowest of the ANGSt in Suffolk is 18.9%. Three out of the seven local authorities in Suffolk are below this figure, with no local authority scoring over 35%. At the 20ha+ and 100ha+ levels the proportions of households meeting ANGSt are relatively higher at averages of 45.9% and 25.9% respectively.

At the 500 hectare level Babergh and Ipswich have no ANG provision. Forest Heath, St. Edmundsbury, and Suffolk Coastal perform best at this regional level.

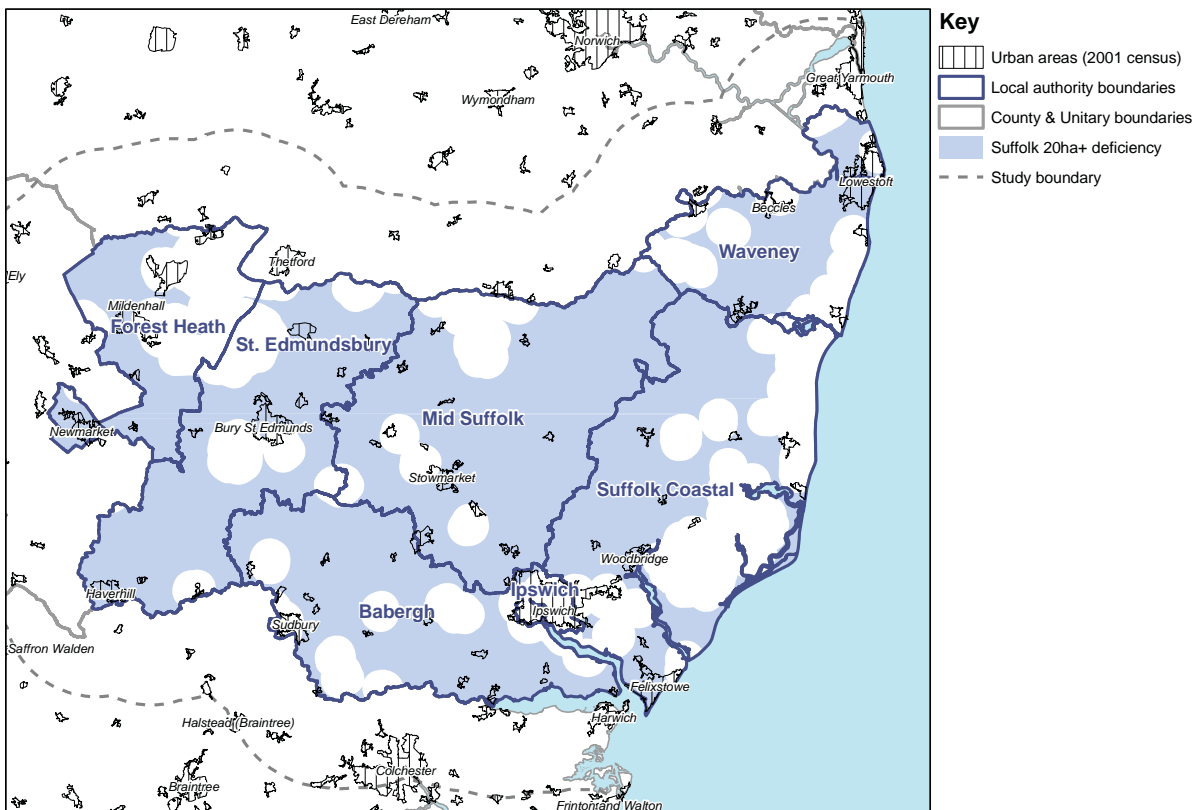
This ANGSt analysis shows that the first priorities are to address ANG provision in the areas of deficiency highlighted in plans 11a-11d and in particular:

- the provision of 2 hectare sites and above in locations where they will be most effective in meeting the ANG needs of existing populations
- provision of 500 hectare sites within the 'corridor' of deficiency that runs through the centre of the study area from southwest to northeast covering most of Babergh, Mid Suffolk, Ipswich and to a lesser extent; Forest Heath, Suffolk Coastal, St. Edmundsbury and Waveney.

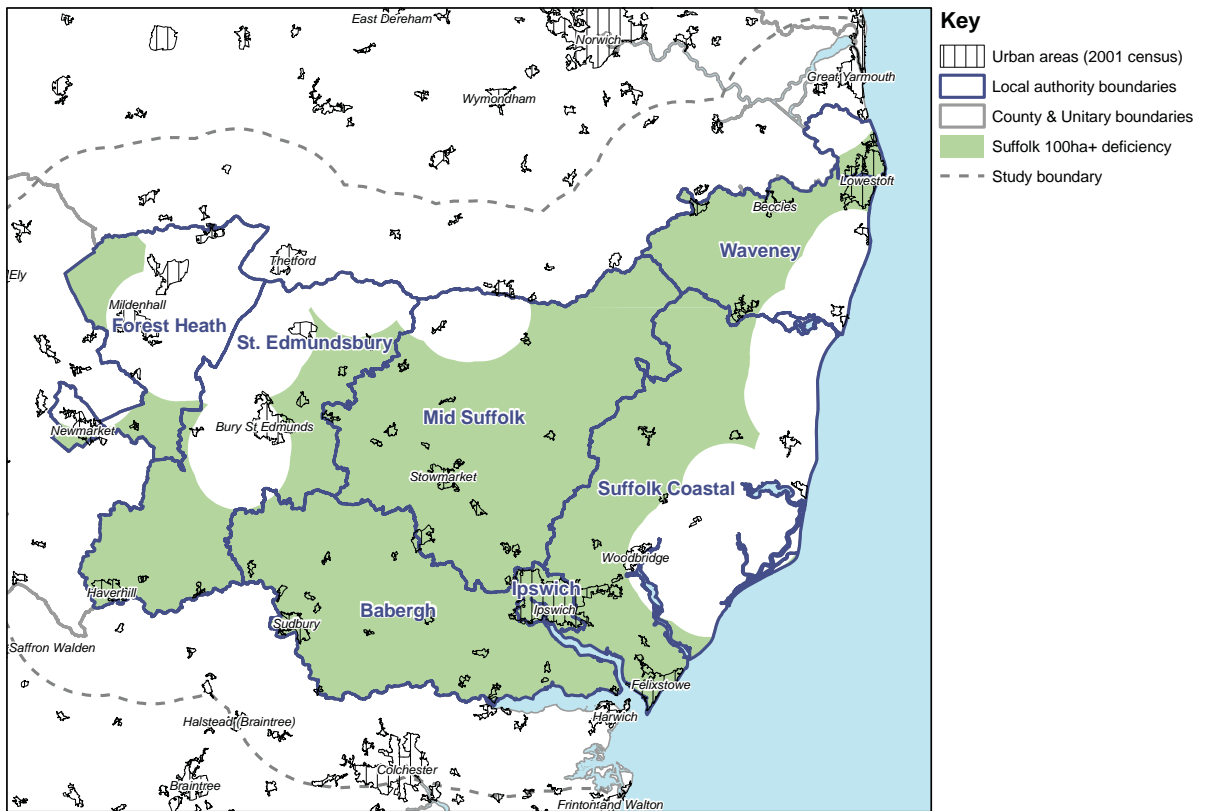
Plan 11a Highlights those areas with no accessible natural greenspace provision at the 2ha level of ANGSt analysis



Plan 11b Highlights those areas with no accessible natural greenspace provision at the 20ha level of ANGSt analysis

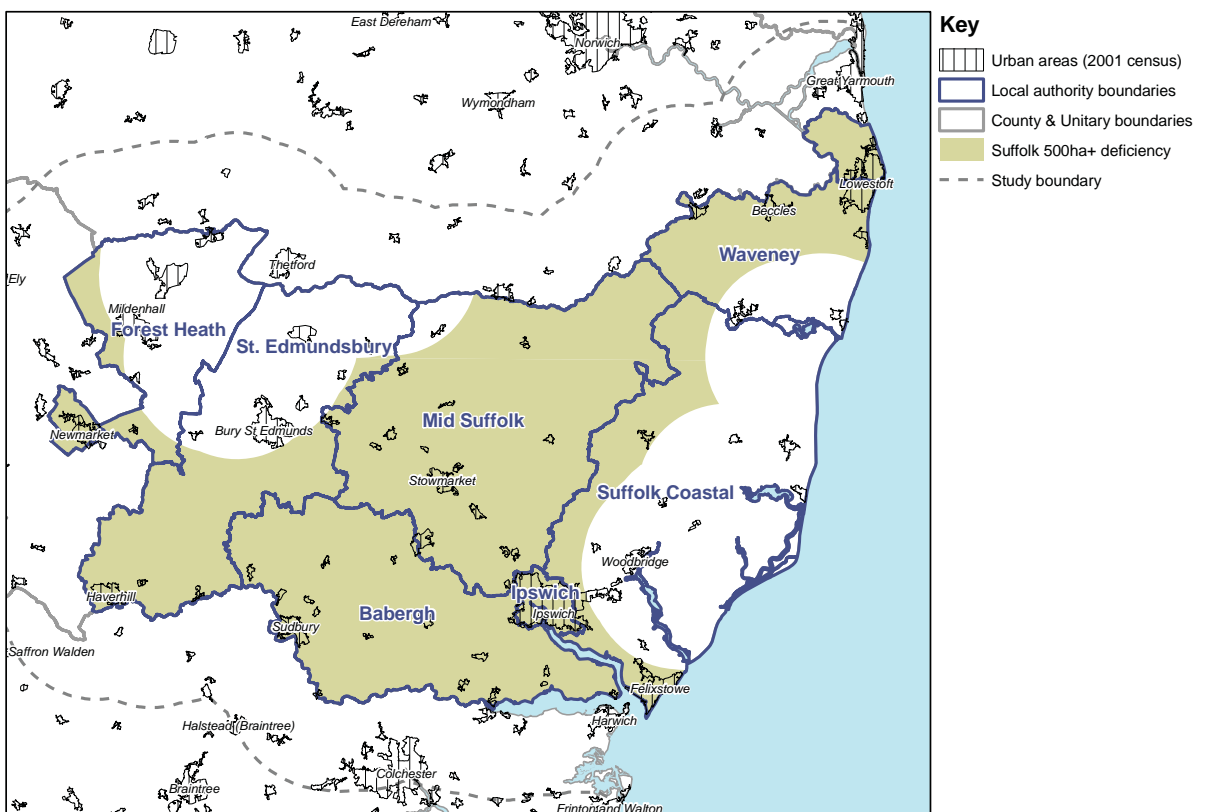


Plan 11c Highlights those areas with no accessible natural greenspace provision at the 100ha level of ANGSt analysis



32

Plan 11d Highlights those areas with no accessible natural greenspace provision at the 500ha level of ANGSt analysis



Bibliography

- East of England Biodiversity Forum (2008) East of England Biodiversity Delivery Plan 2008-2015. Cambridge
- Handley, J. et al (2003a) English Nature Research Report 526: Accessible Natural Green Space Standards in Towns and Cities: A Review and Toolkit for their Implementation. Peterborough
- Handley, J. et al (2003b) Providing Accessible Natural Greenspace in Towns and Cities: A Practical Guide to Assessing the Resource and Implementing Local Standards for Provision. English Nature. Peterborough
- McKernan, P. & Grose, M. (2007) An analysis of accessible natural greenspace provision in the South East. Accessed from www.forestry.gov.uk/forestry/inf-d-7d4mgd
- ODPM [now CLG] (2002a) Planning Policy Guidance 17: Planning for open space, sport and recreation. London
- ODPM [now CLG] (2002b) Assessing needs and opportunities a companion guide to PPG17. London
- Natural England (2010) Nature Nearby – Accessible Natural Greenspace Guidance. Accessed from www.naturalengland.org.uk/publications

Contact us

If you would like to know more about Natural England, please contact us at:

Eastbrook
Shaftesbury Road
Cambridge
CB2 8DR

or visit our website
www.naturalengland.org.uk

Natural England is here to conserve and enhance the natural environment, for its intrinsic value, the wellbeing and enjoyment of people and the economic prosperity that it brings.

www.naturalengland.org.uk

© Natural England June 2010

