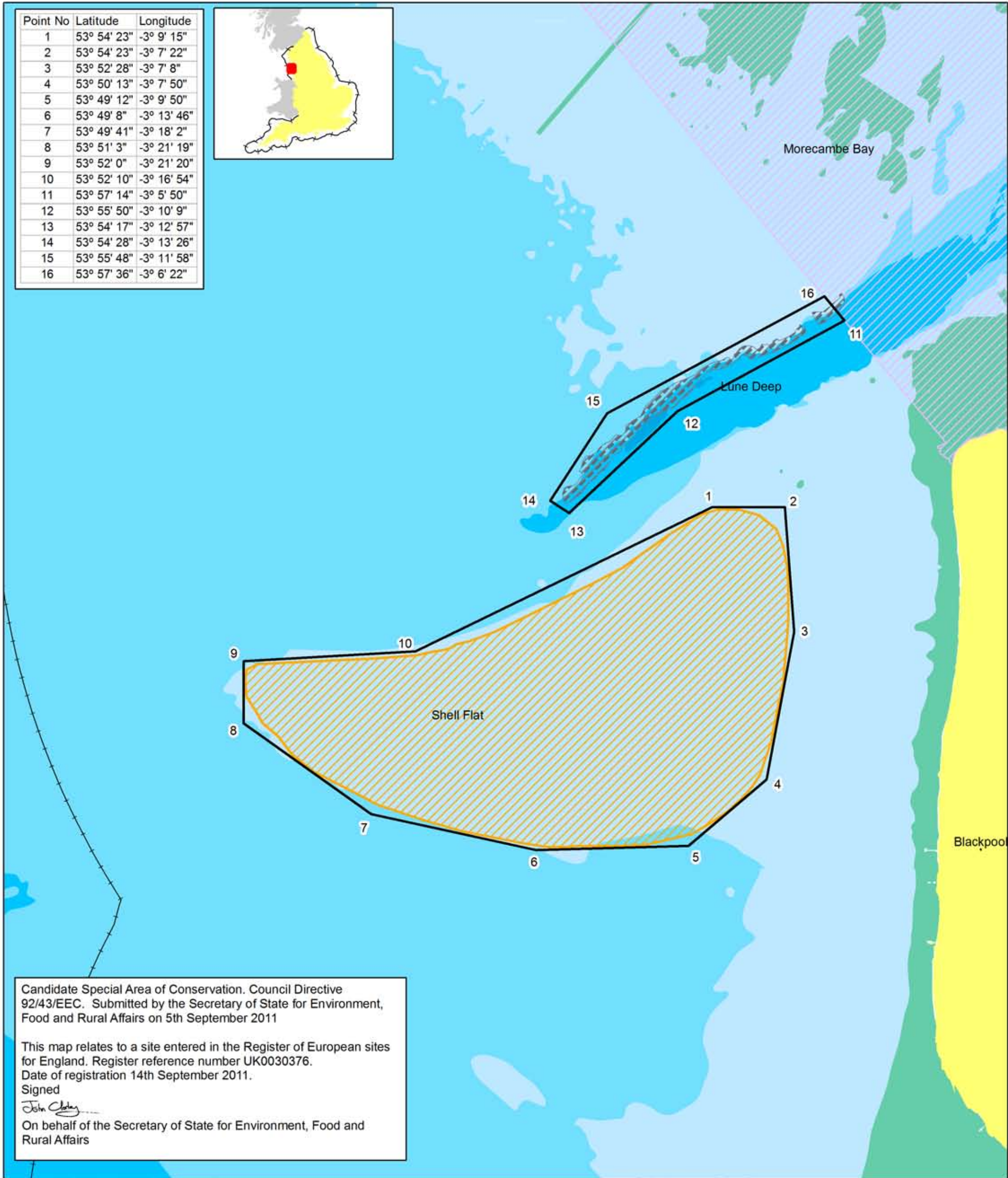


Point No	Latitude	Longitude
1	53° 54' 23"	-3° 9' 15"
2	53° 54' 23"	-3° 7' 22"
3	53° 52' 28"	-3° 7' 8"
4	53° 50' 13"	-3° 7' 50"
5	53° 49' 12"	-3° 9' 50"
6	53° 49' 8"	-3° 13' 46"
7	53° 49' 41"	-3° 18' 2"
8	53° 51' 3"	-3° 21' 19"
9	53° 52' 0"	-3° 21' 20"
10	53° 52' 10"	-3° 16' 54"
11	53° 57' 14"	-3° 5' 50"
12	53° 55' 50"	-3° 10' 9"
13	53° 54' 17"	-3° 12' 57"
14	53° 54' 28"	-3° 13' 26"
15	53° 55' 48"	-3° 11' 58"
16	53° 57' 36"	-3° 6' 22"



Candidate Special Area of Conservation. Council Directive 92/43/EEC. Submitted by the Secretary of State for Environment, Food and Rural Affairs on 5th September 2011

This map relates to a site entered in the Register of European sites for England. Register reference number UK0030376. Date of registration 14th September 2011.

Signed

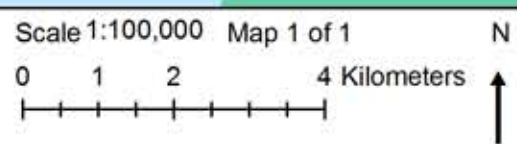
 On behalf of the Secretary of State for Environment, Food and Rural Affairs

candidate Special Area of Conservation
Shell Flat and Lune Deep

- candidate Special Area of Conservation
- Reefs
- Sandbanks which are slightly covered by sea water all the time
- Special Areas of Conservation
- England 12nm Territorial Seas Limit

EU Site Code: UK0030376
 Version number: 2.0
 Longitude: 3° 12' 45" W
 Latitude: 53° 51' 50" N
 Projection: UTM 30N (WGS84)
 Area of SAC: 105.65 sq km
 10565.34 ha

Theme ID: 1452095
 Grid Ref: SD203415
 Version: 9.0
 Plotted: 05/09/2011
 Plot ID: 9.0



Contains information from the Ordnance Survey © Crown Copyright and database right 2011. Ordnance Survey 100022021.
 Contains information from the UK Hydrographic Office © Crown Copyright and/or database rights. Reproduced by permission of the Controller of Her Majesty's Stationery Office and the UK Hydrographic Office (www.ukho.gov.uk).
 Contains UKHO Law of the Sea data © Crown copyright and database right. Map copyright © Natural England 2011.
 NOT TO BE USED FOR NAVIGATION

