



**BalancedSeas**

Delivering Marine Conservation Zones in the South-East

**Balanced Seas  
Marine Conservation Zone Project**

**Final Recommendations**

**Amendments  
December 2011**

## Introduction

This report provides corrections for errors identified in the Selection Assessment Documents submitted for the Final Recommendations for rMCZs and rRAs in September 2011, and any clarifications that are considered essential. It does not include new information or comments on the recommendations.

N.B: It is not considered that any of these amendments would make a significant change to the extent to which targets and criteria have been met. The assessment of progress towards targets as given in the main body of the Final Report has therefore not been revised.

## Selection Assessment Documents

Site	Page	Amendment
<b>Recommended Marine Conservation Zones</b>		
General		There are a number of revisions to the Conservation Objectives, listed by site below. Since the last RSG meeting, Natural England has worked with the project to finalise outstanding conservation objectives, which are shown fully in Annex 1
rMCZ 2 Stour and Orwell	1	Section 1 should state that rRA 22 and rRA 24 are found within this site
rMCZ 3 Blackwater, Crouch, Roach, Colne	1	Section 1 should state that this site contains rRA23 as well as well as rRA 1 and rRA 2  Section 5, Features for protection: A1.3 Low Energy Intertidal Rock and A2.2 Intertidal Sand/ Muddy sand removed as Natural England have confirmed that this is already protected
	3	Boundary of pMCZ revised to reflect correct boundary of rRA 23 (see Annex 3)
	6	Broad-scale Habitats map: A1.3 Low Energy Intertidal Rock and A2.2 Intertidal Sand/Muddy Sand removed (see Annex 4)
	7	Habitats and Species FOCI map: boundary amended to reflect correct boundary of rRA 23 (see Annex 5)
	14	Table in Section 15, Conservation Objectives: Draft CO for A1.1 High Energy Intertidal Rock has been assessed as "Maintain" A1.3 Low Energy Intertidal Rock and A2.2 Intertidal Sand/Muddy Sand removed from table (see comment above)
rMCZ 5 Thames	11	Table in Section 14. Written comments provided by the ports sector representative (PLA) at the August 2011 meeting of the RSG 2011 (RSG11) were omitted and are as follows:  <i>The PLA do not support this rMCZ. Implications to stakeholders need changing as per comments in meeting. Dredging occurs up to Pitsea due to navigable issues</i>

Site	Page	Amendment
	13	Draft CO for Tentacled Lagoon worm changed from Recover to Maintain as further information from the PLA suggest no overlap of dredging with the feature and very low use of the commercial anchorage over the feature.
rMCZ 6 Medway	10	Table in Section 14. Ports sector: Written comments provided by the ports sector representative (PLA) at the August 2011 meeting of the RSG 2011 (RSG11) were omitted and are as follows:  <i>This area is a port area. Activities and dredging must be taken into account</i>
rMCZ 11.1 Dover to Deal	12	Section 14 Stakeholder Support for Site: Comments from SeaSearch (Marine Ecology) were omitted and are as follows:  <i>Strong support for this area as a no-trawl area over chalk reef and sediment with intermittent chalk, Sabellaria and mussels. Would prefer site to extend out to 5km but this was opposed by fishing interests. Must be clear maintain objective is on the basis of no trawling occurring.</i>
rMCZ 11.2 Dover to Folkestone	10	Habitat and Species FOCI Map. Legend: Long-snouted seahorse replaced with Short snouted seahorse (Annex 6)
	14	Section 14 Stakeholder Support for Site: Comments from SeaSearch (Marine Ecology) were omitted and are as follows:  <i>Strongly support this site and the agreement that no trawling should occur, thus protecting Sabellaria (of both species) and hard rock outcrops, unusual in the region.</i>
	16	Conservation Objectives: Blue Mussel beds (Recover) – activity exerting pressure was missing and is “Fishing – benthic trawling (bottom gear)”
	17	Conservation Objectives: Littoral Chalk Communities (Recover) – activity exerting pressure was missing and is “Fishing – benthic trawling (bottom gear)”
rMCZ 13.1 Beachy Head East	1	Table 5. A1.2 Moderate Energy Intertidal Rock removed as fully protected in existing sites
	7	Broad scale habitat map: A1.2 Moderate Energy Intertidal Rock removed from map and legend as protected in existing sites (Annex 7)
	14	Section 14. Stakeholder Support. Kent and Essex IFCA should be <b>Sussex</b> IFCA
	16 & 17	Table in Section 15, Conservation Objectives:  Draft COs for A5.2 Subtidal Sand, and A5.4 Subtidal Mixed Sediments revised to “Recover” following assessment of associated REC A1.2 Moderate Energy Intertidal Rock removed as fully protected in existing sites
rMCZ 13.2 Beachy Head	11	Section 14, Stakeholder Support for Site. Entire table (which is for rMCZ 14) replaced with correct table in Annex 2
	12	Table in Section 15, Conservation Objectives:

Site	Page	Amendment
West		Draft COs for A5.2 Subtidal Sand, and A5.4 Subtidal Mixed Sediments confirmed as “Maintain” following assessment of associated REC habitats
rMCZ 14 Offshore Brighton	9	Section 14 Stakeholder Support for Site: Comments from SeaSearch (Marine Ecology) were omitted and are as follows:  <i>Strong support for this site. It represents a compromise position to allow French fishing industry to continue below and needs to be designed with recognition of the extent of rock with a sediment veneer which I suggest should be managed as for rock habitats.</i>
rMCZ 16 Kingmere	15	Table in Section 15, Conservation Objectives: Draft COs for A5.4 Subtidal mixed sediments and A3.94 ME Infralittoral Rock confirmed to be “Recover” following assessment of associated REC habitats Subtidal Chalk (Recover) – activity exerting pressure was missing and is “Fishing – benthic trawling (bottom gear)”
rMCZ 17 Offshore Overfalls	3	Section 9. 1st line: Depth of site is given as 1-35m but a stakeholder has reported that this is probably not correct and should be checked (project team cannot verify this)
	5	Second paragraph from bottom: delete “Tope ( <i>Galeorhinus galeus</i> )” which is not considered a primary angling target
	13	Table in Section 15: Subtidal sands and gravels: activity exerting pressure “Extraction of sand and gravel” removed as Conservation Objective is Maintain
	15	Section 17. Implications for stakeholders. Second bullet point: text concerning Overfalls Group Voluntary Code of Conduct - wording “provided guidelines prepared by National Federation of Sea Anglers are followed” be replaced by “minimum catch sizes to apply for all fish species in line with the minimum sizes advised by Angling Trust or Sussex ICFA, whichever is the greater”
rMCZ 19 Norris to Ryde	3	Section 9 Detailed Site Description: second paragraph: Correct seaward limit of seagrass is <b>2m</b> depth (not 4m)
	11 & 12	Table in Section 15, Conservation Objectives: <ul style="list-style-type: none"> <li>• Draft CO for A5.3 Subtidal Mud has been assessed to be “Maintain” in relation to fisheries activities</li> <li>• Seagrass: statement in final column that seagrass beds “can extend to 4m below chart datum” is incorrect – 2m below chart datum is the limit.</li> </ul>
rMCZ 22 Bembridge	6	Section 9. The first version of the Site Assessment Document for this rMCZ included a map of Black Bream nesting site distribution (circulated only to SAP, NE, JNCC, RSG and LGs and never posted on the web); the Black Bream map has been removed for data confidentiality reasons
	10	Habitat and Species FOCl map: sea grass distribution was missing from the map and has been added (Annex 8)
	16	Table within Section 15, Conservation Objectives: revised for the following features: <ul style="list-style-type: none"> <li>• A5.3 Subtidal Mud, Mud habitats in deep water, and Seapens and burrowing megafauna – changed from</li> </ul>

Site	Page	Amendment
		“Maintain” to “Recover” due to information showing St Helens Roads anchorage covers a larger area than shown by original project data <ul style="list-style-type: none"> <li>• <i>Sabellaria</i> (Recover) – activity exerting pressure changed from commercial shipping anchoring (the nearest anchorage is the Nab anchorage and there is no overlap with this) to tourism and recreation</li> </ul>
rMCZ 23 Yarmouth to Cowes	4	Section 9, 3 <sup>rd</sup> paragraph reworded – see bold text as follows:  <i>The westernmost record of peat and clay was originally mapped incorrectly within the Western Yar Estuary, leading the RSG to include the estuary in the site. <b>The Isle of Wight Estuaries Project requested evidence of the information mapped because the Harbour Commissioners, the Estuaries Project, the County Ecologist and County Archaeologists had no records of it in that location. The data record was investigated, correctly located in its current position to the west of the harbour entrance and the estuary was removed from the site. Since then further information has arisen and, in her database of nearshore and offshore peat deposits, Hazell (2008) documents there are notable peat deposits in the Western Yar but these records are not held by the project.</b></i> ”
	14	Table in Section 15, Conservation Objectives: Draft CO for A2.1 Intertidal Coarse Sediment has been assessed to be “Maintain”
	14& 15	Stakeholders consider that information given in the table within Section 15 does not accurately reflect the information provided to the project about on-going activities. In particular: <ul style="list-style-type: none"> <li>• Seagrass: there is extensive mooring and anchoring in sea grass areas to the west and east of Yarmouth Harbour</li> <li>• Oyster dredging: this occurs from Fort Victoria – Cowes, including through the mooring trots during periods of spring tides, including east of the pier off RSYC from November – March.</li> <li>• Trawling and potting occur in most areas throughout the rMCZ.</li> <li>• Sea angling takes place to the east of Yarmouth Harbour in small boats, on Yarmouth pier and shore, mainly outside the seagrass bed area.</li> </ul>
rMCZ 25.1 Pagham Harbour	3	Sections 8 and 9: Description of location of Defolin’s Snail (... this species was found in 2007 in the upper shore shingle on the westernmost part of the spit, above MHW) reworded to omit reference to <b>westernmost</b> part of the spit (which is incorrect) as follows:  “... this species was found in 2007 in the upper shore shingle on the spit, above MHW .....”
	7	Section 12. Initial draft referred to Pagham Harbour Local Nature Reserve; subsequently corrected to Pagham Harbour <b>National</b> Nature Reserve

Site	Page	Amendment
rMCZ 25.2 Selsey Bill and the Hounds	16	Table within Section 15, Conservation Objectives: assessed for the following features as: <ul style="list-style-type: none"> <li>• A3.1 High Energy Infralittoral RockSubtidal: Maintain</li> <li>• A5.2 Subtidal Sand: Maintain</li> <li>• A5.4 Subtidal Mixed Sediments: Maintain</li> </ul>
rMCZ 26 Hythe Bay	9	Section 14 Stakeholder Support for Site: Comments from SeaSearch (Marine Ecology) were omitted and are as follows: <i>Strongly support this site for its very high diversity and unusual community. The small blocks for no-trawling within the site represent a significant compromise from the proposed larger area. Attempts to find slightly larger more viable areas were rejected by fishing interests.</i>
rMCZ 29 East Meridian	10	Section 14 Stakeholder Support for Site: Comments from SeaSearch (Marine Ecology) were omitted and are as follows: <i>Strongly support the designation of the whole site to cover a greater diversity of habitats. It already represents a compromise from original SEEBF proposal, now being in the shipping channel to minimise impact to fisheries and improve safety considerations.</i>
	11	Table within Section 15, Conservation Objectives: <ul style="list-style-type: none"> <li>• Draft CO for Subtidal Sand and Gravel has been assessed to be “Recover”</li> <li>• English Channel Outburst Flood geological feature: deleted as this feature is not yet proposed for protection (see Section 6).</li> </ul>
rMCZ 29.2 East Meridian eastern side	10	Section 14 Stakeholder Support for Site: Comments from Sea Search (Marine Ecology) were omitted and are as follows: <i>Strongly support the designation of the whole site to cover a greater diversity of habitats. It already represents a compromise from original SEEBF proposal, now being in the shipping channel to minimise impact to fisheries and improve safety considerations.</i>
	11	Table within Section 15, Conservation Objectives: <ul style="list-style-type: none"> <li>• Draft CO for Subtidal Sand and Gravel has been assessed by Natural England to be “Recover”</li> <li>• English Channel Outburst Flood geological feature: delete as this feature is not yet proposed for protection (see Section 6).</li> </ul>
rMCZ 30 Kentish Knock	8	Table within Section 15, Conservation Objectives: <ul style="list-style-type: none"> <li>• Draft COs for A5.1 Subtidal coarse sediment and A5.2 Subtidal Sand confirmed as “Recover”</li> <li>• Draft CO for A5.4. has been assessed as “Recover”</li> </ul>
<b>Recommended Reference Areas</b>		
Applies to all rRA		Tables 5 and 6 – features for protection and features “not” for protection: the features listed in Table 6 occur within the rRA but were not the primary reason for recommending this site. However, since they lie within the site, by definition,

Site	Page	Amendment
descriptions		they have a Conservation Objective of “Recover” and would be protected if the site is designated
rRA 1 Colne Point	3	Section 10, Site Boundary: the site boundary is not “500m x 500m” but is approximately 1 km x 1 km
rRA3 Holehaven Creek	1	Section 10. Clarification: The proposed boundary of this RA, at the mouth of Holehaven Creek, is intentionally further north than the boundary of Holehaven Creek SSSI because of the large number of on-going activities in this area (e.g. jetties, power station etc)
	3	Table in Section 14. Ports sector comments to be replaced with the following, as provided by the ports sector representative (PLA) at the August meeting of the RSG 2011 (RSG11):  <i>The PLA strongly objects to this ref.area. Maintenance dredging occurs in this area and is carried out regularly!! Do not support! Evidence to support! And will be provided to Balanced Seas and Natural England</i>
rRA7 South Foreland Lighthouse	3	Table in Section 14. Ports sector: Written comments provided by the ports sector representative (PLA) at the August meeting of the RSG 2011 (RSG11) were omitted from the table and are as follows:  <i>Not to be moved southwest towards port limit to stay at least 2 km away due to port operations</i>
rRA 11 Church Norton Spit	1	Section 5. Broad-scale Habitat A2.3 Intertidal mud removed as this does not occur within the proposed boundary  Sections 8: Description of location of Defolin’s Snail (... this species was found in 2007 in the upper shore shingle on the <b>westernmost</b> part of the spit, above MHW) reworded to omit reference to westernmost part of the spit (which is incorrect) as follows:  “... this species was found in 2007 in the upper shore shingle on the spit, above MHW .....”
	3	Section 12. Initial draft referred to Pagham Harbour Local Nature Reserve; subsequently corrected to Pagham Harbour <b>National</b> Nature Reserve
rRA15 Tyne Ledges	1	Section 3, Site surface area. Revised 0.27 km <sup>2</sup> to 0.05 km <sup>2</sup> as a result of boundary revisions described below
	2	Section 10. Map showing site boundary: Boundary revised as shown in Annex 9. South boundary remains in line with Swains Road; northern boundary lies 5 metres south of Colonel’s Hard. The landward boundary is the base of the shingle and the seaward boundary is the top of the outer ledge, a width of circa 100 metres.
rRA 18 St	2	Section 9. Detailed Site Description: remove <i>Chthamalus montagui</i> as this barnacle species occurs only in the intertidal; note that the landward boundary of this rRA is 150 m from shore

Site	Page	Amendment
Catherine's Point West	4 & 5	Section 14 Stakeholder Support for Site: Comments from SeaSearch (Marine Ecology) were omitted and are as follows: <i>Strongly support this RA for circalittoral rock, though it should be larger to fulfil the ENG: this therefore represents a compromise position due to opposition from fishing and angling interests. From an ecological point of view I suggest the area should go to high water.</i>
rRA 19 Newtown Harbour	2	Section 10. Site Boundary. Clarification. The boundaries as proposed by the National Trust in collaboration with the angling sector, and shown in Fig 1, are those that have gone forward in the final recommendation. There are some small discrepancies between the map in Fig 1 and the map on page 3, produced by the project in the format requested by Defra, but this is due primarily to differences in projection. The boundaries as proposed omit some of the features, such as oysters, for which the reference area has been proposed but the National Trust is confident that further survey work would be likely to reveal the presence of these features within the rRA, even though current Balanced Seas records do not show this (phone call with Tony Tutton, National Trust, 11 Nov 2011)
rRA20 Stalked Jellyfish	1	Clarification: as explained in the Site Assessment Document, the RSG felt that they could not recommend a boundary for this rRA, as there is uncertainty about the validity of the single record for the feature (a stalked jellyfish) for which this rRA is proposed. As this is the only record of this species in the Balanced Seas project area, it was felt appropriate to draw attention to its potential suitability as a reference area. If the species is confirmed in this area, a boundary could be determined in consultation with the many stakeholders that have an interest in this location. As there is no boundary, it has not been possible to calculate the area of the site.
rRA 21 Culver Spit	2	Version submitted to SAP did not show the maerl feature on the map, but this was corrected immediately and re-circulated.
rRA 22 North Mistley	3	Map. Bottom left Legend: replace "Sheltered Muddy Gravels" with "Blue Mussel Beds (Intertidal and Subtidal)"
rRA24 Harwich Haven	2	Section 10, Site Boundary: the site boundary is not 500m x 500m but approximately 1 km x 1 km



## Annex 1. Revised Draft Conservation Objectives

Site	Feature	CO	Pressure Concerned	Activity	Comments	Detailed Comments
3	A1.1 High Energy Intertidal Rock	Maintain			Included late in the process	
	A1.3 Low Energy Intertidal Rock	ALREADY PROTECTED			Included late in the process	
5	Tentacled Lagoon Worm	Maintain				Confirmed by NE following meeting with PLA and confirmation on no exposure to navigational dredging and very low level use of the anchorage.
11.2	Short snouted Seahorse	Maintain				
13.1	A5.2 Subtidal Sand	Recover	Physical change (to another seabed type) Siltation rate changes (high) Siltation rate changes (low)	Waste disposal - navigational dredging (capital, maintenance)	SNCB National Review comment: More details needed from EA, NE currently investigating with EA and MMO <b>THIS FEATURE IS NOT PROPOSED FOR PROTECTION</b>	This is the back-translation of the REC data as carried out by the JNCC. It also represents the modelled UK SeaMap data/MESH. This BSH is NOT the feature that stakeholders wish to protect. The feature for protection is the mosaic of rock habitats including outcroppings that stakeholders know to exist there but for which we do not have spatial data other than the REC study. This habitat has had to be included as targets were calculated on this basis with the knowledge that there will be small areas of exposed rock incorporated.
	A5.4 Subtidal mixed sediments	Recover	Physical change (to another seabed type) Siltation rate changes (high)	Waste disposal - navigational dredging (capital, maintenance)	SNCB National Review comment: More details needed from EA, NE currently investigating with EA and MMO <b>THIS FEATURE IS NOT PROPOSED FOR PROTECTION</b>	
	Low Energy Infralittoral Rock (A3.A2 and A3.A4)	Recover	Physical change (to another seabed type) Siltation rate changes (high)	Waste disposal - navigational dredging (capital, maintenance)	Determined at national sense check 5/10/11 using the REC data. NE currently investigating with EA and MMO	
	Moderate Energy Infralittoral Rock (A3.92, A3.94, A4.92)	Recover	Physical change (to another seabed type) Siltation rate changes (high)	Waste disposal - navigational dredging (capital, maintenance)	Determined at national sense check 5/10/11 using the REC data. NE currently investigating with EA and MMO	

Site	Feature	CO	Pressure Concerned	Activity	Comments	Detailed Comments
	LE Circalittoral Rock (A4.A4)	Recover	Physical change (to another seabed type) Siltation rate changes (high)	Waste disposal - navigational dredging (capital, maintenance)	Determined at national sense check 5/10/11 using the REC data. NE currently investigating with EA and MMO	
	ME Circalittoral Rock (A4.94)	Recover	Physical change (to another seabed type) Siltation rate changes (high)	Waste disposal - navigational dredging (capital, maintenance)	Determined at national sense check 5/10/11 using the REC data. NE currently investigating with EA and MMO	
13.2	A5.2 Subtidal Sand	Maintain				
	A5.4 Subtidal mixed sediments	Maintain				
	A5.3 Subtidal Mud	Maintain				
	LE Infralittoral Rock (A3.A2 and A3.A4)	Maintain			Determined at national sense check 5/10/11 using the REC data	
	ME Infralittoral Rock (A3.94)	Maintain			Determined at national sense check 5/10/11 using the REC data	
16	A5.4 Subtidal mixed sediments (A5.43 in REC data)	Recover		Fishing - benthic trawling (bottom gear or trawls)	<b>THIS FEATURE IS NOT PROPOSED FOR PROTECTION</b>	This is the back-translation of the REC data as carried out by the JNCC. It also represents the modelled UK SeaMap data/MESH. This BSH is NOT the feature that stakeholders wish to protect. The feature for protection is the mosaic of rock habitats that stakeholders know to exist there but for which we do not have spatial data other than the REC study. This habitat has had to be included as targets were calculated on this basis with the knowledge that there will be small areas of exposed rock incorporated.
			Surface abrasion: damage to seabed surface features	Fishing - potting/creeling	<b>THIS FEATURE IS NOT PROPOSED FOR PROTECTION</b>	
			Surface abrasion: damage to seabed surface features	Fishing - set netting	<b>THIS FEATURE IS NOT PROPOSED FOR PROTECTION</b>	

Site	Feature	CO	Pressure Concerned	Activity	Comments	Detailed Comments
	ME Infralittoral Rock (A3.94)	Recover	Surface abrasion: damage to seabed surface features	Fishing - set netting	Determined at national sense check 5/10/11 using the REC data	
				Fishing - benthic trawling (bottom gear or trawls)	Determined at national sense check 5/10/11 using the REC data	
			Surface abrasion: damage to seabed surface features	Fishing - potting/creeling	Determined at national sense check 5/10/11 using the REC data	
	Subtidal Chalk	Recover	Structural abrasion/penetration: Structural damage to seabed >25mm	Fishing - benthic trawling (bottom gear or trawls)		Activity restriction included
17	Subtidal Sand and Gravels	Maintain				Activity of extraction - sand and gravel removed as maintain objective
19	A 5.3 Subtidal Mud	Maintain			This is a change introduced after national sense check 5/10/11 with Sarah Wiggins. It was decided that levels of activity as the IFCA suggested should be applied and monitored. This has happened elsewhere in the region.	
22	A 5.3 Subtidal Mud	Recover	Shallow abrasion/penetration: damage to seabed surface and penetration $\leq 25$ mm	Shipping	This is now a recover due to the extent of St Helens Anchorage only being realised in the last RSG meeting	
	Seapens and burrowing megafauna	Recover	Shallow abrasion/penetration: damage to seabed surface and penetration $\leq 25$ mm	Shipping	This is now a recover due to the extent of St Helens Anchorage only being realised in the last RSG meeting	

Site	Feature	CO	Pressure Concerned	Activity	Comments	Detailed Comments
	Mud habitats in deep water		Shallow abrasion/penetration: damage to seabed surface and penetration $\leq 25\text{mm}$	Shipping	This is now a recover due to the extent of St Helens Anchorage only being realised in the last RSG meeting	
	Rossworm ( <i>Sabelaria spinulosa</i> ) reef	Recover	Shallow abrasion/penetration: damage to seabed surface and penetration $\leq 25\text{mm}$	Tourism and recreation	Shipping (commercial anchorage) removed as an activity exerting pressure	Commercial Anchorage does not overlap with the feature
23	A2.1	Maintain			Included late in the process	
25.2	A3.1	Maintain				
	A5.2 Subtidal Sand	Maintain				
	A5.4 Subtidal mixed sediments	Maintain				
	ME infralittoral rock (A3.92 and A3.94)	Maintain			Determined at national sense check 5/10/11 using the REC data	
	LE Infralittoral Rock (A3.A2 and A3.A4)	Maintain			Determined at national sense check 5/10/11 using the REC data	
29	Subtidal Sand and Gravel	Recover	Removal of non-target species (lethal)	Benthic Trawling	very low effort UK Scottish seining, low mech dredging, v.low otter trawling & very high EU demersal (< 2150 hrs) & beam (<1040 hrs) occurring over & around the feature. The effort is high & widespread, recommend high exposure	

Site	Feature	CO	Pressure Concerned	Activity	Comments	Detailed Comments
			Shallow abrasion/penetration: damage to seabed surface and penetration $\leq 25\text{mm}$	Benthic Trawling	very low effort UK Scottish seining, low mech dredging, v.low otter trawling & very high EU demersal (< 2150 hrs) & beam (<1040 hrs) occurring over & around the feature. The effort is high & widespread, recommend high exposure	
			Surface abrasion: damage to seabed surface features	Benthic Trawling	very low effort UK Scottish seining, low mech dredging, v.low otter trawling & very high EU demersal (< 2150 hrs) & beam (<1040 hrs) occurring over & around the feature. The effort is high & widespread, recommend high exposure	
29.2	Subtidal Sand and Gravel	Recover	Removal of non-target species (lethal)	Benthic Trawling	very low effort UK Scottish seining, low mech dredging, v.low otter trawling & very high EU demersal (< 2150 hrs) & beam (<1040 hrs) occurring over & around the feature. The effort is high & widespread, recommend high exposure	
			Shallow abrasion/penetration: damage to seabed surface and penetration $\leq 25\text{mm}$	Benthic Trawling	very low effort UK Scottish seining, low mech dredging, v.low otter trawling & very high EU demersal (< 2150 hrs) & beam (<1040 hrs) occurring over & around the feature. The effort is high & widespread, recommend high exposure	

Site	Feature	CO	Pressure Concerned	Activity	Comments	Detailed Comments
			Surface abrasion: damage to seabed surface features	Benthic Trawling	very low effort UK Scottish seining, low mech dredging, v.low otter trawling & very high EU demersal (< 2150 hrs) & beam (<1040 hrs) occurring over & around the feature. The effort is high & widespread, recommend high exposure	
30	A5.1 Subtidal coarse sediment	Recover	Removal of non- target species (lethal) Shallow abrasion/penetration: damage to seabed surface and penetration ≤25mm Surface abrasion: damage to seabed surface features	Fishing - benthic trawling (bottom gear or trawls)	ASSESSED USING NEW BOUNDARIES	
	A5.2 Subtidal Sand	Recover	Removal of non- target species (lethal) Shallow abrasion/penetration: damage to seabed surface and penetration ≤25mm Surface abrasion: damage to seabed surface features	Fishing - benthic trawling (bottom gear or trawls)	ASSESSED USING NEW BOUNDARIES	

Site	Feature	CO	Pressure Concerned	Activity	Comments	Detailed Comments
	A5.4 Subtidal mixed sediment	Recover	Removal of non-target species (lethal) Shallow abrasion/penetration: damage to seabed surface and penetration $\leq 25$ mm Surface abrasion: damage to seabed surface features	Fishing - benthic trawling (bottom gear or trawls)	ASSESSED USING NEW BOUNDARIES	

## Annex 2

### rMCZ 13.2 Beachy Head West

#### Revised Section 14 Stakeholder Support

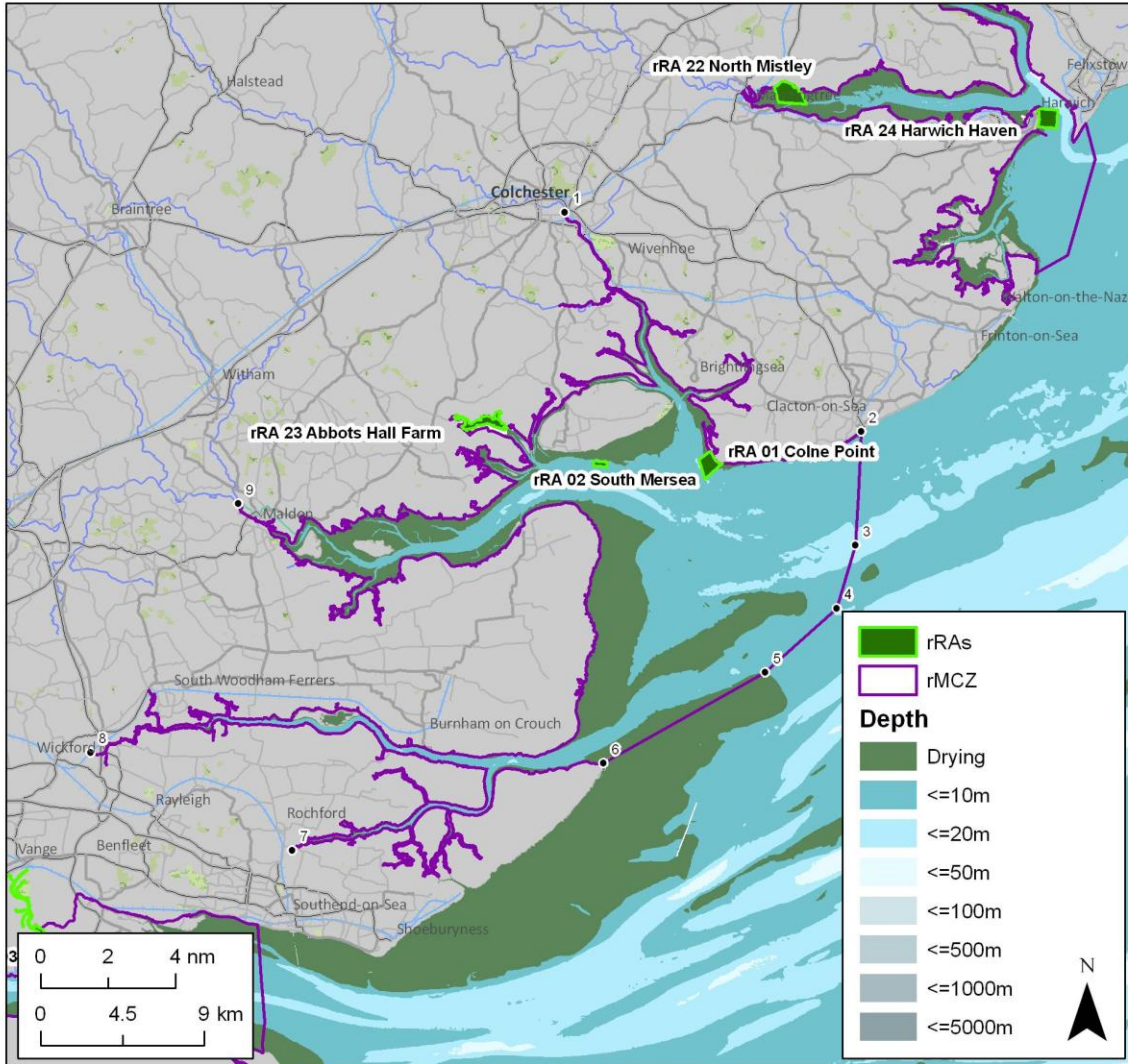
SECTOR	ORGANISATION	COMMENT for Beachy Head West rMCZ 13.2
Yachting	RYA	Need to review recover CO for littoral chalk; and check Brighton Marina spoil dump.
Kite Surfing	British Kite Surfing Association	Supported.
Sea Angling		RSA support maintain for littoral chalk and suggest voluntary agreement and moving the boundary away from Birling Gap.
	Local Fisheries Representatives	Moderate support.
Fishing - FPO, beam trawling		Good local support if boundary is concurrent with existing IFCA byelaw (any extension would remove all support).
Birds	RSPB	Support site but would have preferred boundary to follow Seven Sisters Voluntary Marine Conservation Area as this would protect feature better.
Wildlife Trusts	Hampshire Wildlife Trust	I support this site but believe the seaward boundary should be extended 2nm from the shore rather than aligned with existing byelaw.
Marine Ecology	Seasearch	Strongly support this area for inclusion, but this adds no further restriction on fishing activity and is a compromise from the SEEBF proposal which aligned with the existing VMCA. It is very disappointing this hasn't been included in the network.
Marine Wildlife	Marine Conservation Society	Support site. Recover all broadscale habitats from bottom trawling
	Environment Agency	Broadly support.
IFCA	Kent & Essex IFCA	
Heritage and Archaeology	English Heritage	Support but: potential for archaeology and investigation of peat, investigation will need to be allowed.



Annex 3

Blackwater, Crouch, Roach & Colne Estuaries rMCZ no 3  
Site Map

Version: 1.0  
Date: Aug 2011



Boundary coordinates

ID	Degrees Minutes Seconds		Degrees Decimal Minutes	
	Latitude	Longitude	Latitude	Longitude
1	N51° 53' 28.399"	E0° 54' 53.530"	N51° 53.473'	E0° 54.892'
2	N51° 47' 13.365"	E1° 9' 19.515"	N51° 47.223'	E1° 9.325'
3	N51° 43' 51.158"	E1° 9' 10.681"	N51° 43.853'	E1° 9.178'
4	N51° 41' 58.156"	E1° 8' 22.025"	N51° 41.969'	E1° 8.367'
5	N51° 40' 1.285"	E1° 5' 3.186"	N51° 40.021'	E1° 5.053'
6	N51° 37' 12.347"	E0° 57' 28.498"	N51° 37.206'	E0° 57.475'
7	N51° 34' 21.385"	E0° 42' 49.022"	N51° 34.356'	E0° 42.817'
8	N51° 37' 3.544"	E0° 33' 5.593"	N51° 37.059'	E0° 33.093'
9	N51° 44' 33.722"	E0° 39' 43.511"	N51° 44.562'	E0° 39.725'



Map and coordinates displayed in WGS84, UTM Zone 31 North.

©OpenStreetMap 2010. ©Ordnance Survey 2010. ©JNCC 2009. ©UK Hydrographic Office 2011 ©Crown Copyright 2009.  
NOT TO BE USED FOR NAVIGATION.

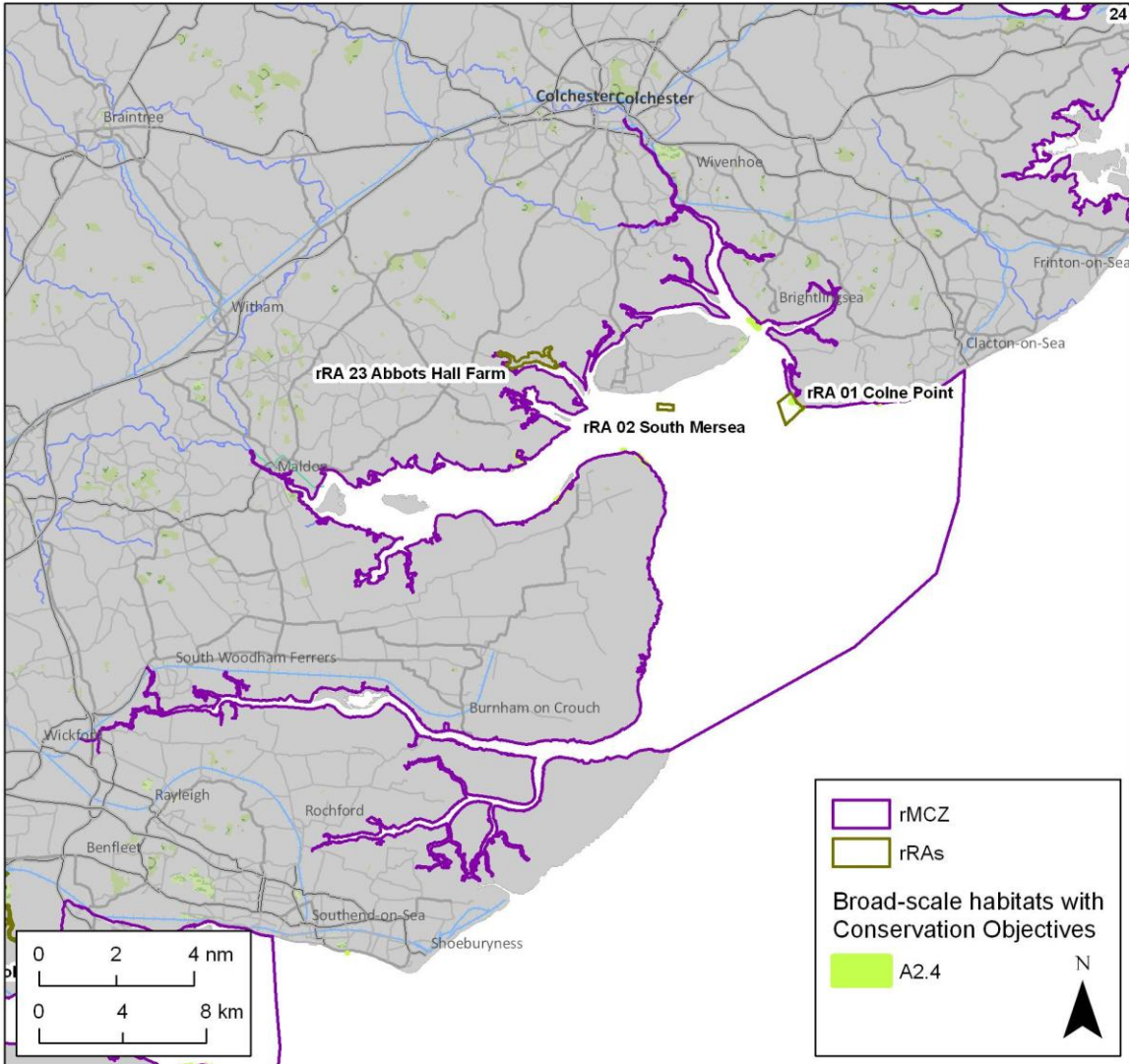
Annex 4

**Blackwater, Crouch, Roach & Colne Estuaries rMCZ no 3**

Broad-scale habitats (EUNIS Level 3) with Conservation Objectives

Version: 1.0

Date: Aug 2011



Broad-scale habitats with Conservation Objectives:  
- A2.4 intertidal mixed sediments

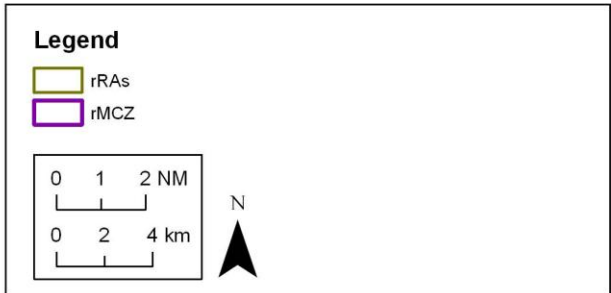
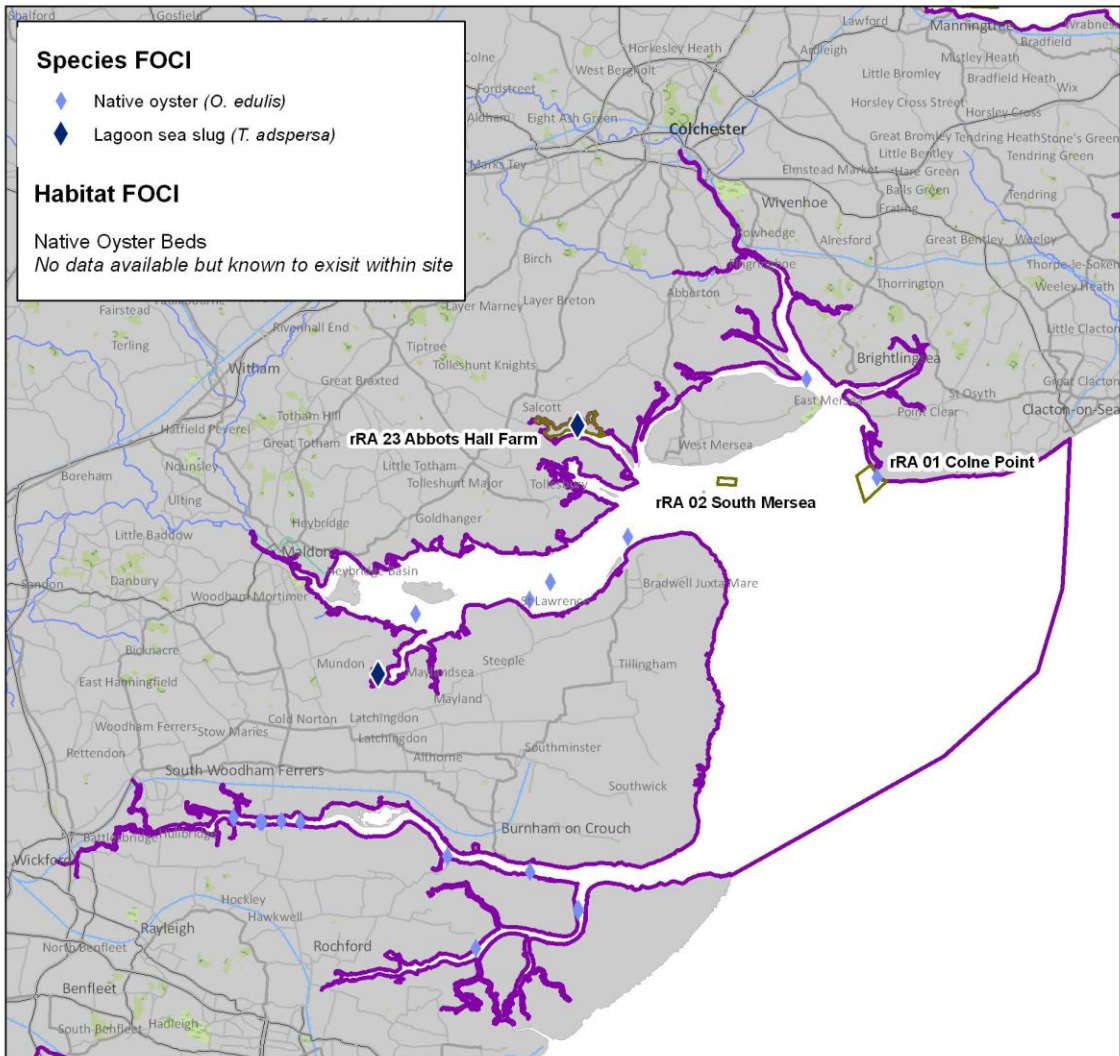


Map and coordinates displayed in WGS84, UTM Zone 31 North.  
©OpenStreetMap 2010. ©Ordnance Survey 2010. ©JNCC 2009. ©Crown Copyright 2009.  
NOT TO BE USED FOR NAVIGATION.



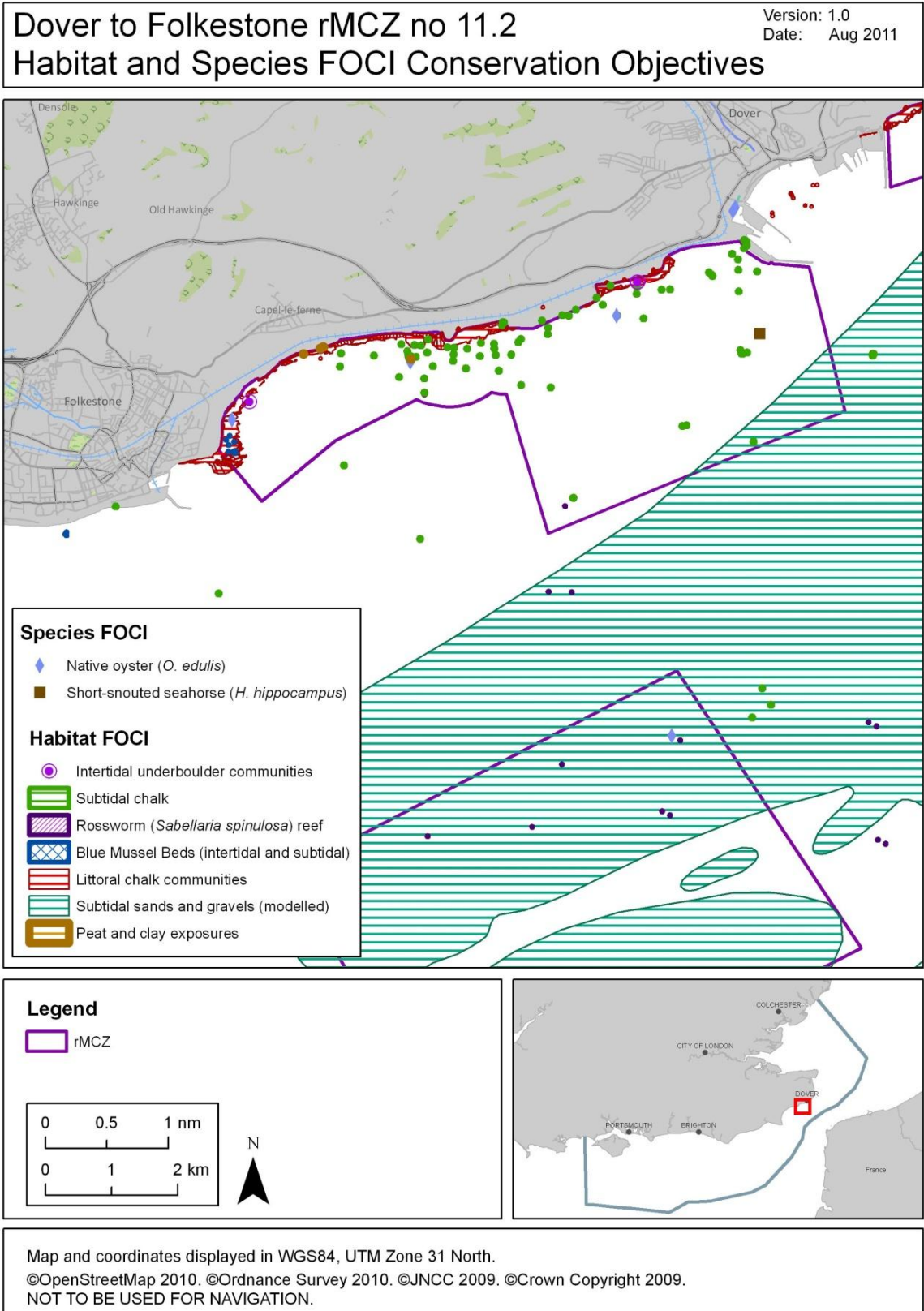
Annex 5

Blackwater, Crouch, Roach & Colne Estuaries rMCZ no 3  
Habitat and Species FOCI Conservation Objectives



Map and coordinates displayed in WGS84, UTM Zone 31 North.  
 ©OpenStreetMap 2010. ©Ordnance Survey 2010. ©JNCC 2009. ©Crown Copyright 2009.  
 NOT TO BE USED FOR NAVIGATION.

Annex 6

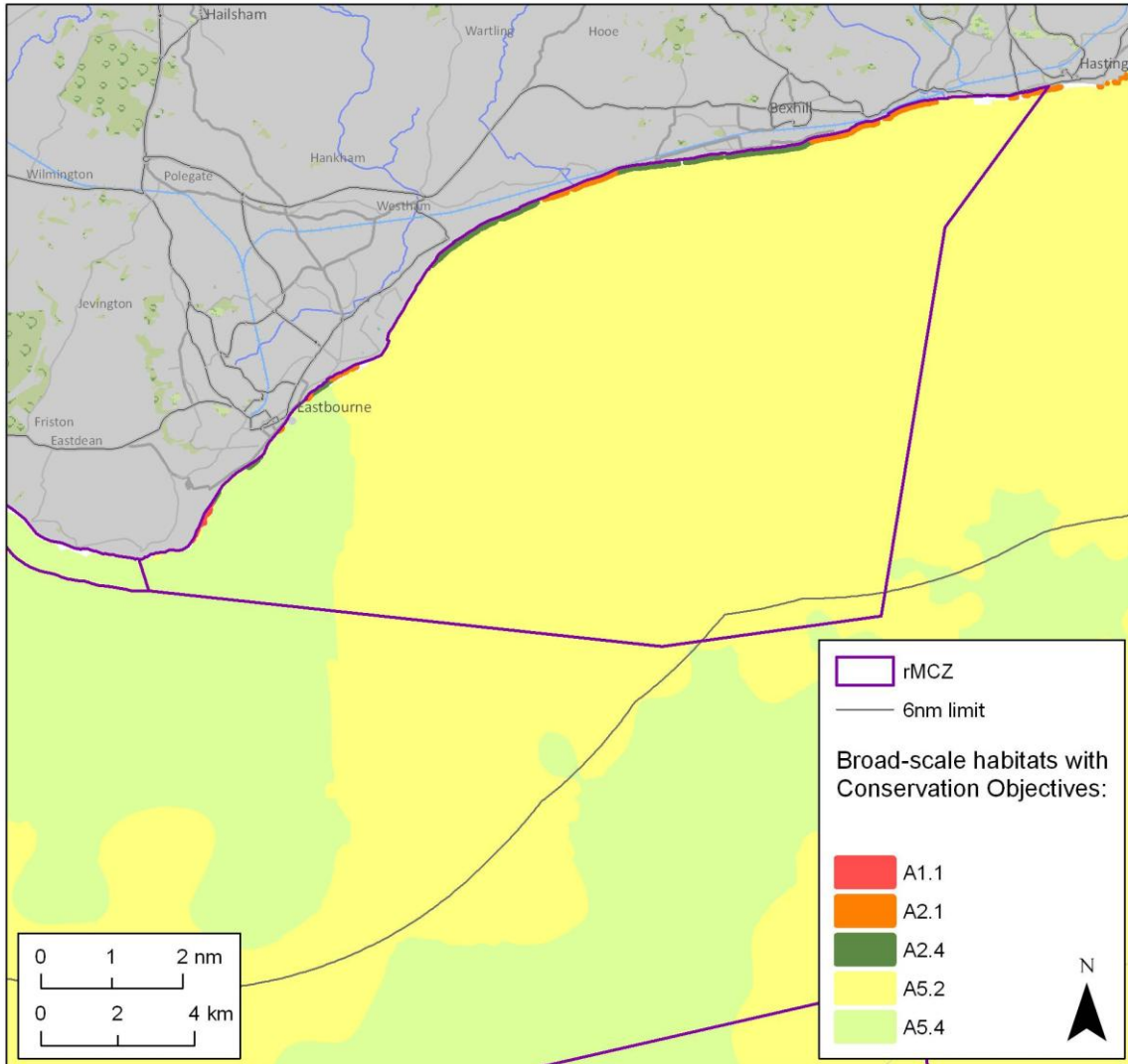


Annex 7

Beachy Head East rMCZ no 13.1

Version: 1.0  
Date: Aug 2011

Broad-scale habitats (EUNIS Level 3) with Conservation Objectives



Broad-scale habitats with Conservation Objectives:

- A1.1 high energy intertidal rock
- A2.1 intertidal coarse sediment
- A2.4 intertidal mixed sediments
- A5.2 *subtidal sands*\*
- A5.4 *subtidal mixed sediments*\*

\* Only certain areas of this habitat were selected by the RSG for protection. Please see the accompanying map of REC survey habitats for more detail.



Map and coordinates displayed in WGS84, UTM Zone 31 North.

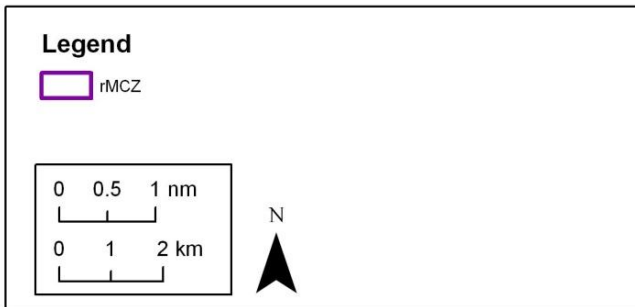
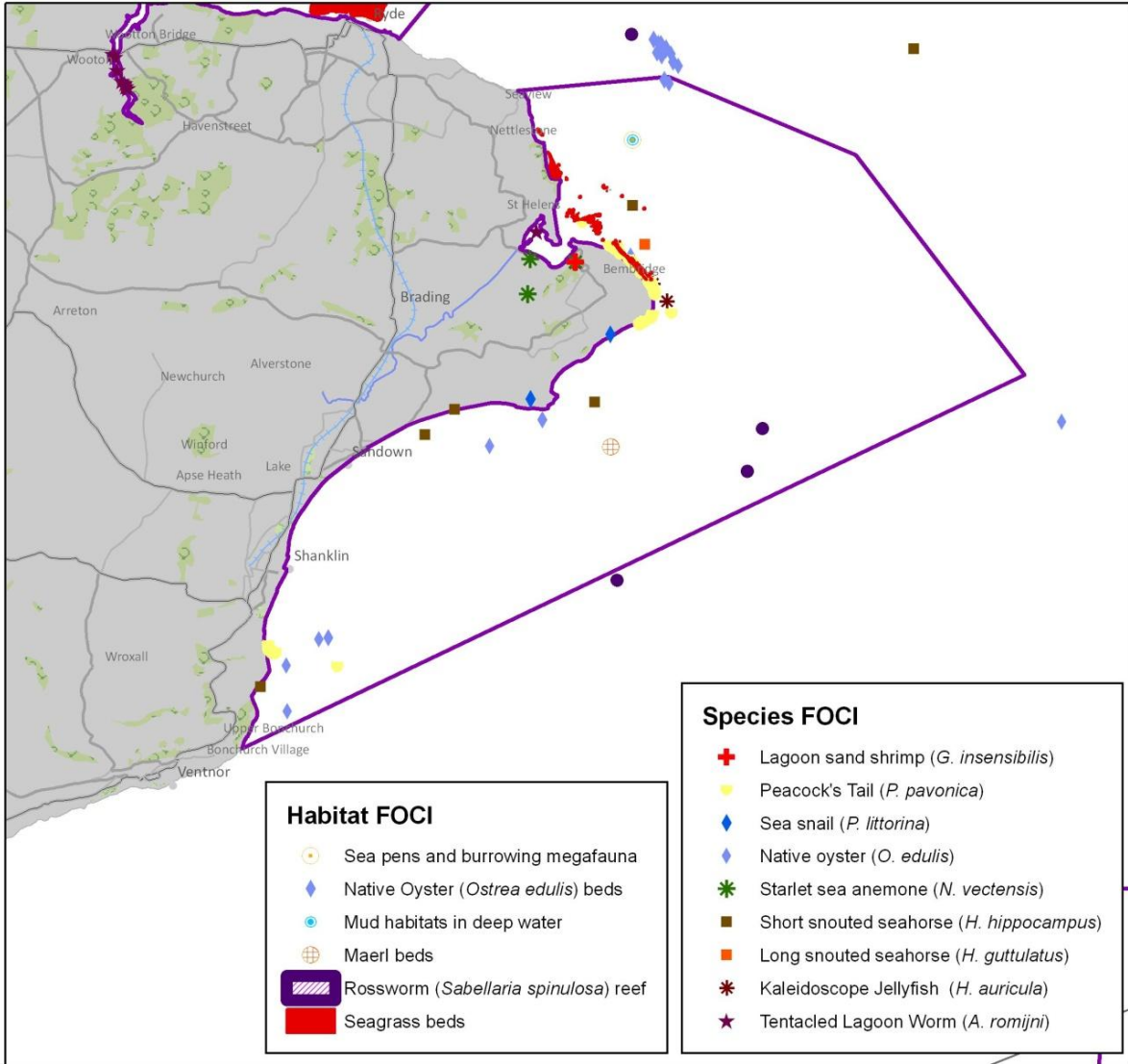
©OpenStreetMap 2010. ©Ordnance Survey 2010. ©JNCC 2009. ©Crown Copyright 2009.  
NOT TO BE USED FOR NAVIGATION.



Annex 8

Bembridge rMCZ no 22  
Habitat and Species FOCI Conservation Objectives

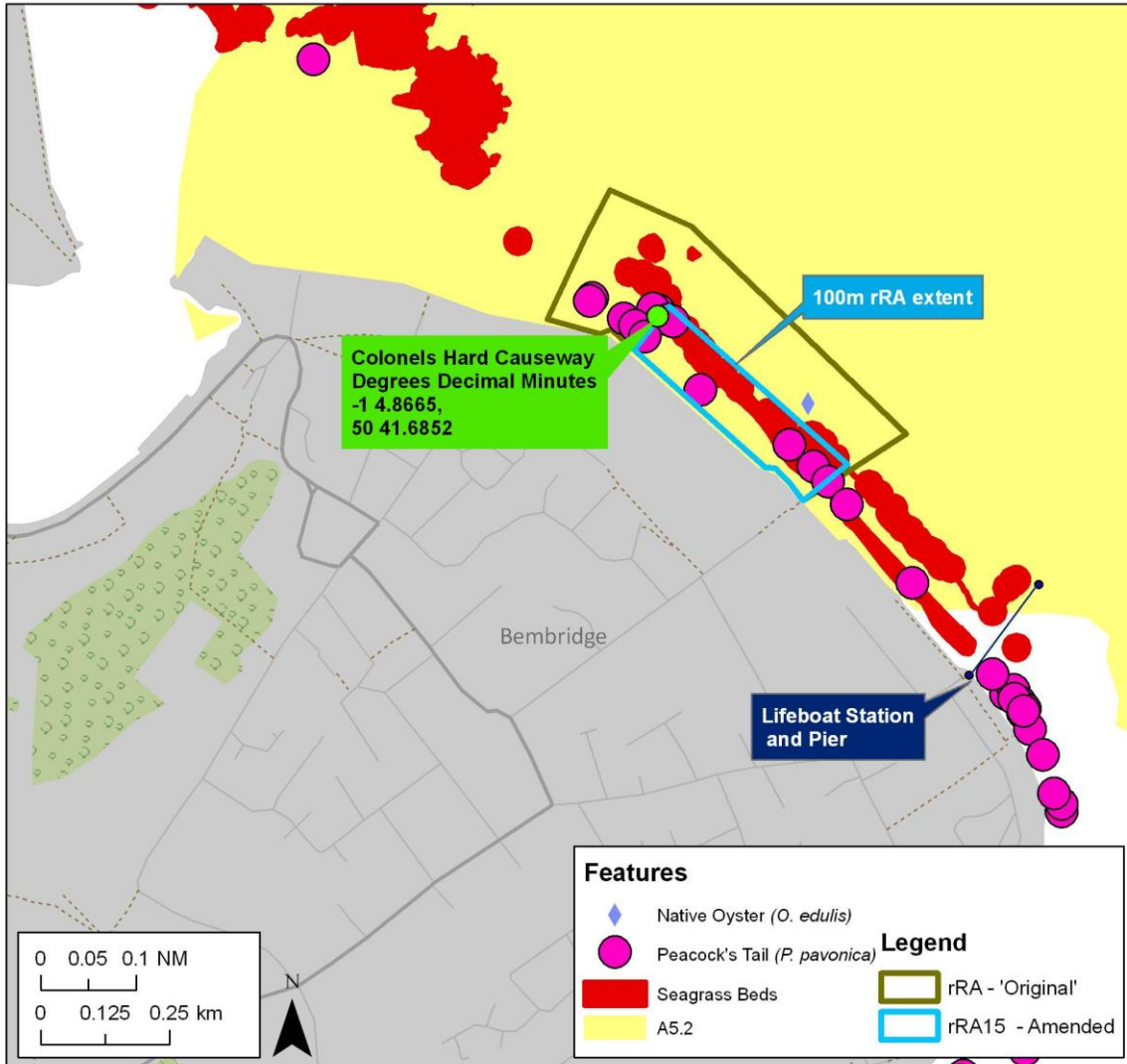
Version: 1.0  
Date: Aug 2011



Map and coordinates displayed in WGS84, UTM Zone 31 North.  
 ©OpenStreetMap 2010. ©Ordnance Survey 2010. ©JNCC 2009. ©Crown Copyright 2009.  
 NOT TO BE USED FOR NAVIGATION.

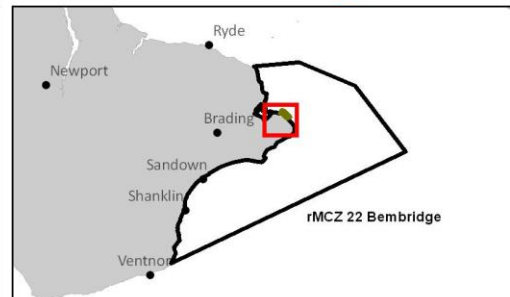
Annex 9

Tyne Ledges  
Recommended Reference Area no 15



Features to be protected within reference area:

- A5.2 Subtidal sand
- Seagrass beds
- Peacock's Tail (*P.pavonica*)
- Native Oyster (*O.edulis*)



This map and list show the main features selected by the RSG for inclusion within this Draft Reference Area. However, **ALL** features (including any additional) falling within this area would be given Reference Area protection.

Map and coordinates displayed in WGS84, UTM Zone 31 North.  
©OpenStreetMap 2010. ©Ordnance Survey 2010.  
©JNCC 2009. ©Crown Copyright 2009.  
NOT TO BE USED FOR NAVIGATION.